

July 4. 1958



LEAS PAVILION FOLKESTONE

FOR TWO WEEKS COMMENCING

Monday, 30th June, 1958

Nightly at 8 p.m.

Tea Matinees—Wednesday, Friday & Saturday at 3.45

THE

Arthur Brough Players

present

"NUDE WITH VIOLIN"

A NEW COMEDY BY NOEL COWARD

29th Season

845th Production



Programme

Threepence

FOUNDED 1830

Since when, noted for good quality
FURNITURE - FABRICS - CARPETS

Curtains and Loose Covers
made by skilled staff

If you have a furnishing problem
telephone us and our
representative will call

FLASHMAN

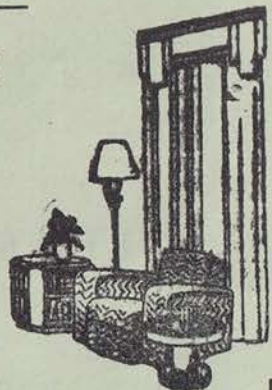
& Co., Ltd.

129 SANDGATE ROAD

FOLKESTONE

And at Dover

Telephone 2982



*Heating Installations
Oil Burning Equipment
Hot and Cold Water Systems*



M. W. LONGLEY Ltd.

*Contractors to Air Ministry, War Department, Ministry of Works
Regional Hospital Boards and K.C.C.*



**10 Cheriton Gardens
Folkestone**
Telephone 57101/2

JOHN LUKEY & Sons, Ltd.

Established
1853

Wine and Spirit Merchants

FINE OLD GOLDEN SHERRY

19/- Per Bottle

101 SANDGATE ROAD, FOLKESTONE

also at DOVER and WALMER

Tel.: Folkestone 3169
(Two lines)

Jessie Brown

75 SANDGATE ROAD

FOLKESTONE

Specialists in
GOWNS
COATS
SUITS and
KNITWEAR

Tel 3678

JOHN STRICKLAND

for

**BREAD
and
CAKES**

FOLKESTONE

Telephone 1
SANDGATE ROAD 3613
BAKERY 7862

LEAS PAVILION

FOLKESTONE

Proprietors - - - The Leas Pavilion (Folkestone) Ltd.

Telephone 2466

Licensee and Manager : H. J. Horner

THE

Arthur Brough Players

present

“NUDE WITH VIOLIN”

A NEW COMEDY BY
NOEL COWARD

Characters in order of appearance:

Sebastien	PETER WALTER
Marie-Celeste	JOANNA CRAIG
Clinton Preminger, Junior	JULIAN HERINGTON
Isobel Sorodin	MARGARET FRY
Jane, her daughter	JENNIFER HALES
Colin, her son	BARRY WARREN
Pamela, Colin's wife	JEANETTE RAE
Jacob Friedland	MARTIN BRADLEY
Anya Pavlikov	CAROL RAYMONT
Cherry-May Waterton	PATRICIA PARRY
Fabrice	WILLIAM HEPPEL
Obadiah Lewellyn	PAUL BARKER
Lauderdale	CLIVE CHAPMAN

Produced by Julian Herington

Scenery designed and executed by R. F. Packham

SYNOPSIS OF SCENES

The action of the play takes place in Paul Sorodin's Studio in Paris.
The time is the present.

ACT 1

Afternoon.

ACT 2

Scene 1. A few hours later.

Scene 2. The following afternoon.

ACT 3

Scene 1. A few hours later.

Scene 2. The following morning.

Will Patrons please note that new Curtains or Records especially obtained for any play, can be purchased at a very reasonable price at the end of the week.

Stage Director	Paul Barker
Scenic Artist	R. F. Packham
Electrical Effects	D. Stokes
Stage Managers	{ Joanna Craig Sara Thomas

The undermentioned kindly loaned by :

Furniture—Bobby & Co., Ltd., Sandgate Road.

Lord & Fisher, Tontine Street.

T. H. Boughton, Bouverie Road West.

Crystal Chandelier and Wall Lustres—T. H. Boughton, Bouverie Road West.

Glass and China—Upton's, Sandgate Road.

Silverware—Ocle & Son, Sandgate Road.

Properties—Peter's Corner, Cheriton Place.

Parfits, Manor Road.

Modern Painting by Margaret Ballardie, Picture Restorer, London.

Phone Macaulay 1534.

Camera—Halksworth Wheeler, Ltd., Sandgate Road.

Ladies' Hairstyles by Constance Fermor, West Terrace.

Wigs by Wig Creations, 69 George Street, London, W.1.

Nylon Stockings by KAYSER

“Ollivier” Cigarettes by Benson & Hedges

Sound by Bishop Sound & Electrical Co., Ltd., 48 Monmouth Street, W.C.2.

NEXT PRODUCTION

(For Two Weeks, Evening Performances at 8 p.m.)

Enid Bagnold, already firmly established as a top ranking Novelist with such books as "National Velvet," has now achieved even greater success with her play "THE CHALK GARDEN," which is to be our next production. This play delighted audiences at the Haymarket Theatre for eighteen months, and before that had satisfied the even more critical New Yorkers for a long period.

Mrs. St. Maugham is faced with the dual problem of cultivating blossoms from her two sorts of hard soils—the upbringing of a fire-raising adolescent grandchild, and the growing of flowers on the Sussex Downs. To help her in this task she engages a Governess who, although she copes more than adequately with both assignments, brings with her an air of mystery. The solving of this mystery changes the lives of everyone in the household.

Miss Bagnold avoids any cheap sensationalism in telling her story. Instead she is careful to relate the particular to the general, which gives the play unusual and stimulating style.

Elizabeth Addyman will be playing the part of Mrs. St. Maugham, and others in the cast will be:—Patricia Parry, Carol Raymont, Jeanette Rae, Joanna Craig, Sara Thomas, Martin Bradley and Barry Warren. The production will be by Julian Herington.

Box Office Open 10.0 a.m. to 6.30 p.m.

Licensed Bar—at back of Stalls

For good food good wine

. and personal service

Come to

THE

BAY TREE GRILL
BURLINGTON HOTEL
FOLKESTONE Tel. 4663

Oclee & Son

LTD.

Jewellers

Founded by John Oclee 1803

Watchmakers and Clockmakers

Antique and Modern Silver

35 SANDGATE ROAD, FOLKESTONE

'Phone 2654

FOR

ELECTRIC CHIMNEY SWEEPING

'phone FOLKESTONE 2417

or write

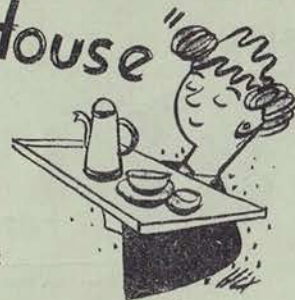
ULTRA ELECTRIC CHIMNEY SWEEP
"WHITE WEBBS,"
HAWKINGE

'phone
89347
(after 6 p.m.)

"The Coffee House"

An EXCELLENT choice of Tea and
Coffee, and a DELICIOUS selection
of Cakes and Fancies

BOUVERIE ROAD WEST
FOLKESTONE Phone 3636



JARMAN & WATTS Ltd.
ACTUAL DYERS
118 Sandgate Road Folkestone Phone 4172
11 Guildhall Street Folkestone Phone 3841
DRY CLEANERS

Making your home in Folkestone ?



will be pleased to welcome you with a
FIRST CLASS REMOVAL
7 Grace Hill, Folkestone
Telephone : 3247
Also at Ashford and Hythe

**COLONIAL & FOREIGN
STAMPS**

Great Britain a Speciality:

COLLECTIONS BOUGHT

JOHN FOSBERY
74 Sandgate Rd., Folkestone
(1st floor above Bodsham Farm Shops Ltd.)

BUILDERS & CONTRACTORS

Wm. **DUNK** Ltd.

Phone
51651/2

Phone
51651/2

47 TONTINE STREET, FOLKESTONE

E. K. PLANT Ltd.

For all Contractors Plant