

*J.B.E. and D.S.B.E. 114 Sept 1959*



**LEAS PAVILION**  
**FOLKESTONE**

TEL. 2466

For Two Weeks  
Commencing  
**MONDAY, 7th SEPTEMBER, 1959**

THE  
**Arthur Brough Players**

present

**NOT IN THE BOOK**

A COMEDY BY  
**ARTHUR WATKYN**

30th Season

883rd Production



**Programme**

**Threepence**

**FOUNDED 1830**

Since when, noted for good quality  
**FURNITURE - FABRICS - CARPETS**

Curtains and Loose Covers  
made by skilled staff

If you have a furnishing problem  
telephone us and our  
representative will call

**FLASHMAN**

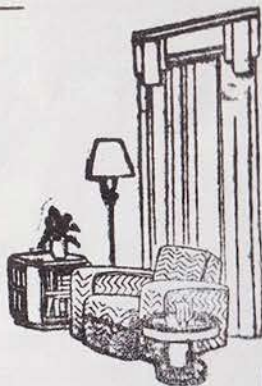
& Co., Ltd.

**129 SANDGATE ROAD**

And at Dover

**FOLKESTONE**

Telephone 2982



*Heating Installations  
Oil Burning Equipment  
Hot and Cold Water Systems*



---

**M. W. LONGLEY Ltd.**

---

*Contractors to Air Ministry, War Department, Ministry of Works  
Regional Hospital Boards and K.C.C.*



**10 Cheriton Gardens  
Folkestone**  
Telephone 57101/2

---

**JOHN LUKEY & Sons, Ltd.**

Established  
1853

*Wine and Spirit Merchants*

**FINE OLD TAWNY PORT "MUSKETEER"**  
16/- PER BOTTLE

**101 SANDGATE ROAD, FOLKESTONE**

also at DOVER and WALMER

Tel.: Folkestone 3169  
(Two lines)

---

*Jessie Brown*

**75 SANDGATE ROAD  
FOLKESTONE**

*Specialists in*  
GOWNS  
COATS  
SUITS and  
KNITWEAR

Tel. 3678

---

**JOHN STRICKLAND**

---

---

for

**BREAD**  
and  
**CAKES**

---

---

**FOLKESTONE**

Telephones:  
SANDGATE ROAD 3613  
BAKERY 3862

# LEAS PAVILION

## FOLKESTONE

Proprietors - - - The Leas Pavilion (Folkestone) Ltd.

Telephone 2466

Licensee and Manager : H. J. Horner

THE

## Arthur Brough Players

present

# NOT IN THE BOOK

A COMEDY BY  
ARTHUR WATKYN

### *Characters in order of appearance :*

Sylvia Bennett	...	...	...	PATRICIA PARRY
Michael	...	...	...	JAMES LOCKER
Timothy Gregg	...	...	...	GRAEME SPURWAY
Inspector Malcolm	...	...	...	PETER WALTER
Andrew Bennett	...	...	...	ARTHUR BROUGH
Pedro Juarez	...	...	...	PETER POLAK
Colonel Barstow	...	...	...	MARTIN BRADLEY
Dr. Locke	...	...	...	RICHARD HUGGETT

*Produced by Arthur Brough*

Scenery Designed and Executed by R. F. Packham.

## SYNOPSIS OF SCENES

The action of the play takes place in the Lounge Hall in the Bennetts' house at Wokenham—a small town outside London.

### ACT I

- Scene 1. Friday evening.  
Scene 2. Saturday evening.

### ACT 2

Sunday evening.

### ACT 3

Monday evening.

---

Stage Director	...	...	...	Paul Barker
Scenic Artist	...	...	...	R. F. Packham
Electrical Effects	...	...	...	D. Stokes
Stage Managers	...	...	...	{ Marina Kingsley Piers Young
Booking Office	...	...	...	Mrs. J. Wilson

---

The undermentioned kindly loaned by :

Furniture—Bobby & Co., Ltd., Sandgate Road.  
T. H. Boughton Bouverie Road West.  
Lord & Fisher, Tontine Street  
Parfums, Manor Road.  
Walter's, Tontine Street.

Glass and China—Upton's Sandgate Road.

Electrical Fittings & Shades—Bobby & Co., Ltd., Sandgate Road.

Properties—Peter's Corner Cheriton Place.

Allans Tontine Street.

Timothy Whites & Taylors, Sandgate Road.

Radio set by Radio Rentals, Guildhall Street.

Leather Goods by "Lindy Lou", Guildhall Street.

Ladies' Hairstyles by Constance Fermor, West Terrace.

Nylon Stockings by KAYSER BONDOR

Flowers & Plants—The Flower Farm Florists, George Lane.

Sound by D. Stokes, Hayton Manor, Stanford.

## NEXT PRODUCTION

For the first of our Autumn productions—on Monday, 21st September—we are giving the stage premiere of Michael Voyseys, "THE AMOROUS GOLDFISH," which has been adapted for the stage from the Author's B.B.C. Television play, which was hailed by all the Critics as an outstanding thriller.

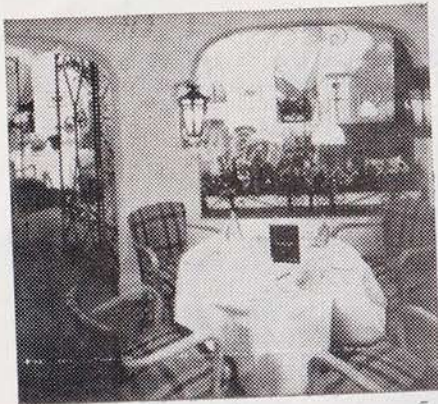
Set in Victorian England, it opens with rich, middle-aged and lonely Miss Wallace (to be played by Julie Deller, making a welcome return to the Company) falling for the beady little eyes of "Captain" Coppard (played by Peter Walter). Coppard persuades the lady to buy a farm where they could set up house, diligently practised forgery, and when he begins to talk about filling in the moat with a rose garden we can make a shrewd guess as to where some of the rubble will come from. In addition to picking and stealing, "the Captain's" fingers were also fond of pinching and squeezing, and it is this that eventually leads to his undoing.

This exciting play, full of atmosphere and tension, is in the same genre as the ever popular play "Gaslight" which was so successful some years ago.

The cast will also include :—Elizabeth Addyman, Patricia Parry, Jennifer Kennedy, Marina Kingsley, Graeme Spurway and James Locker. The production will be by Arthur Brough.

Box Office Open 10 a.m. to 6.30 p.m.

### **Licensed Bar—at back of Stalls**



**THE BAY TREE GRILL  
AND BAR**

**THE BURLINGTON**  
400 yards from this Theatre

Phone 4663  
for Table Reservation  
**GOOD FOOD**

Intimate  
surroundings

Late meals

Weekdays to 10.30 p.m.  
Saturdays to 11 p.m.

# Oclee & Son

LTD.

Jewellers

Founded by John Oclee 1803

*Watchmakers and Clockmakers*

*Antique and Modern Silver*

35 SANDGATE ROAD, FOLKESTONE

'Phone 2654

FOR

## **ELECTRIC CHIMNEY SWEEPING**

'phone FOLKESTONE 2417

or write

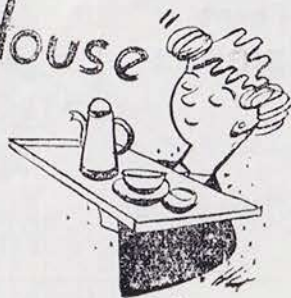
**ULTRA ELECTRIC CHIMNEY SWEEP**  
**"WHITE WEBBS,"**  
**HAWKINGE**

'phone  
89347  
(after 6 p.m.)

## "The Coffee House"

An EXCELLENT choice of Tea and  
Coffee, and a DELICIOUS selection  
of Cakes and Fancies

**BOUVERIE ROAD WEST**  
**FOLKESTONE** Phone 3636



**JARMAN & WATTS Ltd.**  
ACTUAL  
DYERS  
118 Sandgate Road Folkestone Phone 4172  
11 Guildhall Street Folkestone Phone 3841  
J  
ARMAN  
&  
WATTS  
LTD.  
DRY  
CLEANERS

Making your home in Folkestone?



will be pleased to welcome you with a  
**FIRST CLASS REMOVAL**

7 Grace Hill, Folkestone

Telephone: 3247

Also at Ashford and Hythe

**COLONIAL & FOREIGN  
STAMPS**

Great Britain a Speciality:

COLLECTIONS BOUGHT

**JOHN FOSBERY**

74 Sandgate Rd., Folkestone  
(1st floor above Bedsham Farm Shops Ltd.)

**BUILDERS & CONTRACTORS**

Wm. **DUNK** Ltd.

Phone  
**51651/2**

**47 TONTINE STREET, FOLKESTONE**

Phone  
**51651/2**

**E. K. PLANT** Ltd.

**For all Contractors Plant**