

*Leas Pavilion
Theatre
Folkestone*

THE BAY TREE RESTAURANT



We have a very good a la carte, and below are some examples of speciality dishes:

Grilled fresh local Lemon Sole and Maitre d'Hotel butter £2.80
Guinea Fowl with Calvados £3.20
Filet Mignon £3.00

There is of course a comfortable cocktail bar for diners to enjoy a pre-meal aperitif. Ample car parking facilities

**RESERVATIONS:
TELEPHONE:
FOLKESTONE 55301
EARLS AVENUE,
FOLKESTONE, KENT
AA * * * * RAC**

BUSINESS LUNCH £3.50 (inc. VAT)
Excellent choice of courses.
DINNER £4 (inc. VAT). First rate selection

THE BURLINGTON HOTEL

Martin Walter NEW & USED CARS



SALES-Always a large selection of New and Used Cars to choose from addresses below.

SERVICE-We have the knowhow and facilities to service almost any British or Foreign make of car.
Caesars Way, Folkestone, 76431

PARTS-To make it easy on your pocket (and our staff) we carry large stocks of replacement parts for VAUXHALL, BEDFORD, FIAT, CITROEN, MERCEDES BENZ

New Car Showrooms
Castle Street, Dover 203001
Sandgate Road, Folkestone 53103
Used Car Centre
Christchurch Road, Folkestone 53103

CHARLES VANCE WELCOMES YOU TO THE LEAS PAVILION THEATRE



Dear Theatregoer,

It is with particular pleasure that we welcome you to the theatre in this third season since taking over the lease in late 1976. After 49 years of seasonal weekly repertory we are now poised, in this 50th year of production, to take our place as a regional theatre with an extended season of fortnightly repertory.

The days of "commercial" repertory are virtually over and during the last 25 years the major provincial Companies have become subsidised and registered as non-profit making charities. In this way it has been possible for the standard of theatre in the regions, with the aid of government and private subsidy, to attract an ever widening audience and improve the quality of life in the community which it serves. During the past several decades this metamorphosis took place in Canterbury and the Marlowe Theatre there has rightly taken its place amongst the leaders of this theatrical revolution under the aegis of an enlightened City Council and the financial support of the Arts Council of Great Britain.

It would be virtually impossible to achieve the standards of theatre which we believe the Leas Pavilion Theatre should provide without taking steps to attract financial assistance from the funding bodies and at the same time ensure that our contribution to the community was moving in the right direction by establishing a Board of Trustee Directors for the Theatre Company composed of those in the forefront of community life in Shepway. For this reason, with much appreciated guidance from colleagues in the Arts Council and in particular Peter Carpenter, the Director of South East Arts Association, we formed the FOLKESTONE THEATRE COMPANY which has now been registered as a Charity by the Charity Commissioners. This, then, is the Company which will present the productions at the Theatre and we are proud that it has, as its initial directors, leaders from the civic, commercial and professional life in the Shepway community. Already Shepway District Council has shown itself ready to give financial assistance to the Theatre and applications for production grants are under consideration by the Arts Council.

We are working very closely with the Education Authorities both in Shepway and Dover and as a result we will be presenting a number of special productions during our seasons which will have, inevitably, special appeal to schools — whilst, we hope, still providing entertainment for our regular theatre audiences. One example of this is the current season's production of "The Merchant of Venice," the first Shakespeare production at the Leas in virtually living memory!! We are grateful to South East Arts Association who gave us special financial assistance for this production.

Many people, inevitably, will ask why the community and the ratepayer should be asked to provide financial assistance for what they see as a very minority interest. This debate has gone on ever since the turn of the century when local authorities took on the financial responsibility for the local library. At that time there were outcries and yet today is there anyone who would question the right of a town to have its library? By the same token, we are on the brink of an age which is providing more leisure time than ever before and we believe that there must be provision for that leisure in the form of sports centres and places of entertainment. And you know with its varied programme of plays, musicals, pantomime and theatre club activities last year our theatre provided leisure time activity for over 35,000!! And that number is growing all the time!!

I may own the building but I hope that the people of Shepway will look on the new image Leas Pavilion Theatre as **their** Theatre. I hope that we can all be as proud of it as an integral part of community life as are the people of Canterbury. Kent is not richly endowed with theatres like many other counties, and indeed the Leas and the Marlowe are the only repertory theatres in the whole county.

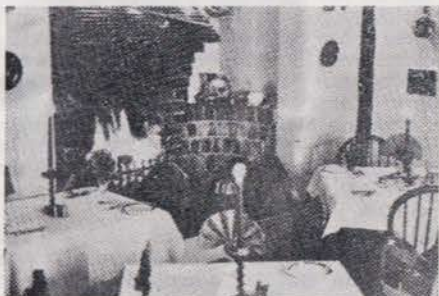
Elsewhere in this programme are details of our programmes, our theatre club and our future plans for the life of "The Rep."

In this 50th year of production, as we enter the new era of production style, dare we hope that the words "The Rep" will become an integral part of the social pattern.

Why not become a regular? And I don't just mean a fortnightly visit to the shows. Why not use the Coffee Bar as your regular meeting place? You just might interest a friend in YOUR theatre! And don't forget the Theatre Club! And the Theatre Shop (for that odd gift) . . . With your help it really all could be happening at "The Rep."

Blue Dolphins

16th CENTURY RESTAURANT and HOTEL



Good Traditional Home Fayre

Small Parties
catered for

**Our Specialities are Highly
Recommended**

Under the personal supervision of
Peter and Anne Payne.

Reservations appreciated: New Romney 3224. - Closed Sunday

DYMCHURCH ROAD - NEW ROMNEY - KENT

Get away from it all at the . . .

Sandgate Hotel



Roast Beef Sunday Lunch £3.75

Evening Dinner - - £3.75

**Cream Teas served every
afternoon on the patio**

Bookings for meals in advance please
(Prices do not include VAT)

* **BAR SNACKS and SPECIAL SAUSAGES**

* **SPECIAL FUNCTIONS CATERED FOR**

**8/9 WELLINGTON TERRACE
THE ESPLANADE, SANDGATE**

Telephone 38636



H. WALD & CO.

(H. Wald, F.R.I.C.S.)

*Chartered Surveyors,
Chartered Auctioneers and
Estate Agents*

For All Types of Property

8 Bouverie Square, Folkestone

Telephone 55069

Sales

Surveys

Valuations

Mortgages



THEATRE LECTURES AND COMMUNITY SERVICE

As a theatre unit we have a skilled team of professional specialists who can be available to give lectures to study groups and schools on design, stage management and the theatre generally. In this whole field of educational theatre the Administrator will always be pleased to hear from schools and other groups who would like to arrange a visit either to their school or at the theatre.

Many local societies and clubs invite our artistic director, Charles Vance, to talk to their members about his wide theatre experience in all parts of the world. Although the demands on his time professionally can be heavy, nonetheless he is always happy to visit such groups or to speak at functions when time permits. It is recorded in "Who's Who" that he has given over 300 talks on theatre throughout the world. If you would like him to speak at your function why not have a word with his Production Assistant on Folkestone 59097 or drop her a note. Whether it's a visit to a Women's Institute or responding to the toast of "The Guests" at a public function he has been a sought-after speaker for many years . . . and he makes no charge for his services!!

THEATRE POSTCARDS

The majority of major theatres in the regions now have their own special postcards, and many theatregoers collect these from their visits to theatres not only in England but around the world.

Following our redecoration of the auditorium last year we invited Bennett Publications, the postcard specialists, to produce two postcards for us. These are now on sale in the Theatre Shop and at the Box Office and make ideal souvenirs of your visit to the theatre or, indeed, a "holiday card" for visitors on holiday in Shepway.

The first of these cards shows the unique Edwardian auditorium looking from the stage to the rear of the theatre, and the other is photographed from the side balcony looking towards the stage. The cards are priced at 8p each and, we hope you will agree, capture the special atmosphere of the Leas Pavilion Theatre.

BOOKING ARRANGEMENTS

Of course the majority of our seat reservations are made at the Booking Office either by a personal visit between the hours of 10 a.m. and 8 p.m. (except when there is no performance and the Booking Office closes at 6 p.m.). There Gwen Halsey (or Vera or Lee) will be happy to arrange your booking in person or on the telephone (0303) 52466. Telephone bookings will normally be held until half an hour before the performance on the day for which they are booked.

However, we are anxious to provide as wide a booking facility as possible for our patrons, and it is often not practicable for our friends outside Folkestone to visit the theatre or to telephone to make reservations. We are, therefore, pleased to announce that we have now established ticket agencies in Ashford, Canterbury, Deal, Dover, Hythe and Tenterden in addition to Folkestone. We trust that you will find this service of value, and assure you that our agents will provide you with that same personal service which you would enjoy from our own booking office team. The agencies are as follows:—

ASHFORD: Baldwins Travel Agency, 51 High Street. Telephone 25245.
Swinards, Bank Street. Telephone 34321.

CANTERBURY: Pickfords, 28 St. Margarets Street. Telephone 62237.

DEAL: Fortune Tours, 96 High Street. Telephone 4665.

DOVER: Pickfords, 10 Worthington Street. Telephone 206273.

FOLKESTONE: Information Centre, Shopping Precinct.
South East Tourist Board, Harbour Way.

HYTHE: Swinards, 26 High Street. Telephone 66558.

TENTERDEN: Swinards, 3 The Fairings. Telephone 2633.



SERVICE — SALES — SPARES

HILLS

SERVICE GARAGE (FOLKESTONE) LTD.

360 CHERITON ROAD - CHERITON - FOLKESTONE - KENT

Telephone: 75412 or 77336

5 FREE

Double Tickets to this Theatre from **HILLS**

When Purchasing your Renault from **HILLS**

and Producing this Advertisement to **HILLS**

GARDEN HOUSE HOTEL

The Grill Restaurant

AND BAR CARVERY (not Sunday)

Gives a new dimension to dining out. Supplementing our already very successful bar carvery, the Grill Restaurant offers you an extensive choice of menu at a very reasonable price.

With all the comfort of table service in the garden room, there is no better way, at the price to entertain. Served between 12.00 and 2 p.m. and 7 to 10 p.m. every day (Sunday 8.30 p.m.). We hope to welcome you in the near future.

Telephone (0303) 52278/9 or call in at
142 SANDGATE ROAD - FOLKESTONE - KENT

For details of our other facilities including:—

DINNER DANCES, WEDDING RECEPTIONS,
FUNERAL LUNCHEONS and TEAS.

CHRISTENING PARTIES and all types of MEETINGS.

Please telephone and ask for our comprehensive
brochure.

OUR BAR IS OPEN TO NON-RESIDENTS



LEAS PAVILION THEATRE FOLKESTONE

Box Office Telephone 52466

Commencing Tuesday, 10th April, 1979

The Folkestone Theatre Company

presents

WHO SAW HIM DIE?

by Tudor Gates

Directed by Imogen Moynihan

Designed by Geoff Stanfield

FORTHCOMING ATTRACTIONS

Tuesday, 24th April for two weeks until Saturday, 5th May
Evenings at 8 p.m. Matinees Wednesdays at 3 p.m.

THE BIRTHDAY PARTY

By Harold Pinter

B. A. Young, the distinguished theatre critic of the 'Financial Times', acclaimed Charles Vance's first production of Harold Pinter's classic play as being one of the most perfectly co-ordinated performances that created a unique theatrical experience. He is particularly delighted to be directing the play again in his own theatre in Folkestone.

But what is the play about? Who is this strange, neurotic, sullen yet intelligent youth who lodges with a seaside landlady and her deckchair attendant husband. Who is he? Where did he come from? Why does he cower in bed for the greater part of the day? Then come the two strange men. Are they from the I.R.A., hunting down an informer? Are they perhaps Mafia types avenging some betrayal of a loved one? Are they really looking for the lazy youth, or don't they even know him — or are they mistaken? What happened in the dark? What did they finally do? Where did they take the frightened one?

No two theatregoers will ever find the same answer to the strange questions thrown up by Pinter's all-absorbing play, but one thing is certain — lovers of exciting and interesting theatre will have a stimulating, tense and at the same time highly amusing evening at this particular party.

Tuesday, 8th May for two weeks until Saturday, 19th May

Evenings at 8 p.m. Matinees Wednesdays at 3 p.m.

THE SECRETARY BIRD

By William Douglas Home

What better way to break into summer than with a light-hearted romp by one of the most popular comedy playwrights this country has ever produced. William Douglas Home has an astonishing string of West End successes behind him, equalled only by the prolific Alan Ayckbourn.

'The Secretary Bird' ran for nearly 4½ years at the Savoy Theatre and was to prove one of his most popular romps. The course of true love never does run smooth — especially when a man and his wife have her lover staying at the family home for the weekend! Such a situation provides the perfect setting for a multitude of laughs, and these are exploited to the full in William Douglas Home's hysterically funny play.

The scene is set in a country house owned by novelist Hugh Walford, and his wife Liz has fallen in love with stockbroker John Brownlow. After fifteen years of marriage she suddenly plans to run away with him. Hugh decides to fight fire with fire, and invites his rival down for the weekend — but he also invites Molly, a secretary, and hints to his wife that Molly can be very accommodating. In an effort to make Liz jealous, Hugh flirts with Molly — and then the fireworks really begin!

This is a delightful, gentle comedy which will appeal to theatregoers of all ages.

THEATRE CLUB NEWS

The Theatre Club, at the time of going to press, has had a most interesting meeting with Artistic Director, Charles Vance, to discuss its future plans and to hear about some of the new developments planned for the Leas Pavilion Theatre. Not least of these is an ambitious project to turn what will be the new steak bar restaurant into a club room for members in 1980. In the meantime, plans are afoot to have regular Club social evenings after the performance with the cast in the bar throughout the whole summer season, on Friday nights. The next Club meeting will be on Monday, 23rd April, when Charles Vance will be directing THE BIRTHDAY PARTY, by Harold Pinter, and members of the Club are being invited to 'look in' on rehearsals as they progress prior to the opening. This promises to be a most stimulating evening.

For Table Reservations Phone 55762 or 55866

Emilio's RESTAURANT PORTOFINO

Open (including Sundays) 12—2.30 p.m. and 6—10.30 p.m. Closed Mondays
Private Parties catered for - Fully Licensed

124A Sandgate Road, Folkestone

Nicola's Restaurant (L'ESCARGOT)

3 TRINITY CRESCENT - FOLKESTONE - KENT

(just off Sandgate Road, opposite Holy Trinity Church)

Reservations: FOLKESTONE 53864

Open 12 noon to 2.30 p.m. and 6.30 to 11 p.m.

YOU NEED YOUR

SOUTH KENT

Folkestone Hythe & District

Gazette Herald

WEDNESDAYS

SATURDAYS

FOR LOCAL AND HOLIDAY ENTERTAINMENT

HOP KWENG Chinese Restaurants

ENJOY THE SECLUDED ATMOSPHERE AND TRADITIONAL COURTESY
AT EITHER OF THESE RESTAURANTS

BOTH OPEN SEVEN DAYS A WEEK

12 Noon — 2.30 p.m. and 6 p.m. — 11.45 p.m.

34 ST. MARGARET'S STREET
CANTERBURY
CANTERBURY 64231 & 65629

MAJESTIC HOUSE
SANDGATE ROAD
FOLKESTONE 56532 & 56536

The Tigers
Moorish Patio
The great 'Trojan' stairway
Marsh and Channel views
The Black Rhinoceros
African Buffalo
House and Southern Terrace
2 1/2 Mile Zoo Trek

**JOHN ASPINALL INVITES YOU TO VISIT
PORT LYMPNE
Wildlife Sanctuary and Gardens**

Roam free in 270 magnificent acres. Take the 2 1/2 mile Zoo Trek. Visit the historic house, wildlife art gallery and gardens. Enjoy the glorious views. See the rare and beautiful animals. Picnic areas.

Lympne, nr. Hythe, Kent.

UNITED
55111

**TWENTY FOUR HOUR
SERVICE**

at your Service

FOLKESTONE THEATRE COMPANY LIMITED

(Registered as a Charity)

Board of Trustee Directors:

SIR GERALD GLOVER
THE RT. HON. THE LORD BRABOURNE
CLLR. JOHN JACQUES
CLLR. IVY ALLEN

H. R. PRATT BOORMAN, C.B.E., M.A., D.L.
CHARLES VANCE, Esq., F.R.S.A.
THE HON. MRS. IMOGEN VANCE

Ex Officio:

The Chairman of the Folkestone and Hythe
Hotels and Catering Association

Counsellor:

PETER CARPENTER, Esq.,
Director, South East Arts Association

The Folkestone Theatre Company acknow-
ledges with thanks the financial assistance
of Shepway District Council and South East
Arts Association.

Artistic Director/Administrator

CHARLES VANCE

Director of Productions

IMOGEN MOYNIHAN

Production Assistant

BRIANNE MANKTELOW

Box Office

GWEN HALSEY, VERA BURROWS
LEE HOWES

Bar and Catering Manageress

VALERIE HOGBEN

Designer

ROBERT SANDIFORD

Resident Stage Management Team

SUE CHERITON
DAVID BARON (Technical Assistant)
JOHN CHERITON (Electrician)

MAILING LIST

The Theatre regularly publishes a bro-
chure with fullest details of forthcoming
programmes and details of booking
arrangements and special attractions. For
an annual subscription of only £1 to cover
costs of postage, etc., we will add your
name to our mailing list and so ensure
that you have your theatre programme as
soon as it is published. Please send your
name (together with your £1) to Brianne
Manktelow, Production Assistant, Leas
Pavilion Theatre, and she will do the rest.

THEATRE SHOP

Why not pay a visit to our theatre shop,
where members of the Theatre Club can
offer an ever-changing selection of gifts
and home crafts at a wide range of reason-
able prices. By supporting the theatre shop
you not only find useful bargains but you
are making a contribution to the life of
the theatre.

CATERING ARRANGEMENTS

Every day during the theatre season our PLAYBILL CAFE is open from mid morning
until after the final interval in the evening performance.

Here we serve tea and coffee and provide at most reasonable prices a service of sand-
wiches (in dozens of varieties) and salads. In addition we always have a selection of
specially home-made cakes and we stock a large selection of confectionery and biscuits,
and of course soft drinks.

The most popular range of Walls' Ice Cream Specialities are also on sale in the Cafe
and there is an ice cream service during the performance intervals. There is a fully licensed
bar, open from half an hour before evening performances and during the intervals. To save
time to enjoy your interval drink, why not order it before the performance? It will then be
waiting for you when you get to the bar.

If you are planning a party visit Mrs. Hogben, our Catering Manageress, who will be
pleased to arrange for light refreshments for your party before or after the show . . . salads,
sandwiches, cakes, etc. with tea, coffee or something stronger at very competitive prices.

Alternatively, you may wish to arrange a PRE-THEATRE DINNER. This is a new and,
we think, very generous scheme which we operate with a restaurant of high quality within
a few minutes walking distance of the theatre. Before the production we can arrange a
three-course meal in this delightful restaurant — with a choice of dishes — for only £1.00
per head !! And they will ensure that you enjoy your meal in plenty of time to get to the
theatre for the performance. Contact the Box Office for further details.

CONFERENCES

Our seating capacity is just under 400 and we can fully accommodate the conference
requirements of smaller groups. Already a number of major conference organisers are
using the theatre outside performance times, and our technical staff can arrange the usual
facilities for slides, microphones, etc. Our prime location, with the principal hotels within
walking distance, will give your meeting or conference the ideal ambience and resources
in 1980. If you are interested and would like to discuss your projected conference in detail
please telephone or write to the Administrator (his special telephone line is 0303 59097)
and he will be pleased to make an appointment to meet you.

HALLETTS OF SANDGATE

CAN SUPPLY MOST EVERYTHING FOR YOUR HOME

IMPROVEMENT NEEDS

Kitchen Units and Bathroom Suites
Decorating Materials and Wallcovering
Copper and Plastic Plumbing
Gardening, Hand Tools and Ironmongery
Roofing Sheets and Guttering
Hardboard, Glass and Polythene Sheeting

EXPERT ADVICE ALWAYS AVAILABLE AT—

HALLETTS

26-30 SANDGATE HIGH STREET

FOLKESTONE 38777 & 38778

Open Monday to Friday 8.30 — 5.30 inclusive
Saturday 8.30 — 1.00



FREE
CAR PARKING

(In Gough Road rear of
premises).

THEATRE SUPPORTERS CLUB

Of course there are all kinds of advantages that can be built up from being a member of a theatre supporters club . . . BUT that is not its prime objective. Its most important function is to provide a strong backbone of support for the theatre and build up a social ambience for those in the community with a common love of the theatre.

Of course we try to establish special advantages for members, but it is from within the membership itself that the impetus must come to develop exciting activities . . . the theatre team is always there to help bring such plans to fruition. For example, if the members of the Club would like to arrange visits to other theatres or festivals (such as Chichester or Stratford) then the theatre would be able to get special reductions for the party. As the theatre's popularity grows inevitably certain productions will attract heavy bookings, and so we shall always ensure that Club members get priority booking facilities (and anyway they know the programme before anyone else!). We plan a number of social functions for members, including parties with the Company and coffee mornings to plan further Club activities.

Already the small nucleus membership of the Club has done so much to help "The Rep," and it is their voluntary help which keeps the Theatre Shop on the move and thus make its contribution to the life of the theatre.

We see the role of the Club member growing as the Folkestone Theatre Company itself grows . . . we hope that members will help in the theatre's publicity campaigns; we hope that we might (like so many other regional theatres) get Club membership assistance in providing voluntary stewards at every performance . . . and, in return, as future plans for the theatre are developed during the next few years, we are trying to make provision for a Theatre Club Room.

A strong Theatre Club will ensure a strong future for the theatre . . . A strong Theatre Club will have an important voice in the future plans for the theatre . . .

Will YOU help make the Club strong by becoming a member? It will cost you £1.50 a year ! ! ! BUT we don't just want your money . . . WE WANT YOU !!

Fill in the form below and send it in today, or if you don't want to tear your programme just drop a note to the Theatre (marked Theatre Club) enclosing your "sub" and PLEASE a stamped addressed envelope.

To: THEATRE SUPPORTERS CLUB, Folkestone Theatre Company,
Leas Pavilion Theatre, The Leas, Folkestone.

Enclosed please find my subscription of £1.50. Please enrol me as a member of the Club and send my Membership Card and Newsheet in the enclosed stamped addressed envelope.

Name

Address

THEATRE PUBLICITY

In addition to regular advertisements in the Press, the theatre publicises its activities on brochures and display cards and posters. We are always anxious to make our activities known to a wider public, and perhaps YOU could help us.

If you have a shop, or are secretary to a club or public hall, would you be willing to arrange to display one of our cards or posters? If you would, then just leave your name at the Box Office or give us a ring and we'll see that it is delivered to you regularly . . . and MANY THANKS.

OCLEE JEWELLERS

Fine Diamonds Omega Watches
Antique and Modern Silver

35 Sandgate Road, Folkestone

● OVER 100 YEARS IN FOLKESTONE ●

Wallace Hale Ltd. THE MAN'S SHOP

For Men Who Appreciate Quality

The Directors and Staff of Wallace Hale will be pleased to welcome, and assist you in the selection of the finest clothes, in styles backed by the leading designers of men's wear.

126 SANDGATE ROAD, FOLKESTONE

Phone 52512



Folkestone Sports Centre

SPORT FOR EVERYONE!

SWIMMING	SKIING	TABLE TENNIS
SUB AQUA	KARATE	TENNIS
BADMINTON	WEIGHT TRAINING	ROLLER DANCE
GOLF	VOLLEYBALL	BASKETBALL
SQUASH		NETBALL

RESTAURANT AND LICENSED BAR

Radnor Park Avenue Folkestone Kent Tel: Folkestone 58222/3



The venue for Good Food for over eleven years

La Tavernetta

Romano and Staff and in particular Chef Felice continue to maintain the very high standards for which La Tavernetta is renowned:

Open 12—2.30 p.m., 6—10.30 p.m. Business Lunch served Monday—Friday
Closed Sunday

Leaside Court, Clifton Gardens, Folkestone. Tel. 54955 and 55044

SAGA

SENIOR CITIZENS HOLIDAYS LIMITED

119 Sandgate Road, Folkestone, Kent

Tel: (STD 0303) 30311

The world's leading specialists in reasonably priced, value for money holidays for the Over 60's.

In 1979 we have a wider than ever selection of holidays at home, abroad and on cruise ships.

Prices begin at just £35 all-in for a week in Britain.

Why not call into our Sandgate Road Travel Centre to discuss your holiday plans with our friendly young staff?

We look forward to seeing you.