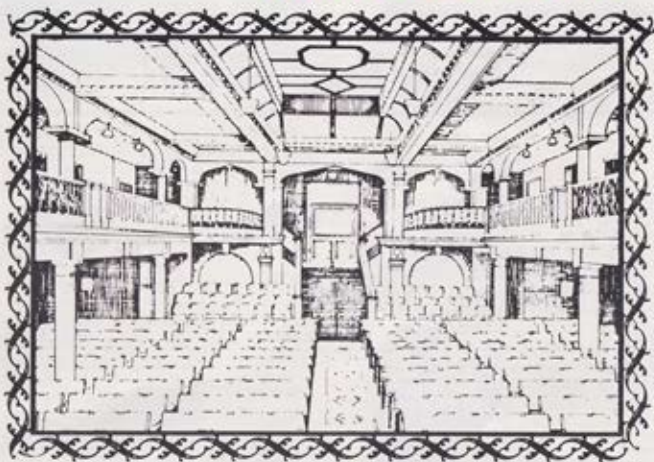


Leas Pavilion Theatre

F · O · L · K · E · S · T · O · N · E



Charles Vance

1902

PRESENTS

1982

80th BIRTHDAY YEAR

AFTER THE PERFORMANCE ENJOY A
THEATRE DINNER

AT THE **Bay Tree Restaurant**

'complete your evening with a superb candlelit dinner in the elegant surrounds of our fine restaurant' choice of table d'hôte or a la carte menus

.....and EVERY WEEKEND.....

- * Saturday Night Gourmet Dinners
- * Traditional Sunday Lunches

Table Reservations are essential -

Telephone: 55301 for yours!



'at the end of the famous Leas' Free Parking

The Burlington Hotel

Earls Avenue, Folkestone

JOIN the experienced over-60 holidaymakers

MORE SUN
through over
50 warm resort
locations

MORE SMILES
through more
experience in
over-60
holidays

**MORE INTERESTING
LOCATIONS**
in the U.K. and
abroad with
free rail travel
and full board

**MORE SPECIAL
INTERESTS**
through 100's
of specialised
SAGA
holidays

MORE TIME
through
expertly run,
organised,
headache-free
holidays

**MORE MONEY TO
SPEND**
since you
pay less for
your SAGA
holiday



....with **SAGA**

Britain's leading holiday company for those aged sixty plus. So before you decide on your next holiday why not come and talk to the experts. Just pop into our SAGA Travel Centre at:

**119 SANDGATE ROAD
FOLKESTONE, KENT**
or telephone: (STD 0303) 30000

Our friendly staff will be able to advise you about the splendid range of holidays in Britain, Europe and America, as well as an excellent choice of cruises. Prices begin at £60 for a week, (including rail travel and full board accommodation), at a popular U.K. resort.

Feel secure when you travel with

**SAGA.....talk to us first
at 119 SANDGATE ROAD
FOLKESTONE**

Charles Vance welcomes You to the Leas Pavilion Theatre



who spring readily to mind. Arthur Brough's great tradition was carried on after his retirement by the late Richard Burnett of Penguin Players fame and Robert Howard and his family carried the repertory flag in Folkestone until my wife and I purchased the Theatre in 1976.

We have been proud to have played our part in carrying on the tradition and we like to feel that in the past five or six years we have started to restore the Theatre to some semblance of its Edwardian glory. We are particularly grateful, in this birthday year, to the Folkestone Theatre Supporters Club who have so generously given of their time to raise the money to recarpent the centre of the auditorium for your greater comfort.

Today, of course, we are a Charitable Company for no repertory Theatre could survive without grant aid and we would like to acknowledge the financial support we receive from Shepway District Council and now, for the first time, the Kent County Council in making our work at the Theatre possible. We are also grateful to many local institutions and private individuals who are so generous with their financial help and we would particularly like to thank Mr Sidney de Haan for a generous financial contribution at the beginning of this season.

And so we are eighty years young this year and I renew the pledge I made to theatregoers in Folkestone when I came in 1976 to attempt to bring to you all which is good in live theatre entertainment and to carry on the great tradition of repertory in this wonderful, unique Edwardian playhouse.

Happy theatregoing.

CATERING ARRANGEMENTS

Our 'in house' catering facilities grow apace and with our inclusion in the Egon Ronay Lucas Guide 'Just a Bite' (the Good Food Guide for gourmets on a family budget), the Playbill Cafe has become a popular meeting place for residents and visitors alike, not only during visits to the shows, but as a rendezvous for morning coffee and light lunches.

As in the past, we serve tea, coffee and soft drinks and provide, at most reasonable prices, a service of sandwiches and salads, all of which are freshly made to order. One of the hallmarks of the Playbill Cafe is the exclusive range of homemade cakes which

Dear Theatregoer,

A very special welcome to you to the Leas Pavilion Theatre for tonight's performance. Both my wife and I and all the members of the Folkestone Theatre Company team hope you have an enjoyable evening and if there is anything we can do to make your visit to the Theatre more enjoyable, please do not hesitate to ask.

This is a very special year in the life of Folkestone's Theatre as on 1st July we celebrate the Leas Pavilion's eightieth birthday. It was on 1st July 1902 that a banquet was held in the Leas Pavilion, destined to be for the first twenty-five years of its life, a refined *déjanté*. The history of that early period of the Theatre's life is an intriguing one and I comment to those of you who are interested a fascinating article written by Julie Dellar, a former member of the Arthur Brough Players, on the early history of the Leas Pavilion in the journal 'Bygones of Kent' published in March of this year.

It was in 1928 that the Theatre started its life of repertory and for the past fifty-four years has an unbroken record of theatre presentation unmatched by any other Theatre in the British Isles.

In 1929 the late Arthur Brough started his unbroken forty years tradition of repertory which was to prove to be the cradle of so many distinguished actors in theatre today - names like Peter Barkworth, Michael Aldridge, David Tomlinson are but a few



SECURITY SERVICES (SOUTH EASTERN)

Suppliers and Installers of "AA" Action Alarm Equipment
Member of the Flowsail Security Group

Commercial & Domestic Intruder Alarm Installations (to B.S.)
Portable, D.I.Y. Car & H.G.V. Alarm Systems
Door & Window Security and Standard Locks with Fitting Service
Wall & Floor Safes Anti-Shoplifting Loop Alarms
Closed Circuit T.V. Surveillance Systems Intercom Systems
Fire Equipment & Emergency Lighting Units Security Mirrors
Door Phone & Electronic Entry Systems
Telephone Answering Machines (G.P.O. approved)
Telephone Audio Equipment & Cordless Phones

THE VENUE FOR GOOD FOOD
(EST. SINCE 1965)

La Tavernetta Restaurant

continues to maintain the very high standards
where Italian food is still at the best

Open 12—2.30 p.m., 6—10.30 p.m. Business Lunch served Monday—Friday
Closed Sunday Fully Licensed
Leaside Court, Clifton Gardens, Folkestone. Tel. 54955 and 55044

Nearest thing to the wild!

PORT LYMPNE ZOO PARK
near Hythe
TIGERS LEOPARDS CHEETAHS BUFFALO RHINO ELEPHANTS etc.
HISTORIC HOUSE & GARDENS ALL IN MAGNIFICENT SETTING

Howlett's ZOO PARK
near Canterbury
GORILLAS CHIMPANZEEES LEOPARDS TIGERS
ELEPHANTS WOLVES BISON... and much more



Romney, Hythe & Dymchurch RAILWAY

So much to see,
So much to enjoy!

A super 'awayday' for all the family!

The World's Only
Miniature Main Line Steam Railway
Travel 14 miles across the historic Romney Marshes in steam hauled trains from Hythe to Dungeness via New Romney and Dymchurch.
Frequent trains daily in Spring, Summer and Autumn. Cafes, gift shops, car parks, model exhibition at New Romney.
For further details, Party Bookings, etc. write or telephone The Manager, R. H. & D. Railway, New Romney, Kent. New Romney (06793) 2353.

which are specially made by friends of the Theatre. Indeed, many of our patrons order cakes to take home as well as for consumption in the Cafe.

A wide range of the most popular varieties of Walls ice cream specialities are on sale in the Cafe and, of course, there is an ice cream service during the intervals in performances in the Theatre.

Our FULLY LICENSED BAR at the rear of the stalls is open every evening from half an hour before the performance and during the intervals. For your greater comfort, at the same time, why not order your interval drinks before the performance and they will then be waiting for you without delay when you go to the bar.

If you are planning a party visit to the Theatre, Mrs Valerie Hogben, our Catering Manageress, will always be pleased to discuss with you special arrangements for catering for your party, either with the service of light refreshments or drinks or, indeed, a small buffet meal before or after the show.

Whatever the needs of your party, be it for two or two hundred, Mrs Hogben will always be pleased to hear from you and help you with the catering, which will make your visit to our Theatre even more memorable.

COMBINED THEATRE AND DINNER TICKET

In addition to the facilities we provide in the Leas Pavilion Theatre itself we have arranged with a popular local restaurant to provide the complete evening out on a combined theatre and dinner ticket. This was very successfully launched two seasons ago and the scheme accelerated in popularity. And what an inflation beater the scheme is! For only £7.00 you enjoy a three course meal from a choice of a popular menu at a highly recommended restaurant within walking distance of the Theatre and your choice of the best seat in the Theatre, all included in the price. You can take the dinner before or after the Theatre at your choice and when booking your ticket at the box office the staff there will arrange to book your table. This has also become a very popular form of gift and during the last year many of our patrons have bought two of these vouchers to give to family and friends as the ideal gift for the complete evening out. You are not obliged, of course, when giving it as a gift, to elect the evening when your friends will come and our box office Manageress will be pleased to discuss with you the gift voucher which you can give your friends so they can book the evening and the meal of their choice.

BOOKING ARRANGEMENTS

Inevitably, as in every Theatre, the majority of our bookings are made either in person at the box office or on the telephone. The box office is open every day, excluding Sunday, from 10am to 8pm (except on those days when there is no performance, when the box office closes at 6pm). Mrs Vera Burrows, our box office Manageress, Miss Lee Howes or Mrs Hilary Murray Pearce will always be happy to give their personal attention to your booking requirements whether you visit the box office or telephone on 52466. Telephone bookings will always be held until half an hour before the performance on the day for which they are booked, but if you have a long distance to travel, please do not hesitate to ask the staff to make special arrangements for you for your tickets to be kept for you.

However, we are delighted that our Theatre service extends beyond the boundaries of Folkestone itself and more and more people are coming to visit us from further afield. It is not always possible for patrons to come to the booking office themselves and many people do not feel they get a personal service when booking by telephone. For this reason we have been pleased to establish ticket agencies in a considerable number of conveniently placed venues throughout the region and we have now agencies in Ashford, Canterbury, Deal, Dover, Hythe, Margate and Tenterden, in addition to Folkestone itself. We trust you will find this service of value and we assure you our agents will provide you with the same personal service which you would enjoy from our own box office team. The booking agencies are as follows:

- ASHFORD: Baldwins Travel Agency, 51 High Street. Telephone 25245.
- Swinards, Bank Street. Telephone 34321.
- DEAL: Fortune Tours, 96 High Street. Telephone 4665.
- DOVER: Pickfords, 10 Worthington Street. Telephone 206273.
- FOLKESTONE: Information Centre, Shopping Precinct.
- Biggs Travel, 22 Cheriton Place. Telephone 53055.
- South East Tourist Board, Harbour Way.
- HYTHE: Swinards, 26 High Street. Telephone 66558.
- MARGATE: Biggs Travel, Marine Drive. Telephone 27563.
- TENTERDEN: Swinards, 3 The Fairings. Telephone 2633.

Near Hythe Kent

LYMPNE CASTLE

Open daily
May to September
10.30 to 6.00

WE WELCOME YOU TO BROUSE THROUGH OUR SUMMER RANGE
OF TOP QUALITY:

- ☆ COATS
- ☆ SUITS
- ☆ DRESSES
- ☆ EVENING WEAR
- ☆ JEWELLERY
- ☆ SCARVES

New & 'near-new' stock and many model clothes

PANDORA'S BOX

(JUST A FEW MINUTES FROM THIS THEATRE)

Bouverie Road West (Shopping Parade) Folkestone Tel. 59266

Max Keel AMERICAN DINER AND ICE CREAM PARLOR

(Fully Licensed Restaurant)

"THE BEST CHARCOALED BURGERS SINCE MINNEAPOLIS"
"WHO SAYS ITS EXPENSIVE TO EAT OUT?"

MAX'S SPECIAL

Delicious i barbecued
Maine lobster platter
— only £4.50

She deserves it!
Great burgers
& steaks &
cocktails
Minnsky's New
York Strip —
the longest
steak in town
Sample
Mamma's Man-
hattan pizza



CHILDREN'S PARTIES

From as little as £1
per head.
Mums — do the
shopping and leave
the kids to Max!
FREE masks, FREE
badges, FREE birth-
day cake for parties
of 12 and over.
Adult parties Special
offer: Take your
party to Max and
enjoy a free glass
of bubbly

"HAPPY HOURS" 6 - 8 pm — Half price pre-dinner aperitifs

OPEN NOW! MAX KEEL AT FROGMORES
128 Sandgate Road, Folkestone. Tel: 52889

45 TOWNWALL STREET, DOVER. Tel: 210192
CANTERBURY 63460 :: MAIDSTONE 64861

LEAS PAVILION THEATRE FOLKESTONE
Box Office Telephone 52466

Saturday 10th April for two weeks

THE FOLKESTONE THEATRE COMPANY
presents

THE MAN MOST LIKELY TO . . .

by Joyce Rayburn

Directed by IMOGEN MOYNIHAN
Designed by ADRIAN SMITH

IN THE INTERESTS OF YOUR SAFETY AND COMFORT SMOKING IS
NOT PERMITTED IN THE AUDITORIUM AND THE USE OF CAMERAS
AND TAPE RECORDERS IS STRICTLY FORBIDDEN

OCLEE

FOR FINE QUALITY JEWELLERY

35 Sandgate Road, Folkestone

THE MAN MOST LIKELY TO . . .

by Joyce Rayburn

CAST

Victor Cadwallader MICHAEL CLAUGHTON
Joan Cadwallader..... ELIZABETH STEPHENS
Martin Morley..... JAMES CHARLES
Shirley Hughes..... JANE BENNETT
Giles Cadwallader..... STEPHAN LE MARCHAND

Directed by IMOGEN MOYNIHAN

Designed by ADRIAN SMITH

The action of the play takes place in a week-end cottage in Berkshire. Time: 1963.

ACT 1

Saturday morning

ACT 2

Saturday night

(During this act the lights are lowered to denote the passing of 1½ hours)

ACT 3

Sunday morning

The Folkestone Theatre Company gratefully acknowledges the kind assistance of the following firms and individuals who loaned property and furniture for their production of "The Man Most Likely To . . ."

Curtain rails by First Class Furnishing Fabrics;

chaise longue by Folkestone & Hythe Operatic & Dramatic Society;
furniture by Miss P. Moore, Mr A. Bond, Mr G. Osmond Frith;
light fittings by Debenhams; crockery by Timothy Whites.

Champagne by courtesy of Moët & Chandon; lighters by Ronson

MICHAEL CLAUGHTON whose late father, Peter Cloughton, was a well known actor, went to the Guildford School of Acting for two years, where he won the Shakespeare Prize. His first professional engagement was at Watford Palace Theatre, followed by engagements with the Meadow Players at the Oxford Playhouse, a season at the Connaught Theatre, Worthing and repertory at Swansea, Croydon, Brighton and Southampton. He worked with the BBC Radio Repertory Company and has just finished writing his third full length play. Some of the more notable parts he has played have been Emcee in CABARET, Jud Fry in OKLAHOMA, Dr Sloper in THE HEIRESS, Felix in THE OWL AND THE PUSSYCAT, the Priest in RASHOMON, Solony in THREE SISTERS and Shylock in THE MERCHANT OF VENICE. This is Michael's fourth season at the Leas Pavilion Theatre. He was the author of the 1980 Christmas play for children, THE GREEN FINGERED GOBLIN and also THE BOUNDARY, which was performed at the Leas Pavilion Theatre at the end of last Summer season.

ELIZABETH STEPHENS began her career with the Leatherhead Repertory Company. She spent five years at the Arts Theatre, Belfast, followed by seasons with Sid James and Les Dawson. She has just completed a tour of MURDER AT THE VICARAGE and in June will be going to Scotland for her second season at the Civic Theatre, Ayr.

JAMES CHARLES started his career in young people's theatre with the Spectrum Theatre Company before moving into repertory at Cheltenham, Chester and Chichester via a Summer on the Edinburgh

Festival Fringe. Roles in repertory included appearances in A WOMAN OF NO IMPORTANCE by Oscar Wilde and LOOK AFTER LULU by Noel Coward. He then did a lengthy season at the Donovan Maule Theatre in Nairobi, including leading roles in SLEUTH, REBECCA, JOSEPH AND THE AMAZING TECHNICOLOUR DREAMCOAT and HOW THE OTHER HALF LOVES; also Bob Taylor in the premiere of Royce Ryton's play COCKTAILS FOR THE MINISTER at the Overground, Kingston. Television appearances include Captain Walcott in ESCAPE FROM STALAG LUFT 112B, Captain of the Guard in GUY FAWKES and the railway buff in WHERE WAS I? for the "Shoestring" series for BBC and the Detective Constable in THE CHELSEA MURDERS, roles in HAZELL, THE TOMORROW PEOPLE and LONDON BELONGS TO ME for Thames Television. James also appeared in an independent film FACE TYPEFACE TYPE, produced and directed by Paul Krebs in 1982. His most recent repertory appearances were at the Civic Theatre, Ayr for the 1981 season in ABIGAIL'S PARTY, TWO DOZEN RED ROSES, CONFUSIONS, SUDDENLY AT HOME, THE PRICE and GHOSTS.

STEPHAN LE MARCHAND

graduated with honours in English and Theatre Studies at the University of Warwick in 1979. He then trained at the Bristol Old Vic Theatre School where his parts included Grandier in THE DEVILS, Marlowe in SHE STOOPS TO CONQUER and Gad (a brother) in JOSEPH AND THE AMAZING TECHNICOLOUR DREAMCOAT. His first professional appearance was at the Leas Pavilion Theatre in last year's Christmas production and since then he has appeared at the Bristol Old Vic in AN ENEMY OF THE PEOPLE and GOING HOME. He also played Sir Christopher Wren in HTV's production of INTO THE LABYRINTH.

FREE EXHIBITION OPEN TO THE PUBLIC

Mon - Thurs & Sat 10 - 1 & 2 - 5p.m.

Fri 10 - 1, Sun 2.30 - 5p.m.

Until APRIL 25th

HUGO SIMBURG 1873-1917 First exhibition in this country of this major Finnish Artist

ARTS CENTRE

NEW METROPOLE

THE LEAS, FOLKESTONE

TEL: 55070

Booking through The Gallery Secretary at the above address

LIVE EVENTS PROGRAMME FOR APRIL/MAY

Wed 28th 7.30 Illustrated Music Lecture by Mark Deller

Wed 5th 7.30 Flute Recital: Helen Duffy

Thurs 6th 7.00 Illustrated Lecture 'The Nature of Victorian Gothic' by Dr. Jane Gledhill

Fri 7th 7.30 Recital: The Deller Consort 'Music in Tudor & Stuart England'

Sat 8th 7.30 Youth Concert: Music, Drama, Poetry, Folk & Rock

JANE BENNETT was born in Nigeria where she spent her early childhood. On her return to England she received her education in Hampshire before obtaining a place at the Webber Douglas Academy of Dramatic Art where she trained for three years, appearing as Viola in TWELFTH NIGHT, Mary McGregor in THE PRIME OF MISS JEAN BRODIE amongst other roles. Subsequent experience included a short film for the BBC, publication of short stories and supervision of drama workshops for the Disabled.

FORTHCOMING ATTRACTIONS

Tuesday 27th April for two weeks

MOTIVE FOR MURDER by James Hannaway

Don't miss James Hannaway's sensational new thriller. Follow the plot as it weaves a tale of blackmail and intrigue leading to a devastating climax. Why was Elizabeth Barrows killed? Who is the strange lady who haunts the flat of Wallace Barrows? Is Andrew Creed all he seems to be . . ?

Tuesday 11th May for two weeks

LOOK BACK IN ANGER by John Osborne



THE LEAS PAVILION THEATRE RECOMMEND THE TIPSY PIGEON RESTAURANT, AND A SPECIAL THEATRE MEAL TICKET IS AVAILABLE FROM THE BOX OFFICE.

ENJOY GOOD FOOD AND WINE OF THE HIGHEST QUALITY AT THE TIPSY PIGEON RESTAURANT

THE TIPSY PIGEON

3 West Terrace, Folkestone, Kent
Telephone: (0303) 51771 - 60536



DINNER / THEATRE / SWEET, COFFEE
TAXI TAXI BRANDY

WHY NOT TRY OUR COMPLETE PACKAGE
NEXT TIME - AT A REASONABLE RATE TOO

The Garden House Hotel will make your evening one of style and flair. It's like going 'Off Broadway' or 'A Night on Piccadilly', only in Folkestone. No fuss, we do it all, in an irresistible package:

Starter
Main Course
Taxi to Theatre
Choice Seat at the Show
Taxi back to the Garden House
Sweet
Coffee and Brandy

ALL FOR £7.95



Advance bookings through the
Garden House Hotel only.
Give us a ring and try it.

Garden House Hotel, Sandgate Road,
Folkestone. Tel. 52278



THE WORKBASKET

For personal service

Knitting Wool Specialists Patons & Baldwins, Jaeger, Sirdar, Emu, etc.

SPECIAL SELECTION OF FANCY JEWELLERY

16a Cheriton Place Folkestone (near Sainsburys) Tel 52802



Publishers of the
FOLKESTONE HERALD
DOVER EXPRESS
and
SOUTH KENT GAZETTE
SERIES

—oOo—
Wish artistes and audience
at the Leas Pavilion
a very enjoyable evening

CRAMPTON CONSTRUCTION LTD.

95A Canterbury Road
Hawkinge, Folkestone

A complete building service from planning to
completion also

JACK'S DIY HOMECARE CENTRE

Timber, Wallpapers, Paints, Quality Tools,
General Hardware (Hire or Sales)

Building Materials, Garden Tools, Growbags,
Peat, Compost, etc.

FREE DELIVERY

Tel: Hawkinge 2204

FOLKESTONE THEATRE COMPANY LIMITED

(Registered as a Charity)
Board of Trustee Directors:
THE RT. HON. THE LORD BRABOURNE
CLLR. JOHN JACQUES
CLLR. IVY ALLAN
CHARLES VANCE, Esq. F.R.S.A
THE HON. MRS. IMOGEN VANCE
Ex Officio:

The Chairman of the Folkestone and Hythe
Hotels and Catering Association
Counsellor: PETER CARPENTER, Esq.
Director, South East Arts Association

The Folkestone Theatre Company acknow-
ledges with thanks the financial assistance of
Shepway District Council.

The Folkestone Theatre Company does
NOT receive any financial assistance from the
Arts Council of Great Britain or the South East
Arts Association. It is unique in that it receives
no Central Government funding, unlike any
other regional theatre in Kent, Sussex or
Surrey.

Artistic Director Administrator
CHARLES VANCE

Director of Productions
IMOGEN MOYNIHAN

Production Assistant
BRIANNE MANKTELOW
Box Office VERA BURROWS, LEE HOWES,
HILARY MURRAY PEARCE

Bar and Catering Manageress
VALERIE HOGREN

Designer ADRIAN SMITH
Design Assistant JACKIE VANCE

Resident Stage Management
SANDRA WYNNNE

STEPHAN LE MARCHAND

JANE BENNETT

THERESA ROBERTSON

Lighting JOHN CHERITON

MAILING LIST

The Theatre regularly publishes a brochure
with the fullest details of forthcoming pro-
grammes and details of booking arrangements
and special attractions. For an annual subscrip-
tion of only £1.1 to cover the cost of postage etc.,
we will add your name to our mailing list and
so will ensure you have your Theatre
programme as soon as it is published. In
addition, as a subscriber to the mailing list you
will receive your copy of the Theatre
newspaper each quarter on the day it is
published direct to your own home. Please

send your name together with your £2 to
Brienne Manktelow, Production Assistant,
Leas Pavilion Theatre and she will do the rest.

THEATRE SHOP

For some years now the Theatre has
operated a Gift Shop with the assistance of
members of the Theatre Supporters' Club. It
was always our ambition to expand the scope
of the Shop and, hopefully one day, make it a
mecca for those looking for that very special
gift or souvenir.

There is a fascinating range of gifts at all
prices and you are cordially invited to browse
in the shop any time you are passing without
any obligation to buy. The shop continues to
be manned by loyal supporters of the Theatre
who give their time unstintingly to help the
Theatre and we assure you that nobody will
impertune you to buy while you enjoy looking
at the wide range of goods available.

We hope you will enjoy your visit to the shop
and that you will come to look on it as the ideal
place to buy that ideal gift.

THEATRE LECTURES AND COMMUNITY SERVICE

As a theatre unit we have a skilled team of
professional specialists who can be available to
give lectures to study groups and schools on
design, stage management and the theatre
generally. In this whole field of educational
theatre the Administrator will always be
pleased to hear from schools and other groups
who would like to arrange a visit either to their
school or at the theatre.

Many local societies and clubs invite our
artistic director, Charles Vance, to talk to their
members about his wide theatre experience in
all parts of the world. Although the demands
on his time professionally can be heavy,
nonetheless he is always happy to visit such
groups or to speak at functions when time
permits. It is recorded in "Who's Who" that he

has given over 300 talks on theatre throughout
the world. If you would like him to speak at
your function why not have a word with his
Production Assistant on Folkestone 59097 or
drop her a note. Whether it's a visit to a
Women's Institute or responding to the toast of
"The Guests" at a public function he has been
a sought-after speaker for many years
and he makes no charge for his services!!

COSTUME HIRE

Because of public demand in the Shepway
area, the Theatre now operates its own
costume hire service for both theatrical or
fancy dress functions. We have a selection of
costumes for all occasions. So next time you
get an invitation to a fancy dress party or
your dramatic group is putting on a produc-
tion don't despair - come along to the
Theatre for friendly and helpful advice. No
request too large or too small.

We'll do our very best to ensure you go
away satisfied.

THEATRE POSTCARDS

The majority of major theatres in the regions
now have their own special postcards, and
many theatregoers collect these from their
visits to theatres not only in England but around
the world.

Following our redecoration of the auditorium
we invited Bennett Publications, the postcard
specialists, to produce two postcards for us.
These are now on sale in the Theatre Shop and
at the Box Office and make ideal souvenirs of
your visit to the theatre or, indeed a "holiday
card" for visitors on holiday in Shepway.

The first of these cards shows the unique
Edwardian auditorium looking from the stage
to the rear of the theatre, and the other is
photographed from the side balcony looking
towards the stage. The cards are priced at 8p
each and, we hope you will agree, capture the
special atmosphere of the Leas Pavilion
Theatre.

THEATRE SUPPORTERS' CLUB

The most important function of the Theatre Supporters' Club is to provide a strong backbone of support for the Theatre and build up a social ambience for those in the community with a common love of the theatre.

So if you, like us, are keen on the Theatre and consider Folkestone lucky to have one, then do please join the Club. We want to regard you as representing typical public reaction and shall, therefore, be most interested to listen to your comments on all our productions. A strong Theatre Club will ensure a strong future for the Theatre; a strong Theatre Club will have an important voice in the future plans for the Theatre.

We see the role of the Club member growing as the Folkestone Theatre Company itself grows. We hope members will help in the Theatre's publicity campaigns; we hope we might, like so many of the regional theatres, get Club membership assistance in providing voluntary stewards at every performance.

This is what we want from you. In return, of course, we will provide any extra form of entertainment you may desire. The Club has its own elected Committee and you just let them know what you would like. Will you make the Club strong by becoming a member? It will cost you £1.50 a year to cover postage. But we don't want your money - WE WANT YOU!!

To: THEATRE SUPPORTERS CLUB, Folkestone Theatre Company.

Leas Pavilion Theatre, The Leas, Folkestone.
Enclosed please find my subscription of £1.50. Please enrol me as a member of the Club and send my Membership Card and Newsheet in the enclosed stamped addressed envelope.

Name

Address

CONFERENCES

Our seating capacity is just under 400 and we can fully accommodate the conference requirements of smaller groups. Already a number of major conference organisers are using the theatre outside performance times, and our technical staff can arrange the usual facilities for slides, microphones, etc. Our prime location, with the principal hotels within walking distance, will give your meeting or conference the ideal ambience and resources in 1981. If you are interested and would like to discuss your projected conference in detail please telephone or write to the Administrator (his special telephone line is 0303 59097) and he will be pleased to make an appointment to meet you.

THEATRE PUBLICITY

In addition to regular advertisements in the Press, the theatre publicises its activities on brochures and display cards and posters. We are always anxious to make our activities known to a wider public, and perhaps YOU can help us.

If you have a shop, or are secretary to a club or public hall, would you be willing to arrange to display one of our cards or posters? If you would, then just leave your name at the Box Office or give us a ring and we'll see that it is delivered to you regularly.....and MANY THANKS.

LEAS CLIFF HALL - FOLKESTONE

GENERAL ENQUIRIES TELEPHONE 54695 BOX OFFICE TELEPHONE 53193
COMMENCING 19th JUNE UNTIL 2nd OCTOBER. TUESDAYS TO SATURDAYS AT 8pm

PETER GOODWRIGHT IN "TOP OF THE TOWN"

WITH
ROBERT MARLOWE AND NINA BROWN
DIANE AND JULIAN
FREDA FARNWORTH GRAHAM TREW
THE TOP OF THE TOWN DANCERS

Seats at tables in Cabaret style,
Waitress service throughout evening
BASKET MEALS AVAILABLE

TICKETS £2.80, £2.50, £2.20, CHILDREN/O.A.P.'S 50p
REDUCTION ON EACH SEAT PRICE

ATTRACTIVE RATES OFFERED
TO GROUP ORGANISERS



CHANNEL WOODCRAFT LTD

ESTABLISHED 1927

TRADESMAN OR HANDYMAN

VISIT OUR



TIMBER : MOULDINGS : DOORS : WINDOWS : LININGS
STAIRS : PLYWOOD : HARDBOARD : GYPROC : FIBREGLASS
PAINTS : IRONMONGERY : TOOLS : SCREWS : NAILS

CHANNEL WOODCRAFT LTD

ESTABLISHED 1927

TIMBER MERCHANTS AND JOINERY SPECIALISTS

Bowles Well Gardens, (Off Dover Rd) Folkestone Telephone: 55231

Why not pop in to

The Leas Bar

Carlton Hotel The Leas, Folkestone.

before or after the show

200 yards from the theatre.

FRANCE AND
BACK
IS £4.50
WITH ME!

This summer P&O Ferries are offering a wide range of superb Mini-Jaunts at unbeatably low prices. Take a Mini-Cruise for only £4.50, or spend up to 18 hours ashore in Boulogne on our 'Cheepie' excursion from £6.50. There are lots more offers in our Mini-Jaunt brochure. For full details ring:
Dover (0304) 203399.
London (01) 623 1505.
Or see a travel agent.



P&O Ferries

Dover-Boulogne Southampton-Le Havre

A GREAT DEAL FROM A GREAT COMPANY.