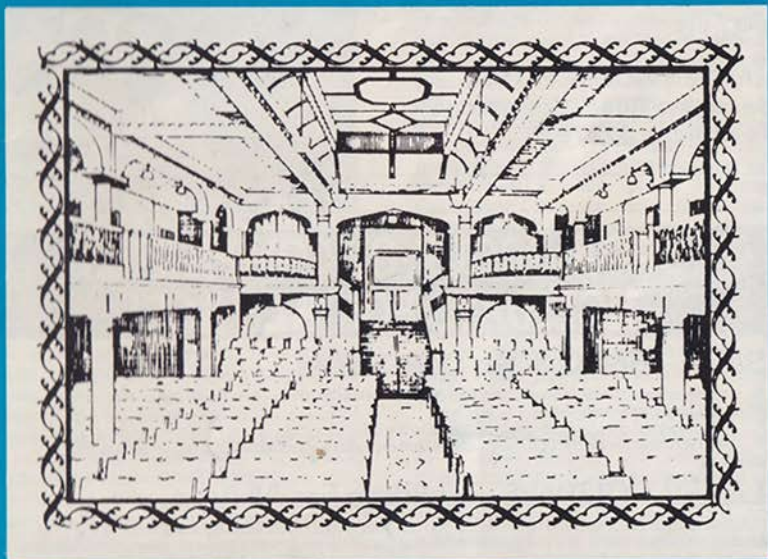


**Folkestone
Playhouse**
at the
**Leas Pavilion
Theatre**



Charles Vance

presents

1983 REPERTORY SEASON

PROGRAMME



4-COURSE DINNER & THEATRE TICKET

*Why not try our complete package next time
- at a reasonable rate too!*

The Garden House Hotel will make your evening one of style and flair. It's like going 'Off Broadway' or 'A Night on Piccadilly', only in Folkestone. No fuss, we do it all, in an irresistible package:

**Fruit Juice, Soup of the Day, Main Course, Sweet,
Choice Seat at the Show - ALL FOR JUST £7.95**

Advance bookings through the Garden House Hotel or the Theatre. Give us a ring and try it.

GARDEN HOUSE HOTEL
Sandgate Road, Folkestone
Telephone 52278



SAGA GROUP OF COMPANIES -HOLIDAYS FOR ALL AGES

SAGA - Holidays For Over-Sixties

An exciting range of holidays from 4 days to 6 months choose from resorts at home and abroad or from dozens of ocean and river cruises.

Holidays from only £64 per week full board in the UK.

AND you have the benefit of 30 years' specialised experience, together with the security of a public company.

LAKER HOLIDAYS - Holidays For All Ages

Holidays abroad in Europe, and North Africa. You can travel by air, cruise leisurely along some of the most famous of Europe's rivers, take an Express coach that will whisk you across Europe or enjoy a more leisurely coach journey to your destination.

Holidays from only £79 per week.

TAKE FIVE - Self-Catering Holidays For All Ages

An exciting and original programme of holidays for all ages in the UK and Europe. Take Five offers the freedom of a self-catering, self-drive holiday and the organisation and safeguards which only a reliable holiday company can provide.

Holidays from only £19 per person per week in the UK (based on a group of 6).

For full details of any or all of these holidays simply write or call in to: 119 Sandgate Road, Folkestone. Saga, Take Five and Laker are part of the established Saga group and all are local companies. If you would like to discuss your holiday requirements you are more than welcome to visit us. The office is open from 9 am to 5 pm Mon - Fri and until 1 pm on Saturdays.

Charles Vance welcomes you to the Leas Pavilion Theatre



(Photograph by courtesy of Folkestone Herald)

Dear Theatregoer,

Once again it is my privilege to welcome you to tonight's performance at the Leas Pavilion Theatre. This is our seventh season in Folkestone since I took over the lease in 1976 and it is the fifty-sixth consecutive season of repertory in this beautiful old theatre.

Many of you will have read in the press of changes which have taken place since our last season and, in particular, that I have dedicated the lease of the Theatre to the new Folkestone Playhouse Ltd, so that the future of repertory in Shepway will be assured long after I have gone.

We are particularly indebted to Shepway District Council who, in recognising the major role which the Theatre plays in the community, has given us substantially increased grant aid to ensure the future of repertory in Folkestone. This is great encouragement and there is no doubt that our unique cliff-top repertory can go into the future with considerable confidence.

But inevitably, like all Theatres, we are beset by the need to make improvements

with limited financial resources. It was for this reason, during our eightieth birthday year, we launched our £80,000 Appeal. This has got off to a good start, but we are still in need of substantial contributions if we are to be able to develop the Theatre as we would wish during the last two decades of this century. Elsewhere in the programme are details about the Appeal and we sincerely trust you will feel able to give us even the most modest contribution which will play its own part in helping us to reach our target.

A major innovation this year, which will also extend the length of the season, is the advent of our Village Drama Festival, which will be a competitive event to be held in the last two weeks of October. Again, elsewhere in the programme, there are some details about the Festival, and village drama clubs throughout the Shepway district are invited to contact me personally about the possibility of their club taking part in the competition. We are deeply indebted to Councillors Malcolm and Ivy Allan for donating the Allan Cup for the winning club and to South Kent Newspapers for awarding a trophy for the best contribution by youth in the Festival.

We have a very active Youth Drama Group which is run by Geoff Cox and I know he will always be keen to hear from young people eager to join the group, which meets every Sunday.

We have a number of ambitious plans for later on in the season, including the creation of a small touring unit who will take professional theatre out to the smaller towns in the Shepway district so that those who find it difficult to travel to Folkestone can take advantage of visits from their own Shepway repertory company.

Our Theatre Supporters' Club continues to grow apace and, again, elsewhere in the programme you will find details of membership - a strong supporters' club strengthens the foundation of any theatre and if you are not already a member why not get in touch with their secretary and take a more active part in the Theatre's life.

Once again, I wish you very happy theatregoing.

CATERING ARRANGEMENTS

Our PLAYBILL CAFE continues to be a popular meeting place, not only for theatregoers, but holidaymakers and residents alike, and during the season it is open from 10.00am until the last interval. As regular theatregoers know, we serve tea, coffee and soft drinks and provide, at very reasonable prices, a service of sandwiches and salads, all of which are freshly made to order. We have an exclusive range of home-made cakes which are specially baked by friends of the Theatre and we have regular visitors just for that.

A wide range of Walls ice cream specialities are always on sale in the cafe and, of course, during the intervals of theatre performances.

Our FULLY LICENSED BAR at the rear of the stalls is open every evening from half an hour before the performance and during the intervals. For your greater comfort, at the same time, why not order your interval drinks before the performance and they will then be waiting for you without delay when you go to the bar.

If you are planning a party visit to the Theatre, Mrs Valerie Hogben, our Catering Manageress, will always be pleased to discuss with you special arrangements for catering for your party, either with the service of light refreshments or drinks or, indeed, a small buffet meal before or after the show.

Whatever the needs of your party, be it for two or two hundred, Mrs Hogben will always be pleased to hear from you and help you with the catering, which will make your visit to our Theatre even more memorable.

COMBINED THEATRE AND DINNER TICKET

In addition to our own 'in house' service, which is limited by the size of the Theatre, we have, once again, arranged a combined theatre and dinner ticket to give patrons a complete evening out at a fixed price. The scheme was very successfully launched three years ago and has accelerated in popularity.

This year we have got together with the GARDEN HOUSE HOTEL and for £7.95 patrons can enjoy a splendid four-course dinner and the evening's entertainment at the Theatre. The ticket can be booked at the Garden House Hotel or here at the Theatre.

The combined theatre and dinner ticket also makes a splendid gift and many

theatregoers have been giving them as birthday and wedding anniversary presents to family and friends. We can arrange this in a way whereby the gift voucher can be given to its recipient and they themselves can select the production and the evening when they would like to use it. Do not hesitate to contact Brianne Manktelow on (0303) 59097, who will be happy to give you further details of this gift token arrangement.

The Garden House Hotel, in their advertisement in this programme, give details of their special menu and we are confident you will find it very attractive.

FOLKESTONE PLAYHOUSE LIMITED

(Registered as a Charity, No. 276419)

Board of Trustee Directors:

Cllr. JOHN JACQUES
Cllr. MRS IVY ALLAN
Mr COLIN HEMSLEY
Major C E A HOLLOWAY, Hotels & Catering Association
Mr IAN HEDGES
Mr JEREMY GAGAN
Mr CHARLES VANCE, Chairman
The Hon. Mrs IMOGEN VANCE and representatives of Shepway District Council.

The Folkestone Playhouse Ltd acknowledges with thanks the financial assistance of Shepway District Council.

Artistic Director / Administrator

CHARLES VANCE
Associated Producer
JEREMY GAGAN

Director of Productions

IMOGEN MOYNIHAN
Production Assistant
BRIANNE MANKTELOW

Box Office

VERA BURROWS, LEE HOWES,
HILARY MURRAY PEARCE
Bar and Catering Manageress
VALERIE HOGBEN

Designer

GEOFF STANFIELD

Lighting Designer

GEOFF COX

Design Assistant

MICHAEL POLLARD

Resident Stage Management

THERESA ROBERTSON

IAN McFARLANE

PETINA HAPGOOD

There's much more happening at Ford in 1983

By the end of May Ford will have launched no less than nine new models and special edition cars. Not bad going for five months work.

First there's the new special edition Fiesta Quartz, a fun car if ever there was one.

Then there's a new 5 door Escort Estate and 1.6 Escort Automatic.



The Sierra story has only just begun. Have you seen the new Sierra Estate that handles like the saloon. (And on the way is the sensational Sierra XR4i).

Three exciting new developments have taken place with the Capri. The 2.8 litre injection now has a 5-speed gearbox. And many worthwhile features (like a tilting/sliding sunroof) have been added to the 1.6LS and 2.0S: while the LS and S models have been reduced in price.

On the Granada front Ford have recently introduced a fifth overdrive cruising gear and a 2.5 litre diesel model.

But don't just read about all these cars.

Come and see for yourself.

See what Ford have been up to, in our showrooms.



PEACOCKS

OF SOUTH KENT LTD

MAIN DEALER FOORD ROAD NORTH, FOLKESTONE, KENT CT19 5AA
Telephone Folkestone (0303) 41234-8

Ford gives you more.



Near Hythe Kent

LYMPNE CASTLE

Open daily
May to September
10.30am to 6.00pm

THE VENUE FOR GOOD FOOD

La Tavernetta Restaurant

ESTABLISHED SINCE 1965

continues to maintain the very high standards for which it is renowned:
WIDE CHOICE OF A LA CARTE OR SET LUNCHEON MENU, SERVED MONDAY TO FRIDAY
WEDDING PARTIES CATERED FOR - LET US QUOTE YOU FOR THAT SPECIAL OCCASION!

Open 12-2.30pm, 6-10.30pm, closed Sunday

Leaside Court, Clifton Gdns, Folkestone Tel 54955 & 55044

LEAS CLIFF HALL, FOLKESTONE

General Enquiries - Telephone 54695 Box Office - Telephone 53193

PRESENTING FOR THE 1983 SEASON
Commencing Sat. 9th July-Sat. 8th Oct.
Tuesday-Saturday at 8.00pm

FRANCIS GOLIGHTLY in association with
SHEPWAY DISTRICT COUNCIL present

HARRY WORTH in CASCADE 83

with

THE MOSAICS EVANS & KANE
BARNYARD & RACKSTRAW
TONI MCKENNA ANTHONY BILTON
THE CASCADE DANCERS
PETE BROWN SOUND

Tickets: £3.20, £2.90, £2.50

(Reduced by 50p for children and senior citizens Tue-Fri)
ATTRACTIVE RATES FOR GROUP ORGANISERS



DATES FOR YOUR DIARY:

12th June Gilbert & Sullivan for all. 26th June Lester Ferguson. 3rd July Vince Hill.
17th July The Spinners. 24th July Les Dawson. 6th August Val Doonican.
14th August Danny La Rue. 28th August Tommy Cooper. 4th September Max Bygraves.
11th September Syd Lawrence. 18th September Jim Davidson. 25th September Lenny Henry.

Every Monday for the Season (commencing Mon. 30th May, except 13th, 20th June, 4th July)

SONGS TO REMEMBER

MARY ILLING DAVID WINNARD and GUESTS

Tickets: £2.00, £1.70, £1.50

LEAS PAVILION THEATRE FOLKESTONE
Box Office Telephone 52466

THE FOLKESTONE PLAYHOUSE PRESENTS
Summer Repertoire Season 1983

TAKING STEPS

by Alan Ayckbourn

Directed by
MICHAEL CLAUGHTON

Designed by
GEOFF STANFIELD

In the interests of your safety and comfort, smoking is not permitted in the auditorium and the use of cameras and tape recorders is strictly forbidden.

OCLEE

FOR FINE QUALITY JEWELLERY

35 Sandgate Road, Folkestone

TAKING STEPS

by Alan Ayckbourn

CAST

(in order of appearance)

| | |
|-----------------------------------|-----------------|
| Elizabeth | SARAH VERNON |
| Mark, her brother | ROBERT ARNOLD |
| Tristram, a solicitor | RICHARD KETTLES |
| Roland, Elizabeth's husband | HUGO MYATT |
| Leslie, a builder | SIMON JAMES |
| Kitty, Mark's fiancée | PETINA HAPGOOD |

Directed by MICHAEL CLAUGHTON

Designed by GEOFF STANFIELD

The action of the play takes place in The Pines; the attic, the bedroom, the lounge and the linking stairs and passageways. Time: the present.

ACT 1
Friday night.

ACT 2
Saturday morning.

The Folkestone Playhouse Company gratefully acknowledges the kind assistance of the following firms and individuals who loaned property and furniture for their production of TAKING STEPS: furniture, blanket and glasses by The Executive Club; make-up bag, umbrellas and two table lamps by F. W. Woolworth PLC; nest of tables and bucket by Eureka; dressing table stool by Newmann & Sons (Furnishers) Ltd; suitcase and glass lamps by Help The Aged; champagne by Moët and Chandon; Mr Kettles' raincoat by G. A. Dunn & Co; stool by Courts (Furnishers) Ltd.

The Folkestone Playhouse Company gratefully acknowledges the kind assistance of Cllr. Michael Stainer in providing rehearsal facilities at The Grand for this production of Taking Steps.

Mackeson Stout for this production of Taking Steps supplied by Whitbread Fremlins.
Matching pyjamas for this production kindly loaned by Channel Theatre Company.

Tights by Pretty Polly Wardrobe care by Persil Automatic

Terrace floral display generously donated by The New Folkestone Society.

Cleaning services and maintenance of the Leas Pavilion Theatre is carried out by Brompton Cleaning Services - (0634) 811782.

Bob & Gene
Hugo Myatt
HUGO MYATT has been in theatre for seventeen years. Not only has he worked as an actor, but he is well known for his pantomime villains, having played in thirteen consecutive pantomimes, and this year he will be seen as Sheriff of Nottingham in *Babes in the Wood* at Manchester. He has also specialised as Chairman of *Music Hall* with six seasons at the City Varieties, Leeds, to his credit. In repertory he has worked all over the country and played in over forty productions, this being the second occasion he has worked for Charles Vance. Hugo's recent television appearances include *Tales of the Unexpected* for Anglia Television, *Disaster at Thorpe* for BBC Television, *Out of the Conflict* and *Stroud for a Nightingale*, both also for Anglia Television.

Margaret
Bob
SARAH VERNON comes from a theatrical family and was trained at the Webber Douglas Academy. Rep work includes the parts of Ruth in *Table Manners*, Freda in *Dangerous Corner*, Ida in *See How They Run* and Gypsy in *The Beaux Stratagem* at such places as Bromley, Southwold and Weston-Super-Mare. In addition to this she has toured the country with a number of productions including *Rattle of a Simple Man*, *Forty Love* and *Sink or Slim* with Windsor Davies. She has recently been seen as Emily Sandford in the BBC's *The Stanfield Hall Murders*. Sarah is married to actor Roy Heather and lives in Richmond.

Best wishes
RICHARD KETTLES trained at the Guildhall School of Music and Drama and has had extensive experience in all branches

of theatre. Last season he was leading man in repertory at the Grand Theatre, Swansea, and he has also played a season in repertory at the Playhouse Theatre, Buxton, and the Marlow Theatre, Canterbury. Richard has also appeared in two national tours of *My Cousin Rachel* and *A Murder Has Been Announced*. He has played in pantomime at Walthamstow and Canterbury and was seen on television in *Girl on the Train*.

ROBERT ARNOLD trained at RADA for two years and from there went to Stratford-on-Avon for three seasons. Having completed his time at Stratford, Bob toured for the Arts Council playing *Romeo in Romeo and Juliet*. He appeared in *Ross* at the Haymarket, London, for two years and at the Royal Court in *Cock a Doodle Dandy* which went to the Edinburgh Festival. He took over the role of First Knight in *King Lear* at the Aldwych Theatre, which went on to play at the Sarah Bernhardt Theatre in Paris. In 1972 he did a season at the Marlowe Theatre, Canterbury, and his more notable roles were as Henry in *The Lion in Winter* and Gerald Popkiss in *Rookery Nook*. Bob has two major films to his credit, *Tunes of Glory* and *Sink the Bismark*. For eight years he played the role of Reg Swain in BBC TV's *Dixon of Dock Green* and his most recent television appearances have been roles in *Blake's Seven* and *Fawlty Towers*. Last year he spent six months at the Lyceum Theatre, Crewe, in repertory and also the pantomime *Dick Whittington*, and then returned to the Haymarket in London to appear in *Captain Brassbound's Conversion* with Michael Denison and Penelope Keith.

ARTS CENTRE

NEW METROPOLE

THE LEAS, FOLKESTONE

Telephone Folkestone 55070

KENT COUNTY COUNCIL EDUCATION COMMITTEE
GRANT AIDED BY SOUTH EAST ARTS ASSOCIATION

THE THIRD BIENNIAL KENT COUNTY COUNCIL EXHIBITION

A Major Retrospective - Henry Moore OM

2nd July to 28th August 1983

Works by the world's foremost living sculptor

Sculpture - Drawings - Graphics

Sales Area - Kent Artists - Watercolours/Drawings/Graphics and Jewellery, Art Cards, Poetry Books, etc.

Presences of Nature: Words and Images of the Lake District

24th September to 23rd October 1983

Free Public Exhibition open - Monday to Saturday 10am to 1pm and 2pm to 5pm, Sunday 2.30pm to 5.30pm

SIMON JAMES was born in the Potteries and trained at the Arts Educational School. He recently appeared in a season of plays for Stage 77 which included Old Time Music Hall, Theatre in Education, and Shakespeare. Simon has also appeared in fringe theatre in London. In 1982 he was featured in *The White Guards*, a BBC TV Play of the Month, and he played a young policeman in *Radio for TV South*. Last Christmas he appeared in the pantomime *Cinderella* at the Brent Civic Hall.

PETINA HAPGOOD trained at the Guildford School of Music and Drama and has appeared in repertory, children's theatre and pantomime. Last year she appeared on tour in *The Man Most Likely To* and *Taking Steps* and earlier this year she played Angie in *Abigail's Party*. Petina's television credits include appearances in *The Agatha Christie Hour* and *Bavarian Night*.

FORTHCOMING ATTRACTIONS

HOUSE GUEST by Francis Durbridge

Robert and Stella are horrified to learn their young son has been kidnapped, not for ransom as they are informed by the crook who visits them, but to force them to allow him to remain in their house for forty eight hours. Later two other men, supposedly police officers, arrive to reveal a murder has been committed. Soon, however, it is clear these two men are not what they would seem. Twist follows twist until the highly exciting and ingenious denouement.

WAIT UNTIL DARK by Frederick Knott

A drug-filled doll has disappeared from a London flat and Mike, Croker and Roat, three petty crooks, are anxious to find it. They work out a highly involved plot to compell the owners to give away the whereabouts of the doll. The owner's wife is blind and once the crooks have lured the husband away their task should be easy, particularly as the only companion left to her is a little girl who lives in the flat above - a little girl, moreover, of very uncertain fidelity. The crooks tell the blind woman a frightening story involving her husband's supposed infidelity and other complications. She, however, becomes suspicious using her ears to make up for what she lacks in her eyes. In the world of darkness she can be their equal and in a suspense-ridden climax she puts this to the test with unexpected terrifying results.

THE LEAS PAVILION THEATRE RECOMMEND THE GARDEN HOUSE HOTEL
AND A SPECIAL THEATRE MEAL TICKET IS AVAILABLE FROM THE BOX OFFICE

ENJOY GOOD FOOD AND WINE OF THE HIGHEST QUALITY
AT THE GARDEN HOUSE HOTEL RESTAURANT

THE GARDEN HOUSE HOTEL

SANDGATE ROAD, FOLKESTONE

Telephone 52278

Curtain up on

CONTINENTAL CAPERS from DOVER

by Townsend Thoresen

Scene I. Sail & Save.

Aboard a luxury ship crossing the Channel.
Get in on the act on a Sail & Save Cruise.
A super non-landing trip to the Continent with oodles
of duty-free bargains, Dahling!
£5.50 return.

Scene II. Popover.

In a boulevard café on the Continent.
Make your great break on a Popover from Dover.
with up to 18 hours in France or 8 hours in Belgium
From £7.50 return.

And introducing our long running success - **Coach Tours**. We've got the best day and extended day trips to the Continent. Prices start from only £13.00. Just ask your travel agent for details.
We cast off everyday and if you haven't a passport, don't despair! We'll give you an I.D. Card if you're a British or Irish citizen. So if you want to be part of the cast, see your travel agent first thing tomorrow.
Or contact Townsend Thoresen, Russell Street, Dover. Tel: (0304) 203388.

 **The European Ferries**
TOWNSEND THORESEN
We're with you all the way

WE WELCOME YOU TO BROWSE THROUGH OUR NEW RANGE
OF TOP QUALITY

- ☆ COATS
- ☆ SUITS
- ☆ DRESSES
- ☆ EVENING WEAR
- ☆ JEWELLERY
- ☆ SCARVES

New and 'near-new' stock and many model clothes

PANDORA'S BOX

(JUST A FEW MINUTES FROM THIS THEATRE)

Bouverie Road West (Shopping Parade) Folkestone Telephone 59266

Why not pop in to

The Leas Bar

Carlton Hotel, The Leas, Folkestone
before or after the show

200 yards from the Theatre

THEATRE LECTURES AND COMMUNITY SERVICE

As a theatre unit we have a skilled team of professional specialists who can be available to give lectures to study groups and schools on design, stage management, and theatre generally. In this whole field of educational theatre the Administrator will always be pleased to hear from schools and other groups who would like to arrange a visit either to their school or at the Theatre.

Many local societies and clubs invite our Artistic Director, Charles Vance, to talk to their members about his wide theatre experience in all parts of the world. Although the demands on his time professionally can be heavy, nonetheless he is always happy to visit such groups or to speak at functions when time permits. It is recorded in *Who's Who* that he has given over 300 talks on theatre throughout the world. If you would like him to speak at your function why not have a word with his Production Assistant on Folkestone 59097 or drop her a note. Whether it's a visit to a Women's Institute or responding to the toast of 'The Guests' at a public function - he has been a sought-after speaker for many years - and he makes no charge for his services!!

THEATRE APPEAL

In 1982 - the eightieth birthday year of the Leas Pavilion Theatre - we launched an appeal for £80,000 to secure a fund which would enable us to develop it during the last twenty years of this century and so preserve our unique Theatre.

The Appeal had an excellent start and a number of major companies have given us substantial sums to launch it, and many people have given us covenants over a number of years by which, of course, the Theatre receives further advantage - as does the donor - from the tax rebates which such covenants attract.

Throughout this year there will be a number of major fund-raising events in the social calendar of Shepway which, of course, will help swell the fund further, but it is YOUR support which will bring the success we need. Every contribution, however small, will be most gratefully received. The donations to the Appeal are not used for running the Theatre, but are lodged in a special bank account at Lloyds Bank in Folkestone to accumulate until we are able to undertake to improve our Theatre amenities.

CAN WE COUNT ON YOUR HELP? If you want any further information about the Appeal please do not hesitate to contact Charles Vance personally.

THEATRE SUPPORTERS' CLUB

The most important function of the Theatre Supporters' Club is to provide a strong backbone of support for the Theatre and build up a social ambience for those in the community with a common love of the theatre.

So if you, like us, are keen on the Theatre and consider Folkestone lucky to have one, then do please join the Club. We want to regard you as representing typical public reaction and shall, therefore, be most interested to listen to your comments on all our productions. A strong Theatre Club will ensure a strong future for the Theatre; a strong Theatre Club will have an important voice in the future plans for the Theatre.

The role of the Club member grows just as the Theatre Company grows and already the Leas Pavilion Theatre Supporters' Club plays a major role in helping with the publicity for the Folkestone Playhouse. As we said last year, we hope to see the Supporters' Club provide stewards at every performance and so play an integral role in the life of the Theatre and in welcoming its visitors.

Each new production opens on a Tuesday and that first night is Supporters' Club night, when members of the Club have the advantage of seeing the productions at half price and meeting with the cast after the show for a drink in the bar. In addition, during each year a number of visits are arranged as a day's outing to other theatres in the South and South East and altogether a very happy social ambience is built up for its members. For a modest £2.00 YOU can become a member and with one visit to an opening night of any production you will virtually have recovered the cost of your membership. The Theatre Company can only be as strong as its supporters - we want your support and hope you will become a member. The subscription in itself is unimportant and barely defrays the cost of the mailing and servicing of our members - it's not your money we want, it's your support.

To: THEATRE SUPPORTERS CLUB

Folkestone Theatre Company, Leas Pavilion Theatre, The Leas, Folkestone, Kent.
Enclosed please find my subscription of £2.00. Please enrol me as a member of the Club and send my membership card and newsheet in the enclosed stamped addressed envelope.

Name Address

BOOKING ARRANGEMENTS

The box office is open every day except Sundays, from 10.00am to 8.00pm except on those days when there is no performance, when the box office closes at 5.30pm. Mrs Vera Burrows, our Box Office Manageress, Miss Lee Howes or Mrs Hilary Murray Pearce will always be happy to give you their personal attention, whether you visit the box office or telephone them on 52466. We will always hold telephone bookings until half an hour before the performance on the day for which they are booked, but if you do have a long distance to travel, please advise the box office and they will be happy to arrange to hold your tickets until curtain up.

For those who live farther afield - and we have more and more patrons who travel considerable distances to see our productions - you can, of course, book by post (we do like you to send a stamped addressed envelope so we can send the tickets back to you) or you can take advantage of the conveniently placed ticket agencies which we have established throughout the region. We now have agencies in Ashford, Canterbury, Deal, Dover, Hythe, Margate and Tenterden and we assure you our agents will give you that same personal service which you would enjoy from our own box office team.

Our booking agents are as follows:
ASHFORD: Baldwins Travel Agency, 51 High Street. Telephone 25245.
Swinards, Bank Street. Telephone 34321.
DEAL: Fortune Tours, 96 High Street. Telephone 4665.
DOVER: Pickfords, 10 Worthington Street. Telephone 206273.
FOLKESTONE: Information Centre, Shopping Precinct. Biggs Travel, 22 Cheriton Place. Telephone 53055.
South East Tourist Board, Harbour Way.
HYTHE: Swinards, 26 High Street. Telephone 66558.
MARGATE: Biggs Travel, Marine Drive. Telephone 27563.
TENTERDEN: Swinards, 3 The Fairings. Telephone 2633.



Publishers of the
FOLKSTONE HERALD
DOVER EXPRESS
(Published every Friday)

and

SOUTH KENT GAZETTE
SERIES
(Published every Wednesday)

Wish artistes and audience
at the Leas Pavilion
a very enjoyable evening

For that pre- or ante- theatre
drink or meal try the

Clifton Hotel
FOLKESTONE

- just 5 minutes away from
this Theatre



A TRUST HOUSE FORTE HOTEL

Telephone
(0303) 41 231

SEASON TICKETS

We are re-introducing our Season Ticket Scheme whereby patrons have the opportunity of seeing any five plays in the season for only £10! This does not even require a season ticket holder to see every production – although, of course, we hope you will!!!

What a splendid gift these season tickets can make for theatregoers, and they can be enjoyed by the recipient for many months. They can also, at a modest cost, help to encourage non-theatregoers to get the theatre habit.

MAILING LIST

The Theatre regularly publishes a brochure with the fullest details of forthcoming programmes and details of booking arrangements and special attractions. For an annual subscription of only £2.00 to cover the cost of postage, etc, we will add your name to our mailing list and so will ensure you have your Theatre programme as soon as it is published. In addition, as a subscriber to the mailing list you will receive your copy of the Theatre newspaper each quarter on the day it is published direct to your own home. Please send your name together with your £2.00 to Brianne Manktelow, Production Assistant, Leas Pavilion Theatre, and she will do the rest.

THEATRE SHOP

For some years now the Theatre has operated a Gift Shop with the assistance of members of the Theatre Supporters' Club. It was always our ambition to expand the scope of the shop and, hopefully one day, make it a mecca for those looking for that very special gift or souvenir.

There is a fascinating range of gifts at all prices and you are cordially invited to browse in the shop any time you are passing, without any obligation to buy. The shop continues to be manned by loyal supporters of the Theatre who give their time unstintingly to help the Theatre, and we assure you that nobody will importune you to buy while you enjoy looking at the wide range of goods available.

We hope you will enjoy your visit to the shop and that you will come to look on it as the ideal place to buy that ideal gift.

VILLAGE DRAMA FESTIVAL

In October the Folkestone Playhouse will launch its first annual Village Drama Festival when ten village drama clubs will be invited to participate. Village drama clubs should make application to the Theatre to be considered for inclusion in the Festival and ten clubs will finally be selected to participate in the two weeks presentations at the Leas Pavilion Theatre.

The Festival will give village drama clubs the unique opportunity of presenting their plays with the full professional back-up of the Theatre and to a much wider audience and there are a number of major awards being made for the winning clubs. Councillors Malcolm and Ivy Allan have graciously donated the Allan Cup for the winning club and South Kent Newspapers are awarding a trophy for the best contribution by youth in the Festival.

During the first week of the Festival a different club will present its production each of the six nights and in the second week, from Monday to Thursday, the other four clubs will do likewise. Friday night will be adjudication night, when the awards will be announced and the clubs will receive their adjudication. The winning club will, as part of its 'prize', be invited to present their play on Saturday night and receive, in addition to their trophy, a percentage of the takings of the box office for that performance to help their club funds.

This promises to be a very exciting innovation in the theatre life of South East Kent and village drama club secretaries, whether from WI, churches or the villages themselves, are invited to get in touch with Charles Vance at the Theatre if they wish to be considered for inclusion in the competition.

THEATRE POSTCARDS

A pleasant souvenir of your visit to the Leas Pavilion Theatre is our theatre postcard. There are two different cards, each showing a different view of the interior and are modestly priced at 8p each. Theatres throughout the world have their own personal postcards which are collected by people from all walks of life. We hope you will be able to use our postcards, not only as keepsakes for yourselves, but to send as holiday postcards when writing to your friends.

Nearest thing to the wild!

FORT LYMPNE ZOO PARK near Hythe
TIGERS · LEOPARDS · CHEETAHS · BUFFALO · RHINO · ELEPHANTS etc
HISTORIC HOUSE & GARDENS · ALL IN MAGNIFICENT SETTING

Howlett's ZOO PARK Bekesbourne near Canterbury
GORILLAS · CHIMPANZEES · LEOPARDS · TIGERS · ELEPHANTS · WOLVES · BISON... and much more



This voucher entitles one adult to 50p reduction on inclusive admission to Howlett's or Fort Lympne when accompanied by at least one other adult paying full price. Open every day except Christmas Day.

50p OFF

Romney, Hythe & Dymchurch RAILWAY

So much to see,
So much to enjoy!

A super 'awayday' for all the family!

The Worlds Only
Miniature Main Line Steam Railway

Travel 14 miles across the historic Romney Marshes in steam hauled trains from Hythe to Dungeness via New Romney and Dymchurch.

Frequent trains daily in Spring, Summer and Autumn. Cafes, gift shops, car parks, model exhibition at New Romney.

For further details, Party Bookings, etc. write or telephone The Manager, R. H. & D. Railway, New Romney, Kent
Telephone New Romney (06793) 2353

CHANNEL WOODCRAFT LTD

ESTABLISHED 1927

TRADESMAN or HANDYMAN
VISIT OUR

WOODCRAFT CENTRE

TIMBER : MOULDINGS : DOORS : WINDOWS : VISTA uPVC WINDOW SYSTEM
LININGS : THERMATRUE SECURITY DOORS : STAIRS : PLYWOOD : HARDBOARD
GYPROC : FIBREGLASS : PAINTS : IRONMONGERY : TOOLS : SCREWS : NAILS

CHANNEL WOODCRAFT LTD

ESTABLISHED 1927

TIMBER MERCHANTS AND JOINERY SPECIALISTS

Bowles Well Gardens (off Dover Road), Folkestone Telephone 55231



WINTER GARDENS - MARGATE

TELEPHONE THANET (0843) 22785/21348

CHIEF ENTERTAINMENTS & ARTS OFFICER: PETER ROBERTS F.I.A.M.

THEATRE MANAGER: BOB BELL

THANET DISTRICT COUNCIL in association with BRIAN SPAIN MANAGEMENT presents

MARGATE'S 1983 Season of the Stars

THU. FRI. SAT. 28-29-30 JULY

JIM DAVIDSON

THU. FRI. SAT. 7-8-9 JULY

THE NOLANS

THU. FRI. SAT. 14-15-16 JULY

HINGE & BRACKET

THU. FRI. SAT. 21-22-23 JULY

DANNY LA RUE

THU. FRI. SAT. 11-12-13 AUG.

SAGHA DISTEL

THU. FRI. SAT.
4-5-6 AUG.

**MAX
BYGRAVES**

THU. FRI. SAT.
18-19-20 AUG.

LES DAWSON

THU. FRI. SAT. 25-26-27 AUG.

CHAS 'N' DAVE

THU. FRI. SAT. 1-2-3 SEP.

SHOWADDY WADDY

...and on Sundays...

- 19 JUNE FRANKIE VAUGHAN
- 26 JUNE LENNY HENRY
- 3 JULY BERNIE CLIFTON
- 10 JULY THE LENNIE BENNETT SHOW
- 17 JULY TED ROGERS
- 24 JULY THE BACHELORS
- 31 JULY JOE BROWN
- 7 AUG VAL DOONICAN
- 14 AUG MATT MONRO & SYD LAWRENCE
- 21 AUG JOE LONGTHORNE
- 28 AUG THE BARRON KNIGHTS
- 4 SEP THE KRANKIES

MAKE YOUR TELEPHONE
& PARTY
BOOKING NOW!

