

---

THE *NEW*  
LEAS  
PAVILLION  
THEATRE

---

1985  
**SUMMER SEASON  
PROGRAMME**

## June Brown



Very best wishes for your 1985 season. I am sorry I could not be with you on this occasion.

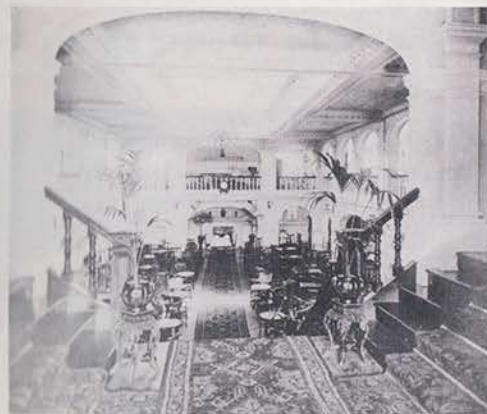
I look forward to seeing you all again very soon.  
From June Brown and her agents, Sarah Band Associates. Tel: 01 359 5136

---

## **The Leas Pavilion Theatre**

Originally built as a splendid Edwardian Tea Room for high class refreshments and dancing, the Leas Pavilion has been the home of live theatre in Folkestone since 1928. The tradition of repertory which was founded by James Grant Anderson has lasted in unbroken continuity for 57 years. This is a repertory record unequalled anywhere in the world. From 1929 - 1969 the halcyon days of the Leas Pavilion were under the aegis of Arthur Brough and his wife Elizabeth Addyman for an astonishing fortyone years. In the seventies that heritage was carried on by the late Richard Burnett of the Penguin Players and subsequently by Robert Howard and his family. Since 1976, Charles Vance has been the artistic director of the Leas Pavilion which for several years now has been run by a Theatre Charity Trust.

Many distinguished careers in Theatre began at the Leas Pavilion. The Hall of Fame includes: Michael Aldridge, Peter Barkworth, Jill Bennett, Joan Hickson, Noel Howlett, David Tomlinson and Peter Walter. Times change and the Arts nationally are under pressure to survive. Rising costs and lower grant aid are affecting every corner of culture. Live Theatre is essential to our social structure. It must meet the challenge of the 80's. For 1985 and onwards, Folkestone's own Theatre the NEW Leas Pavilion, will continue to provide culture in new ways, ever changing to meet the needs of our public.



**Help Emancipate  
the NEW  
Leas Pavilion**

# OCLEE

FOR FINE QUALITY JEWELLERY

35 Sandgate Road, Folkestone



Near Hythe Kent

# LYMPNE CASTLE

Open daily  
May to September  
10.30am to 6.00pm

ESTABLISHED SINCE 1965

## La Tavernetta Restaurant

For the best.....ITALIAN CUISINE

Romano and Staff continue to maintain the very high standards for which La Tavernetta is renowned:

WIDE CHOICE OF A LA CARTE OR SET LUNCHEON MENU, SERVED MONDAY TO FRIDAY  
WEDDING PARTIES CATERED FOR - LET US QUOTE YOU FOR THAT SPECIAL OCCASION!

Open 12-2.30pm, 6-10.30pm, closed Sunday

Leaside Court, Clifton Gdns, Folkestone Tel 54955 & 55044

## Spotlight on the Continent from Dover

Day Trips  
to Calais, Boulogne  
or Zeebrugge  
from £9 return

Non-  
landing Cruises  
from £7 return

60 Hour  
Mini-Breaks for  
foot passengers  
from £14.50 return

Next time you feel like a change of scene, get in on the Townsend Thoresen Continental Short Trips Act from Dover. The complete programme is in our Continental Refreshers brochure - at your ABTA Travel Agent or Townsend Thoresen, PO Box 12, Dover, Kent. Tel. (0304) 203388.

IT'S EASY GOING

# TOWNSEND THORESEN



Tuesday 25th June - Saturday 6th July

## THE GLASS MENAGERIE

by Tennessee Williams

Cast:

Tom..... Wyn Jones  
Laura..... Susan Tordoff  
Amanda..... Miranda Marshall  
The Gentleman Caller..... Michael Bott

The play directed by Charles Vance  
in association with Imogen Moynihan  
Settings designed by Michael Pollard  
Lighting designed by James McKee

Director's Note: Set in a run-down section of the Mid-Western City of St. Louis to-day and in the early thirties, "The Glass Menagerie" is only incidentally a "Southern" piece - as in Mrs. Wingfield's nostalgia for her youth in the Delta. Nor is it a pastiche of the thirties. It is primarily a play of the frustration of youth, and as such it is stateless and timeless.

Original Music composed by Paul Bowles  
Music, Sound effects and editing by Jack Bryant & Charles Vance

Time: The Present and the early 1930's  
Place: An Alley in St. Louis

Part 1

Preparation for a Gentleman Caller

Part 2

The Gentleman Calls



The Leas Pavilion Theatre gratefully acknowledges the kind assistance of the following firms and individuals who loaned properties and furniture for the production of THE GLASS MENAGERIE: Grand Hotel for the gramophone, M.P. Glasspole for chairs and mirror, Oclees for candelabra, Eureka for dustbin, Lindy Lou for kit bag, British Telecom for 'phone, The Lighting Boutique for light fittings, and everyone who so kindly gave their assistance on this production.



## ABOUT THE PLAY

In writing *The Glass Menagerie*, Tennessee Williams went some way towards exorcising the traumas of his tempestuous and wretched childhood, although the repercussions of his upbringing were to haunt him for the whole of his life. He was born at Columbus, Mississippi in 1911 and the play is largely auto-biographical, reflecting the strains and stresses of his family life. His mother, Edwina Dakin, was the beautiful daughter of an Episcopal Vicar. In 1907, this refined young woman married Cornelious Coffin "CC" Williams and later that year gave birth to a daughter, Rose. It was, however, an impossible marriage and within two years she was back at the Vicarage with "CC" visiting a few days a month. And so life went on until in 1918, the whole family moved to St. Louis. This was the first time that "CC" had co-habited with his young family and the following year a third child, Dakin, was born. But their changed circumstances brought no happiness to any of them. Edwina could not reconcile herself either to the straitened circumstances she found herself in, nor to her husband's excesses and retreated into a 'Daydream of Southern gentility'. Eventually in the 1950's, she had a nervous breakdown. The children, if anything, caught between their mother's excessive prudery and their father's indifference and drunken brutality, fared worse and were never able to successfully adapt to life.

In Tennessee's case, however, his writing provided an escape from the harsh actuality of his existence but his sister Rose to whom he was very close, re-acted by gradually withdrawing from reality into a world of her own and eventual madness. She was lobotomised in 1937. Tennessee never got over the guilt he felt at having survived the ordeal of his childhood relatively intact while his beloved sister, "the best of us all", had been destroyed by her experiences.

From 1921-31, Tennessee attended the University of Missouri where he became involved in playwriting, but it was not until 1943 while broke, exhausted and depressed trying to eke out a living in New York that he wrote *The Glass Menagerie* (originally, 'The Gentleman Caller'). In 1945 the play was a sensational success on Broadway and followed by *A Streetcar Named Desire* ensured that by the time he was 40 he was 'the richest and most famous playwright in America'.

'The Glass Menagerie' was first seen on the London stage in 1948, directed by John Guigud.

### THE DIRECTOR

In 1985 Charles Vance celebrates 25 years as Actor/Manager. He has written and directed Pantomimes, presented Repertory seasons in major theatres throughout the country and launched many post-London tours, ranging from *STOP THE WORLD I WANT TO GET OFF* to Terrence Rattigan's *IN PRAISE OF LOVE* and his current national tour of the West End Musical *MR CINDERS*. In 1976 he moved to the Leas Pavilion Theatre in Folkestone of which he is still Artistic Director. His numerous acting credits include Sir Thomas More in *A MAN FOR ALL SEASONS*, Archie Rice in *THE ENTERTAINER* and Maxim de Winter in *REBECCA*. Prominent in the world of theatre politics, he currently serves as Chairman of the Government's Standing Advisory Committee on Local Authority and the Theatre and Vice-Chairman of the Theatres Advisory Council. He was, for several years on many other theatre governing bodies. In the field of light entertainment, he appears regularly in the role of Chairman in Victorian Music Hall and recently revived his *JOLSON REVUE* which toured the U.K. and Australia.

Exhibitions of paintings, sculpture, original prints and craftwork. Craft shop and picture sales area.

Performance programme: chamber and jazz concerts, piano and guitar recitals, poetry readings, films, lecture and workshop programme.

For full details see copy of "What's on at the MET" available from the Gallery and public libraries or telephone Gallery Secretary on Folkestone 55070 Kent County Education Committee Grant Aided by South East Arts Association County Education Officer: Mr. B. Oatley BA

## CAST

### MIRANDA MARSHALL

After training at the Guildhall School of Music and Drama, Miranda Marshall began her career with the Abbey Players in a London season of plays. She has toured extensively, both here and abroad, enjoying success in theatre and TV in Norway. After working with many repertory companies, in particular for several years with the Arena Theatre in Birmingham, she did a long stint in television in classics such as *Dixon of Dock Green*, *Emergency Ward 10*, *Z Cars*, *Play for Today* etc., and viewers will have heard her voice on numerous TV commercials. In recent years she has worked mostly in the West End, appearing in *Cat Among The Pigeons*, *Birds of Paradise*, *Cause Celebre* and a very long run in *No Sex Please, We're British*. She has just completed a nationwide tour with Trevor Bannister, in *Who's Been Sleeping in My Bed*.

### WYN JONES

WYN JONES made his first professional appearance at the age of 13 in *Goodbye Mr Chips*, playing six generations of schoolboys and, while still at school, appeared in several plays for the B.B.C. He studied drama at University and his early repertory experience was at Torquay, Swansea and Westcliff, since when he has appeared in many theatres around the country. His appearances include roles in *A Streetcar Named Desire*, *Hamlet*, *Habeas Corpus* and *A Voyage Round My Father* and he was with *The Moustrap* at the St Martin's Theatre in London. He recently played Stafford T Wilkins in the national tour of Alan Ayckbourn's *Sisterly Feelings*. His most recent television appearance was in the Channel 4 film *Owain, Prince of Wales*. Wyn was a member of the 1981 and 1984 companies at the Leas Pavilion Theatre when his appearances included *Relatively Speaking*, *Stage Struck*, *Table Manners*, *A Taste of Honey* and *The Man*. Last season, he also directed *Don't Start Without Me*, *Out of the Crocodile* and *California Suite*.

### MICHAEL BOTT

MICHAEL was born in the Isle of Man and grew up near Banbury in Oxfordshire. On leaving school, he moved to London where he attended the Rose Bruford College of Speech and Drama, after which he gained his first professional experience in Jack Watling's Summer Theatre at Frinton, making his first appearance playing Arthur in *'Spring and Port Wine'*.

Since then, Michael has worked extensively in theatre, having worked at Colchester, East Grinstead, Malvern, Edinburgh, Birmingham, Newcastle, The Piccadilly and comedy theatres in London and also in various fringe theatre productions. He has appeared on television in an episode of *'Bergerac'*, *'London is Drowning'*, a B.B.C. *'Play for Today'*, and has made numerous T.V. commercials. His more recent appearances include Gordon in *'Dangerous Corner'* at Vienna's English Theatre and last year he found great success playing Mortimer in The Taunton Brewhouse Theatre's production of *'Arsenic and Old Lace'*. Michael is married to actress Sharon Baylis and they live in Balham with their two dogs.

**ARTS CENTRE**  
The Metropole  
The Leas Folkestone  
Kent Tel.0303 55070 *at the MET*



# FORTHCOMING ATTRACTIONS

July 9th - July 20th

## EDEN END by J.B. Priestley

Eden End, North of England, 1912. Wilfred Kirby, on leave from service in Africa, returns to his family. There is Sarah, his old nanny, his father, Dr. Kirby and Lilian, his sister who has been running the household since their mother's death. Suddenly, Stella, their elder sister, who left home against the wishes of the family to pursue an acting career, appears after years of silence. But her unexpected arrival is not her only surprise.....

JULY 23rd - AUGUST 3rd  
AUGUST 22nd - AUGUST 24th  
SEPTEMBER 2nd - SEPTEMBER 4th

## DEAD ON NINE by Jack Popplewell

Robert and Esmeralda Leigh rusticate in tempestuous comfort in their quiet Cornish Cottage. Their ten year old marriage is highly unsatisfactory because Robert is totally dependent on his wealthy wife. Having found consolation with his Secretary, Marion Dale, Robert begs his wife for a divorce which, although Esmeralda does not love Robert, she refuses to grant him. Determined to rid himself of his wife, Robert finds he may have to resort to desperate measures!



## SUSAN TORDOFF

SUSAN TORDOFF is an up and coming young actress, recently graduated from the Bristol Old Vic Theatre School but already an experienced and successful actress. Her appearances while still at Bristol include Portia in *The Merchant of Venice*, Helena in *A Midsummer Nights Dream* and Dolly in *The Threepenny Opera*. She was Cleopatra in BBC Radio's production of *Antony and Cleopatra* and also appeared in the musical *Oliver* at the Shanklin Theatre, Isle of Wight. The winner of the William Poel Memorial Prize, Susan was also selected to compete in the Carlton Hobbs Radio Award. Another aspect of Susan's talents - she's also a trained Nursery Nurse!



## RICHARD ALWYN

Richard Alwyn was born in South Wales in 1961. He was educated in Cardiff and entered the Theatre world in 1983 after obtaining a place at the Montview Theatre School in London. During a very successful three year course, he gave notable performances as Willy Loman in *Death of a Salesman*, Jimmy Porter in *Look Back in Anger*, Amos Hart in *Chicago* and also in the title roles of *Oedipus* and *Richard III*.



## The Leas Cliff Hall Folkestone

Kents Premier Entertainment Complex



For that very special night out, ensure that you book early for the Stars appearing this Summer in 'The Hall of Fame'

Wednesday 3rd July 7.30 p.m.

**RAMON VILLAR**  
and his *Flamenco Troupe of Dancers*  
Tickets £3.00 £2.50 £2.00

Wednesday 10th July 8.00 p.m.

**HERB MILLER ORCHESTRA** and his  
Tickets: £5.00 £4.50 £4.00

Sunday 14th July

The **BOB MONKHOUSE** Show  
Tickets: 6.00 p.m. £5.00 £4.50 £4.00  
8.30 p.m. £5.50 £5.00 £4.50

Sunday 21st July

The **JIMMY TARBUCK** Show  
Tickets: 6.00 p.m. £6.00 £5.50 £5.00  
8.30 p.m. £6.50 £5.00 £5.50

Friday 26th July 8.00 p.m.

**THE BARRON KNIGHTS**  
Tickets: £5.00 £4.50 £4.00

Sunday 28th July

**KEITH HARRIS**  
with *Orville and Friends* 50p off  
2.30 p.m. & 6.00 p.m. £5.00 £4.50 £4.00 Kids/O.A.P.s

**MAKE IT LIVE IN '85!**

All enquiries to: Box Office: Tel: 53193 General Office: Tel: 54695 Shepway District Council

**Leas Cliff Hall**

**Romney, Hythe & Dymchurch RAILWAY**

So much to see,  
So much to enjoy!

A super 'awayday' for all the family!

The Worlds Only

Miniature Main Line Steam Railway

Travel 14 miles across the historic Romney Marshes in steam hauled trains from Hythe to Dungeness via New Romney and Dymchurch.

Frequent trains daily in Spring, Summer and Autumn. Cafes, gift shops, car parks, model exhibition at New Romney.

For further details, Party Bookings, etc. write or telephone The Manager, R. H. & D. Railway, New Romney, Kent

Telephone New Romney (06796) 2353



**Graham**

Graham-Ford Limited

The Home Improvement and Building Materials Centre for Beautiful Bathrooms.

Quality Kitchens - Heating Supplies - Gutters & Pipes - Garage Doors - Paint .....and so much more

15/25 Dover Road, Folkestone TEL: 55411



**Bowles Well Gardens** (off Dover Road), Folkestone Telephone 55231

# It's only to France and with Sealink

With or without your car, enjoy a super day out (or longer) on the Continent, for far less than you'd think.

Enjoy long leisurely lunches in little pavement cafes. Shop in bustling markets. And best of all, go bargain hunting in the huge Hypermarkets or pedestrianised shopping precincts.



## FOR LESS THAN A DAY

If you haven't got the time (or you've forgotten your passport), why not take advantage of our non-landing cruise. Soak up the sea air, enjoy a good lunch with a bottle of wine then relax at the bar with a drink at shipboard prices.

## JUST FOR THE DAY

Sealink operate fast, frequent sailings to France, from Folkestone to Boulogne and from Dover to Calais and Dunkirk. Each with a distinctive charm of its own.

If Ostend in Belgium takes your fancy, from Dover there are up to 10 sailings a day, or you can fly across the waves in just 100 minutes with our fast jet foil services.

## FOR MORE THAN A DAY

Sealink's 60 hour and 5 Day mini tours allow you plenty of time to discover the Continental way of life. The choice is yours — Paris, Lyon, Brussels or anywhere you please.

## THE SEALINK SERVICE

Whatever you decide, travelling by Sealink adds to the fun. All the ships are fully stabilised and offer comfortable lounges, waiter or self-service restaurants and well stocked bars and duty-free shops.

## DON'T FORGET YOUR PASSPORT

If you intend landing in France, you will need a passport (or a British Excursion Document) only to British Subjects from main Post.

For non-landing cruises to France and for travel to Belgium, we can issue free of charge, to British Citizens and Citizens of the Republic of Ireland, a 60 hour Identity Card.



TIMBER : MOULDINGS : DOORS : WINDERS  
LININGS : THERMATRUE SECURITY DOORS : STAIRS  
GYPROC : FIBREGLASS : PAINTS : IRONMONGERY : TILES

**CHANNEL WOODCRAFT LTD**  
ESTABLISHED 1927  
TIMBER MERCHANTS AND JOINERY SPECIALISTS

Bowles Well Gardens (off Dover Road), Folkestone

Telephone 552

1/5 out 1  
leaflet C  
direct on  
03 or  
2046