

ARTHUR BROUGH PLAYERS



Leas Pavilion

FOLKESTONE

Monday 12th June, 1967

Play: SOMEONE AT THE DOOR

JOHN LUKEY & SONS, Ltd.

Established

Wine and Spirit Merchants

1853

- ★ Lukey's Finest Dry Gin. 70% Proof 42/6 Bottle
- ★ Pale Dry Sherry (Produce of Spain) 15/6 Bottle
- ★ Fine Old Golden Sherry (Produce of Spain) 15/6 Bottle
- ★ Try our popular $\frac{1}{2}$ gallon Pitchers of Table Wines from 17/3
- ★ We recommend our Elgin Scotch Whisky. 70% proof 43/6 Bottle

101 SANDGATE ROAD, FOLKESTONE

Also at Dover, Walmer, Hythe & Lyminge

Tel.: Folkestone 53169 (Two lines)

Consult us for all your building work

WILLIAM **DUNK** LIMITED

45/47 TONTINE STREET, FOLKESTONE

Telephone : Folkestone 51651

GOOD FOOD

-:-

INTIMATE SURROUNDINGS

***The Bay Tree Grill
and Bar***

at

The Burlington

400 yards from this Theatre

Late Meals : Weekdays 10 p.m. Saturdays 10.30 p.m.

TELEPHONE 55301

LEAS PAVILION

FOLKESTONE

Lessees - - - The Arthur Brough Players Ltd.

Telephone 52466

Licensee and Manager: RONALD W. LANE

THE

Arthur Brough Players

present

SOMEONE AT THE DOOR

by DOROTHY and CAMPBELL CHRISTIE

Ronnie Martin	JOHN CLEGG
Sally Martin	SONJA CROSBEE
Bill Reid	GREGORY de POLNAY
Price	BRIAN CHASE
Harry Kapel, J.P.	MARTIN BRADLEY
Constable O'Brien	ROGER TOLLIDAY
Sergeant Spedding	JASON TWELVETREES

Directed by TED CRAIG

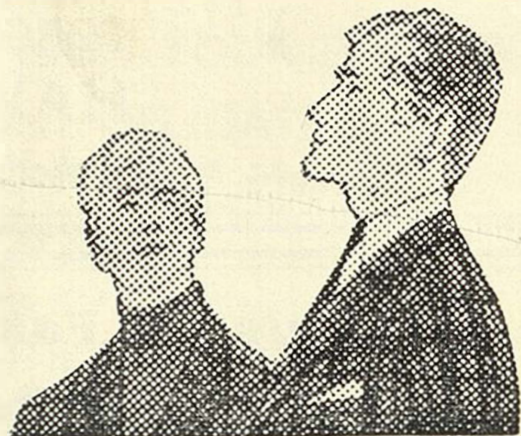
for men of today . . .

DAKS

clothes
from

WALTER MONCRIEFF

87/89 SANDGATE ROAD
FOLKESTONE



Acrise Place

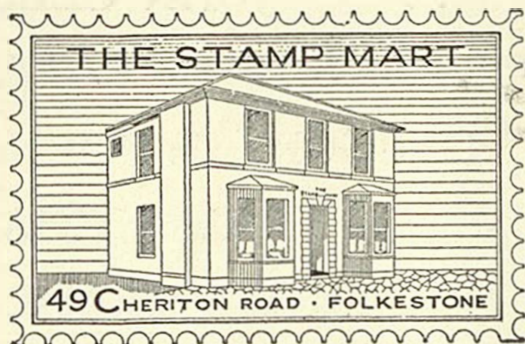
NEAR FOLKESTONE OFF A.260

ELIZABETHAN HOUSE WITH GEORGIAN MAIN FRONT
STILL OWNED AND OCCUPIED BY THE FAMILY WHO
FIRST BOUGHT IT IN 1666.

Open from 21st May to
1st October on Sundays, Thursdays & Bank Holidays. 2.30-
6 p.m. Admission 3/- Children 1/6 Gardens only 1/-. Other
days and times for a minimum of 6 people, (parties over 20-
special terms) by previous appointment only.
HISTORIC COSTUME DISPLAY

Tel: Hawkinge 382

HOME MADE TEAS AVAILABLE.



The Stamp Mart

49 Cheriton Road, Folkestone

Telephone 54508

Kent

DEALERS IN

ALL BRITISH COMMONWEALTH
& FOREIGN STAMPS, ALBUMS
& ACCESSORIES

Open each weekday except Wednesday

E. K. PLANT LTD.

EARTH MOVING PLANT AND CONTRACTORS
ROAD MAKING FARM IMPROVEMENTS

WORKS AND YARD
FORGE MEADOW
HAWKINGE

Telephone: Hawkinge 488/9

Famous for Fashions & Furnishings

Bobbys of Folkestone

Telephone:
53171

Synopsis of Scenes

The action of the play takes place in the Lounge-Hall of Narracott Manor in Buckinghamshire.

ACT I

Afternoon, late October

INTERVAL 12 MINUTES

ACT II

A month later

INTERVAL 12 MINUTES

ACT III

The same night

Time: The present

Scenery designed and painted by Audrey Bellwood

Stage Director

Paul Barker

Assistant Stage Managers

Sonja Crosbee

Jason Twelvetrees

Jill McGregor

Roger Tolliday

Lighting and Sound

- Chris Day

Stage Carpenter

- Hugh Haymen

IF BLURRED **HEARING** MARS YOUR PLEASURE
YOU CAN TEST WITHOUT OBLIGATION
25 CORRECTORS OF THE 12 BEST MAKES

C. E. GROOM

M.S.H.A.A., Qualified Hearing Aid Consultant

168 Sandgate Road r. Sandgate Hill Tel. Folkestone 544

Our next production

Next week we are presenting the delightful comedy "THE AMOROUS PRAWN" by Anthony Kimmins. This play had a long and successful run in the West End at the Saville Theatre, starring Evelyn Laye and was later made into a film starring Joan Greenwood.

Mavis Pugh stars in the lead role of Lady Fitzwilliam, Martin Bradley plays her husband, the General, and John Clegg plays the Corporal in charge of a detail that find themselves performing duties quite outside their normal Army posts.

Gail Starforth, Ted Craig and Gregory de Polnay are also in the cast. The play will be directed by Arthur Brough.

We wish to extend our thanks for the following:

Furniture Lord & Fisher, Dover Road
 Newman & Sons, Twiss Road, Hythe
 Walters, Cheriton Road

Light Fittings
& Shades Walters, Bouverie Place

Cigarettes used on stage by courtesy of John Player & Sons
Lighters by Ronson
Telephones by G.P.O. Canterbury
Negligees and Nylon Stockings by Kayser
Handbags and Suitcases by Lindy Lou, Sandgate Road

**In the interest of the comfort of patrons we respectfully suggest that
smoking should be restricted to the interval**

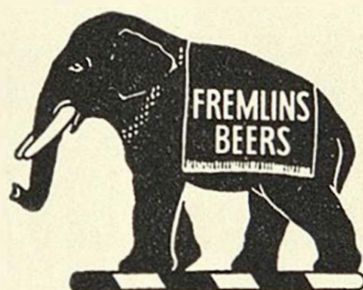
Visit the Prompt Corner Bar

O C L E E

Jewellers

35 SANDGATE ROAD, FOLKESTONE

Tel: Folkestone 52654



DRINK

FREMLINS

BEERS

ON SALE IN THE THEATRE BAR

You'll find us—

willing and able to give expert advice on
every form of business or holiday TRAVEL

***Milbanke
Travel Ltd.***

—at Bobbys
48-66 Sandgate Road, Folkestone
(52223)

**For all—AIR - SEA - RAIL - COACH - HOTEL
LONDON THEATRE — Reservations**

The Workbasket

of **CHERITON PLACE**
FOR PERSONAL SERVICE

KNITTING • CROCHET • TAPESTRIES

Jagaer and other leading makes

Call and see our wide selection of exquisite
COSTUME JEWELLERY

To find us — turn right outside the Theatre, first right again, and cross Sandgate Road. Telephone: 52802

The Store at the Water's Edge

FOLKESTONE MARINE LTD. FISHMARKET

(under the arch, on the right)

Tel. 55752

OPEN SEVEN DAYS A WEEK

You are welcome to come and see our exclusive range of Norwegian knitwear, holiday and outdoor wear, waterproofs and sailing clothing, genuine ships' bells, lamps, charts, all boat chandlery, fittings, paints, ropes and services.

Also: Forepeak, 164, Snargate Street, Dover. (Tel. 1020)
(closed Wednesday & Sunday)

For ALL SPORTS and TRAVEL GOODS

VISIT

Martin
Walter Ltd

NEW DEPARTMENTAL STORE

BOUVERIE PLACE

(Opposite G.P.O.)

Open Wednesday mornings and until 6 p.m. Saturdays

THIS IS A WALK-ROUND STORE