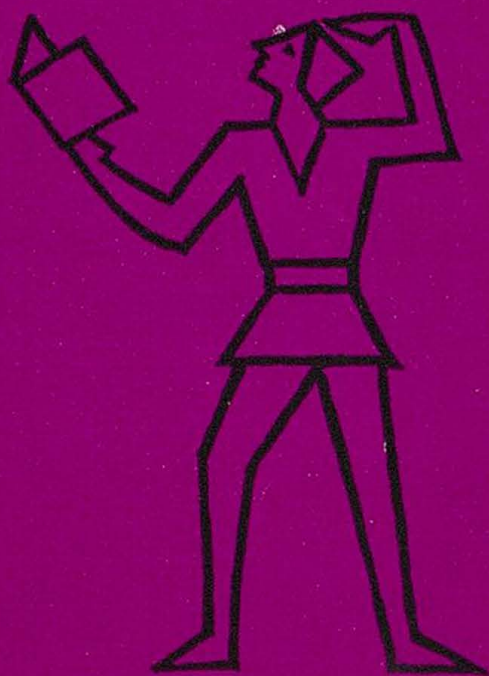


**ARTHUR BROUGH PLAYERS**



*Leas Pavilion*

**FOLKESTONE**

**Monday 17th July, 1967**

**Play: SUSPECT**

# JOHN LUKEY & SONS, Ltd.

Established

Wine and Spirit Merchants

1853

- ★ Lukey's Finest Dry Gin. 70% Proof 45/- Bottle
- ★ Pale Dry Sherry (Produce of Spain) 16/2 Bottle
- ★ Fine Old Golden Sherry (Produce of Spain) 16/2 Bottle
- ★ Try our popular  $\frac{1}{2}$  gallon Pitchers of Table Wines from 19/9
- ★ We recommend our Elgin Scotch Whisky. 70% proof 45/11 Bottle

**101 SANDGATE ROAD, FOLKESTONE**

Also at Dover, Walmer, Hythe & Lyminge

Tel.: Folkestone 53169 (Two lines)

Consult us for all your building work

WILLIAM **DUNK** LIMITED

45/47 TONTINE STREET, FOLKESTONE

Telephone : Folkestone 51651

GOOD FOOD

--

INTIMATE SURROUNDINGS

***The Bay Tree Grill  
and Bar***

at

**The Burlington**

400 yards from this Theatre

Late Meals : Weekdays 10 p.m. Saturdays 10.30 p.m.

TELEPHONE 55301

# LEAS PAVILION

## FOLKESTONE

Lessees - - - The Arthur Brough Players Ltd.

Telephone 52466

Licensee and Manager: RONALD W. LANE

THE

# Arthur Brough Players

present

## SUSPECT

by EDWARD PERCY and REGINALD DENHAM

Mrs. Smith	...	...	...	MAVIS PUGH
Goudie Macintyre	...	...	MARJORIE SUDELL	
Dr. Rendle	...	...	JOHN CLEGG	
Janet Rendle	...	...	SONJA CROSBEE	
Robert Smith	...	...	RICHARD FROST	
The Rev. Alfred Combermere	...	...	DAVID BLAGDEN	
Lady Const	...	...	GAIL STARFORTH	
Sir Hugo Const	...	...	MARTIN BRADLEY	

Directed by ARTHUR BROUGH

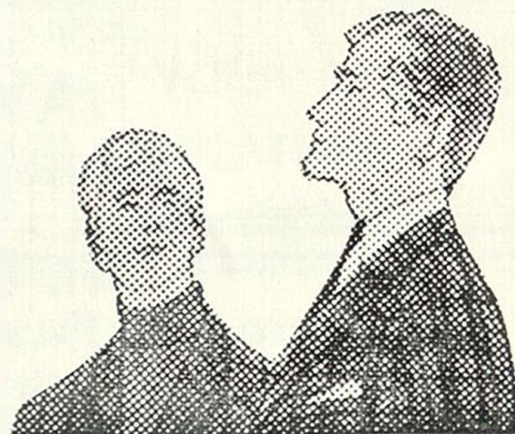
for men of today . . .

# DAKS

clothes  
from

WALTER MONCRIEFF

87/89 SANDGATE ROAD  
FOLKESTONE



# *Acrise Place*

NEAR FOLKESTONE OFF A.260

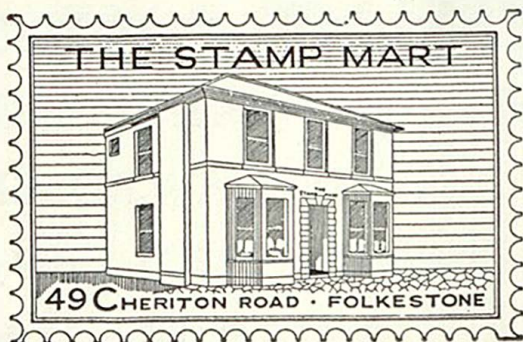
ELIZABETHAN HOUSE WITH GEORGIAN MAIN FRONT  
STILL OWNED AND OCCUPIED BY THE FAMILY WHO  
FIRST BOUGHT IT IN 1666.

Open from 21st May to  
1st October on Sundays, Thursdays & Bank Holidays. 2.30-  
6 p.m. Admission 3/- Children 1/6 Gardens only 1/-. Other  
days and times for a minimum of 6 people, (parties over 20-  
special terms) by previous appointment only.

HISTORIC COSTUME DISPLAY ·

Tel: Hawkinge 382

HOME MADE TEAS AVAILABLE.



## The Stamp Mart

49 Cheriton Road, Folkestone

Telephone 54508

Kent

DEALERS IN

ALL BRITISH COMMONWEALTH  
& FOREIGN STAMPS, ALBUMS  
& ACCESSORIES

Open each weekday except Wednesday

## E. K. PLANT LTD.

EARTH MOVING PLANT AND CONTRACTORS  
ROAD MAKING FARM IMPROVEMENTS

WORKS AND YARD  
FORGE MEADOW

HAWKINGE

Telephone: Hawkinge 488/9

Famous for Fashions & Furnishings

# *Bobbys of Folkestone*

Telephone:  
53171

## Synopsis of Scenes

The action of the play takes place in the garden lounge of Mrs. Smith's house at Polcurn, Cornwall.

Time — the present

### ACT I

A Saturday morning in September

---

INTERVAL 10 MINUTES

---

### ACT II

Evening of the same day. About 9.30 p.m.

---

INTERVAL 10 MINUTES

---

### ACT III

Sunday Afternoon

Scenery designed and painted by Audrey Bellwood

---

Stage Director

Paul Barker

Assistant Stage Managers

Sonja Crosbee  
Jason Twelvetrees  
Jill McGregor  
Roger Tolliday

Lighting and Sound

-

Chris Day

Stage Carpenter

-

Hugh Haymen

IF BLURRED **HEARING** MARS YOUR PLEASURE  
YOU CAN TEST WITHOUT OBLIGATION  
25 CORRECTORS OF THE 12 BEST MAKES

**C. E. GROOM**

M.S.H.A.A., Qualified Hearing Aid Consultant

168 Sandgate Road nr. Sandgate Hill Tel. Folkestone 54416

## Our next production

“HOT AND COLD IN ALL ROOMS” by Max Reitmann which we shall be presenting next week, is an infectiously gay comedy eminently suitable for the holiday season. The inhabitants of Mrs. Danvers’ apartment house are, for the most part, young people. Like young people everywhere they are beset with problems, particularly in affairs of the heart — indeed Mrs. Danvers herself is no exception. With the advent of Cecil Simpson into the household, whose main aim in life is to make everybody happy, things take a different turn however. After clearing one or two difficult hurdles, Cecil achieves his aim in a vastly entertaining way.

Max Reitmann has written an assortment of well observed and nicely contrasted characters and maintains the comedy at a riotous pace. The cast for this production will include Martin Bradley, Mavis Pugh, Gail Starforth, Jason Twelvetrees, Sonja Crosbee, David Blagden, Richard Frost and Roger Tolliday.

The play will be directed by John Clegg.

We wish to extend our thanks for the following:

Furniture

Bobby & Co., Ltd., Sandgate Road  
Lord & Fisher, Dover Road.  
Newman & Sons, Twiss Road, Hythe

Light Fittings  
& Shades

Walter’s, Bouverie Place

Negligees and Nylon Stockings by Kayser  
Cigarettes used on stage by courtesy of John Player & Sons  
Lighters by Ronson  
Telephones by G.P.O. Canterbury  
Suitcases & handbags by Lindy Lou, Sandgate Road.

---

In the interest of the comfort of patrons we respectfully suggest that  
smoking should be restricted to the interval

---

**Visit the Prompt Corner Bar**

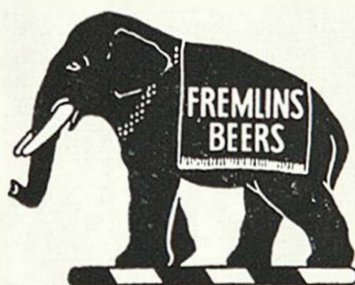
---

**O C L E E**

*Jewellers*

35 SANDGATE ROAD, FOLKESTONE

Tel: Folkestone 52654



**DRINK**

***FREMLINS***

**BEERS**

**ON SALE IN THE THEATRE BAR**

**You'll find us—**

willing and able to give expert advice on  
every form of business or holiday TRAVEL

***Milbanke  
Travel Ltd.***

—at Bobbys  
48-66 Sandgate Road, Folkestone  
(52223)

**For all—AIR - SEA - RAIL - COACH - HOTEL  
LONDON THEATRE — *Reservations***

# **The Workbasket** **of CHERITON PLACE** *FOR PERSONAL SERVICE*

KNITTING · CROCHET · TAPESTRIES

---

Jagaer and other leading makes

---

Call and see our wide selection of exquisite  
**COSTUME JEWELLERY**

---

To find us — turn right outside the Theatre, first right  
again, and cross Sandgate Road. Telephone: 52802

## **The Store at the Water's Edge** **FOLKESTONE MARINE LTD. FISHMARKET**

(under the arch, on the right)

Tel. 55752

**OPEN SEVEN DAYS A WEEK**

You are welcome to come and see our exclusive range of  
Norwegian knitwear, holiday and outdoor wear, waterproofs and sailing  
clothing, genuine ships' bells, lamps, charts, all boat chandlery, fittings,  
paints, ropes and services.

**Also: Forepeak, 164, Snargate Street, Dover. (Tel. 1020)**  
(closed Wednesday & Sunday)

SAVINGS FOR **SECURITY** FOR SAVINGS

**4<sup>1</sup>/<sub>4</sub>**

Per Cent

**HASTINGS & THANET**

BUILDING SOCIETY

**4<sup>3</sup>/<sub>4</sub>**

Per Cent

ASSETS EXCEED £85 MILLION.

MEMBER BUILDING SOCIETIES ASSOCIATION

Local Office - 125 SANDGATE ROAD, FOLKESTONE. (Tel. 55450)

Advertisements by Stilwell Darby & Co., Ltd., 24 Old Burlington Street, London W.1.  
Telephone: Regent 8671/4

Printed by Kentfield Tayler & Co., Ltd., 13 Grace Hill, Folkestone.