

ARTHUR BROUGH PLAYERS



Leas Pavilion



FOLKESTONE

Monday 3rd April, 1967

Play: A FRIEND INDEED

JOHN LUKEY & SONS, Ltd.

Established

Wine and Spirit Merchants

1853

- ★ Lukey's Finest Dry Gin. 70% Proof 42/6 Bottle
- ★ Pale Dry Sherry (Produce of Spain) 15/6 Bottle
- ★ Fine Old Golden Sherry (Produce of Spain) 15/6 Bottle
- ★ Try our popular $\frac{1}{2}$ gallon Pitchers of Table Wines from 17/3
- ★ We recommend our Elgin Scotch Whisky. 70% proof 43/6 Bottle

101 SANDGATE ROAD, FOLKESTONE

Also at Dover, Walmer, Hythe & Lyminge

Tel.: Folkestone 53169 (Two lines)

Consult us for all your building work

WILLIAM **DUNK** LIMITED

45/47 TONTINE STREET, FOLKESTONE

Telephone: Folkestone 51651

GOOD FOOD

-:-

INTIMATE SURROUNDINGS

***The Bay Tree Grill
and Bar***

at

The Burlington

400 yards from this Theatre

Late Meals: Weekdays 10 p.m. Saturdays 10.30 p.m.

TELEPHONE 55301

LEAS PAVILION

FOLKESTONE

Lessees - - - The Arthur Brough Players Ltd.

Telephone 52466

Licensee and Manager: RONALD W. LANE

THE

Arthur Brough Players

present

A FRIEND INDEED

by WILLIAM DOUGLAS HOME

Characters in order of appearance

Miri	GAIL STARFORTH
Sir John Holt (Minister to the Vatican)	...			TED CRAIG
Sir Lionel Hiburys (Permanent Under Secretary to the Foreign Office)	...			JOHN CLEGG
Lady Hiburys	PHOEBE	BRADLEY-WILLIAMS	
Sheila Hiburys	SONJA CROSBEE
Bobby Butterfield	RICHARD FROST
Rosie Butterfield	MAVIS PUGH

The play directed by PAUL BARKER

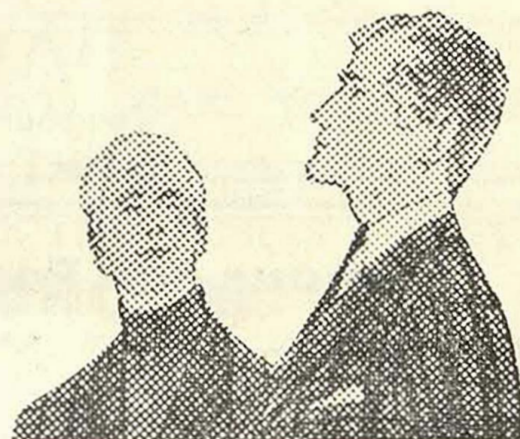
for men of today . . .

DAKS

clothes
from

WALTER MONCRIEFF

87/89 SANDGATE ROAD
FOLKESTONE



Acrise Place

NEAR FOLKESTONE OFF A.260

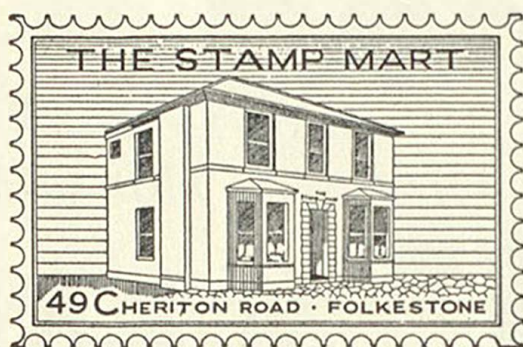
ELIZABETHAN HOUSE WITH GEORGIAN MAIN FRONT
STILL OWNED AND OCCUPIED BY THE FAMILY WHO
FIRST BOUGHT IT IN 1666.

Open from 1st May to
1st October on Sundays, Thursdays & Bank Holidays. 2.30-
6 p.m. Admission 3/- Children 1/6 Gardens only 1/-. Other
days and times for a minimum of 6 people, (parties over 20-
special terms) by previous appointment only.

HISTORIC COSTUME DISPLAY

Tel: Hawkinge 382

HOME MADE TEAS AVAILABLE.



The Stamp Mart

49 Cheriton Road, Folkestone

Telephone 54508

Kent

DEALERS IN

ALL BRITISH COMMONWEALTH
& FOREIGN STAMPS, ALBUMS
& ACCESSORIES

Open each weekday except Wednesday

E. K. PLANT LTD.

EARTH MOVING PLANT AND CONTRACTORS
ROAD MAKING FARM IMPROVEMENTS

WORKS AND YARD
FORGE MEADOW

HAWKINGE

Telephone: Hawkinge 488/9

Famous for Fashions & Furnishings

Bobbys of Folkestone

Telephone:
53171

Synopsis of Scenes

The action of the play takes place in the apartment in Rome of Sir John Holt, British Minister to the Vatican.

ACT I

Scene 1 Breakfast time

Scene 2 The same day. Early Evening

INTERVAL 15 MINUTES

ACT II

Scene 1 Late evening

Scene 2 Early the following morning. About 3 a.m.

Scenery designed and painted by Audrey Bellwood

Production Director	-	Paul Barker
Stage Director		Clive Bennett
Assistant Stage Managers		Sonja Crosbee Sarah Fisher Jason Twelvetrees Jill McGregor Roger Tolliday Chris Day
Stage Carpenter	-	Hugh Haymen

IF BLURRED **HEARING** MARS YOUR PLEASURE
YOU CAN TEST WITHOUT OBLIGATION
25 CORRECTORS OF THE 12 BEST MAKES

C. E. GROOM

M.S.H.A.A., Qualified Hearing Aid Consultant

168 Sandgate Road nr. Sandgate Hill Tel. Folkestone 54416

Our next production

Next week our programme will consist of two separate plays. The first of which is "THE BROWNING VERSION" by Terence Rattigan. Set in a public school in the South of England, the story concerns Andrew Crocker-Harris, a middle-aged master, who, although a brilliant scholar, lacks the qualities which would have made him a popular and successful figure in his profession. Married to a woman who neither loves nor understands him, his domestic life is fraught with unhappiness. This play is an intensely moving and sympathetic study of a man from whom love and success have been constantly withheld. The part of Andrew Crocker-Harris will be played by Arthur Brough. Others in the cast will include Phoebe Bradley-Williams, Ted Craig, Sonja Crosbee, Richard Frost, Jason Twelvetrees, and we welcome a newcomer to the company Leslie Lawton. The play will be directed by Ted Craig.

The second play is a recent Noel Coward success, one of a trilogy presented at the Globe Theatre, London, last Autumn "COME INTO THE GARDEN MAUD". This is a light and humorous play in the best Coward style. The action takes place in an hotel in Lausanne, Switzerland, among the international set, where a rich American couple meet up with an Italian countess. This meeting has a result which is both unexpected and richly comic. These two plays provide an unusual and well-balanced programme. The cast of "COME INTO THE GARDEN MAUD", will be John Clegg, Mavis Pugh, Gail Starforth and Roger Tolliday. Paul Barker will direct.

We would like to extend our thanks to all who have kindly supplied furniture and properties for this production.

Cigarettes used on stage by courtesy of John Player & Sons
Lighters by Ronson
Telephones by G.P.O. Canterbury
Negligees and Nylon Stockings by Kayser

In the interest of the comfort of patrons we respectfully suggest that smoking should be restricted to the interval

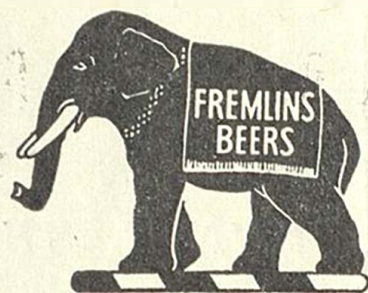
Visit the Prompt Corner Bar

O C L E E

Jewellers

35 SANDGATE ROAD, FOLKESTONE

Tel: Folkestone 52654



DRINK

FREMLINS

BEERS

ON SALE IN THE THEATRE BAR

You'll find us—

**willing and able to give expert advice on
every form of business or holiday TRAVEL**

***Milbanke
Travel Ltd.***

**—at Bobbys
48-66 Sandgate Road, Folkestone
(52223)**

**For all—AIR - SEA - RAIL - COACH - HOTEL
LONDON THEATRE — *Reservations***

The Workbasket **of CHERITON PLACE** *FOR PERSONAL SERVICE*

KNITTING • CROCHET • TAPESTRIES

Jagaer and other leading makes

call and see a wide selection of exquisite
COSTUME JEWELLERY

You'll find us by turning right off the Leas and crossing
Sandgate Road. Telephone: 52802

The Store at the Water's Edge **FOLKESTONE MARINE LTD. FISHMARKET**

(under the arch, on the right)

Tel. 55752

OPEN SEVEN DAYS A WEEK

You are welcome to come and see our exclusive range of
Norwegian knitwear, holiday and outdoor wear, waterproofs and sailing
clothing, genuine ships' bells, lamps, charts, all boat chandlery, fittings,
paints, ropes and services.

Also: Forepeak, 164, Snargate Street, Dover. (Tel. 1020)
(closed Wednesday & Sunday)

For ALL SPORTS and TRAVEL GOODS

VISIT

Martin
Walter Ltd

NEW DEPARTMENTAL STORE
BOUVERIE PLACE
(Opposite G.P.O.)

Open Wednesday mornings and until 6 p.m. Saturdays

THIS IS A WALK-ROUND STORE