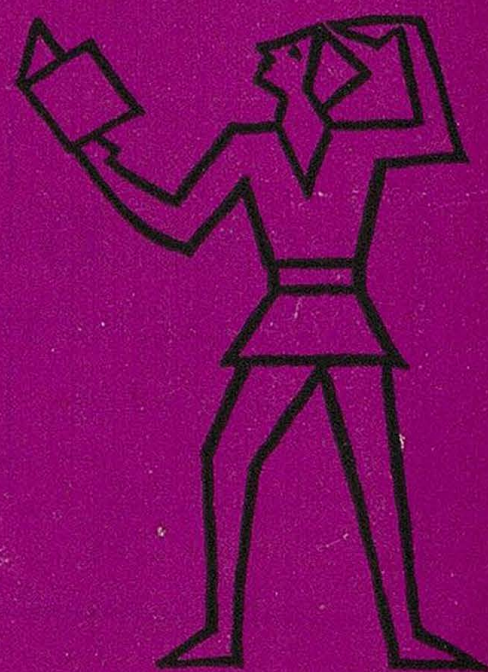


ARTHUR BROUGH PLAYERS



Leas Pavilion

FOLKESTONE

Monday 23rd October, 1967

Play: THE SCHOOL FOR SCANDAL

JOHN LUKEY & SONS, Ltd.

Established

Wine and Spirit Merchants

1853

- ★ Lukey's Finest Dry Gin. 70% Proof 45/- Bottle
- ★ Pale Dry Sherry (Produce of Spain) 16/2 Bottle
- ★ Fine Old Golden Sherry (Produce of Spain) 16/2 Bottle
- ★ Try our popular $\frac{1}{2}$ gallon Pitchers of Table Wines from 19/9
- ★ We recommend our Elgin Scotch Whisky. 70% proof 45/11 Bottle

101 SANDGATE ROAD, FOLKESTONE

Also at Dover, Walmer, Hythe & Lyminge

Tel.: Folkestone 53169 (Two lines)

Consult us for all your building work

WILLIAM **DUNK** LIMITED
45, 47 TONTINE STREET, FOLKESTONE

Telephone: Folkestone 51651

GOOD FOOD

:-:-

INTIMATE SURROUNDINGS

***The Bay Tree Grill
and Bar***

at

The Burlington

400 yards from this Theatre

Late Meals: Weekdays 10 p.m. Saturdays 10.30 p.m.

TELEPHONE 55301

LEAS PAVILION

FOLKESTONE

Lessees - - - The Arthur Brough Players Ltd.

Telephone 52466

Licensee and Manager: RONALD W. LANE

THE
Arthur Brough Players

present

THE SCHOOL FOR SCANDAL

by RICHARD BRINSLEY SHERIDAN

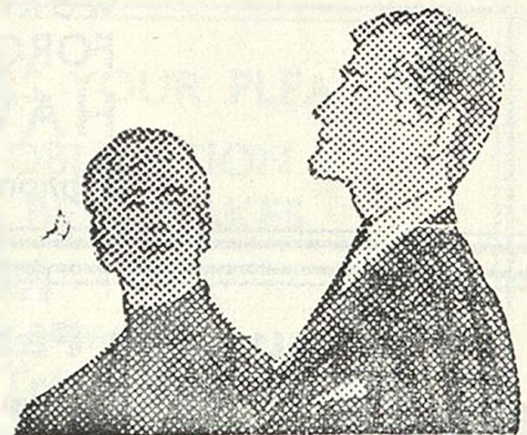
Lady Sneerwell	FERNANDA MARLOWE
Snake	JOHN HUGHES
Joseph Surface	LESLIE LAWTON
Maria	SONJA CROSBEE
Mrs. Candour	MEGAN LATIMER
Crabtree	KENNETH KEELING
Sir Benjamin Backbite	GEOFFREY COLVILE
Sir Peter Teazle	ARTHUR BROUGH
Rowley	PAUL BARKER
Lady Teazle	JENNY OULTON
Sir Oliver Surface	MARTIN BRADLEY
Moses	JOHN HUGHES
Charles Surface	DAVID BLAGDEN
Careless	PETER SERGEANT
Sir Harry Bumper	JASON TWELVETREES
Servant to Sir Peter Teazle	CHRIS DAY
Servant to Joseph Surface	ROGER TOLLIDAY
A maid	JILL MCGREGOR

Directed by ELIZABETH ADDYMAN

for men of today . . .

DAKS clothes
from

WALTER MONCRIEFF
87/89 SANDGATE ROAD
FOLKESTONE



Acrise Place

NEAR FOLKESTONE OFF A.260

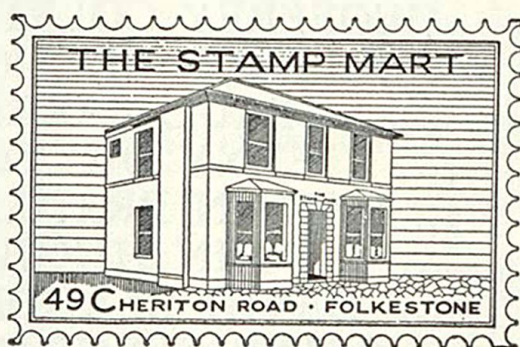
ELIZABETHAN HOUSE WITH GEORGIAN MAIN FRONT
STILL OWNED AND OCCUPIED BY THE FAMILY WHO
FIRST BOUGHT IT IN 1666.

Open from 21st May to
1st October on Sundays, Thursdays & Bank Holidays. 2.30-
6 p.m. Admission 3/- Children 1/6 Gardens only 1/-. Other
days and times for a minimum of 6 people, (parties over 20-
special terms) by previous appointment only.

HISTORIC COSTUME DISPLAY ·

Tel: Hawkinge 382

HOME MADE TEAS AVAILABLE.



The Stamp Mart

49 Cheriton Road, Folkestone

Telephone 54508

Kent

DEALERS IN

ALL BRITISH COMMONWEALTH
& FOREIGN STAMPS, ALBUMS
& ACCESSORIES

Open each weekday except Wednesday

E. K. PLANT LTD.

EARTH MOVING PLANT AND CONTRACTORS

ROAD MAKING

FARM IMPROVEMENTS

WORKS AND YARD

FORGE MEADOW

HAWKINGE

Telephone: Hawkinge 488/9

Famous for Fashions & Furnishings

Bobbys of Folkestone

Telephone:
53171

Synopsis of Scenes

ACT I

- Scene 1 Lady Sneerwell's Boudoir
Scene 2 Sir Peter Teazle's House
Scene 3 Lady Sneerwell's Drawing Room
Scene 4 Sir Peter Teazle's House

INTERVAL 12 MINUTES

ACT II

- Scene 1 The Picture Room in Charles Surface's House
Scene 2 The Library in Joseph Surface's House
Scene 3 Sir Peter Teazle's House
Scene 4 The Library in Joseph Surface's House

Scenery designed and painted by Audrey Bellwood

Stage Director		Paul Barker
Assistant Stage Managers		Sonja Crosbee Jason Twelvetrees Jill McGregor Roger Tolliday
Lighting and Sound	-	Chris Day
Stage Carpenter	-	Hugh Haymen

IF BLURRED **HEARING** MARS YOUR PLEASURE
YOU CAN TEST WITHOUT OBLIGATION
25 CORRECTORS OF THE 12 BEST MAKES

C. E. GROOM

M.S.H.A.A., Qualified Hearing Aid Consultant

168 Sandgate Road nr. Sandgate Hill Tel. Folkestone 5441

Please Note:—

*our 39th Season opens
Easter 1968.*

We wish to extend our thanks for the following:

Furniture Lord & Fisher, Dover Road
 Newman & Sons, Twiss Road, Hythe

Glass &
China

Bobby & Co., Ltd., Sandgate Road,

Portraits painted by the Folkestone School of Art,
Bouverie Road East.

Costumes by C. W. & May, London.

Wigs by Wig Creations, London.

*We would like to extend our thanks to all who have kindly
supplied furniture and properties during the past season.*

**In the interest of the comfort of patrons we respectfully suggest that
smoking should be restricted to the interval**

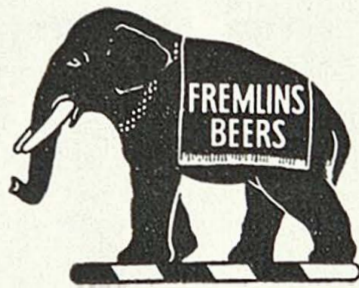
Visit the Prompt Corner Bar

OCLEE

Jewellers

35 SANDGATE ROAD, FOLKESTONE

Tel: Folkestone 52654



DRINK

FREMLINS

BEERS

ON SALE IN THE THEATRE BAR

THE STAGE

The Stage and Television today.

Published jointly every Thursday — **9d.**

**Two papers in one for everyone interested in theatre
and T.V.**

The Workbasket

of **CHERITON PLACE**
FOR PERSONAL SERVICE

KNITTING • CROCHET • TAPESTRIES

Jagaer and other leading makes

Call and see our wide selection of exquisite
COSTUME JEWELLERY

To find us — turn right outside the Theatre, first right again, and cross Sandgate Road. Telephone: 52802

The Store at the Water's Edge

FOLKESTONE MARINE LTD. FISHMARKET

(under the arch, on the right) Tel. 55752

OPEN SEVEN DAYS A WEEK

You are welcome to come and see our exclusive range of Norwegian knitwear, holiday and outdoor wear, waterproofs and sailing clothing, genuine ships' bells, lamps, charts, all boat chandlery, fittings, paints, ropes and services.

Also: Forepeak, 164, Snargate Street, Dover. (Tel. 1020)
(closed Wednesday & Sunday)

SAVINGS FOR **SECURITY** FOR SAVINGS

4¹/₄

Per Cent

HASTINGS & THANET

BUILDING SOCIETY

4³/₄

Per Cent

ASSETS EXCEED £85 MILLION. MEMBER BUILDING SOCIETIES ASSOCIATION

Local Office - 125 SANDGATE ROAD, FOLKESTONE. (Tel. 55450)

Advertisements by Stilwell Darby & Co., Ltd., 24 Old Burlington Street, London W.1.
Telephone: 01 734 8671 4 LINES

Printed by Kentfield Tayler & Co., Ltd., 13 Grace Hill, Folkestone.