

ARTHUR BROUGH PLAYERS



Leas Pavilion



FOLKESTONE

Monday 10th April, 1967

**Plays: THE BROWNING VERSION &
COME INTO THE GARDEN MAUD**

JOHN LUKEY & SONS, Ltd.

Established

Wine and Spirit Merchants

1853

- ★ Lukey's Finest Dry Gin. 70% Proof 42/6 Bottle
- ★ Pale Dry Sherry (Produce of Spain) 15/6 Bottle
- ★ Fine Old Golden Sherry (Produce of Spain) 15/6 Bottle
- ★ Try our popular $\frac{1}{2}$ gallon Pitchers of Table Wines from 17/3
- ★ We recommend our Elgin Scotch Whisky. 70% proof 43/6 Bottle

101 SANDGATE ROAD, FOLKESTONE

Also at Dover, Walmer, Hythe & Lyminge

Tel.: Folkestone 53169 (Two lines)

Consult us for all your building work

WILLIAM **DUNK** LIMITED

45/47 TONTINE STREET, FOLKESTONE

Telephone : Folkestone 51651

GOOD FOOD

-:-

INTIMATE SURROUNDINGS

***The Bay Tree Grill
and Bar***

at

The Burlington

400 yards from this Theatre

Late Meals : Weekdays 10 p.m. Saturdays 10.30 p.m.

TELEPHONE 55301

LEAS PAVILION

FOLKESTONE

Lessees - - - The Arthur Brough Players Ltd.

Telephone 52466

Licensee and Manager: RONALD W. LANE

THE
Arthur Brough Players
present
THE BROWNING VERSION
by **TERENCE RATTIGAN**

Characters in order of appearance

John Taplow	RICHARD FROST
Frank Hunter	LESLIE LAWTON
Millie Crocker-Harris	PHOEBE BRADLEY-WILLIAMS	...	
Andrew Crocker-Harris	ARTHUR BROUGH
Dr. Frobisher	TED CRAIG
Peter Gilbert	JASON TWELVETREES	
Mrs. Gilbert	SONJA CROSBEE

Directed by **TED CRAIG**

The action of the play takes place in the sitting-room of the Crocker-Harris's flat at a Public School in the South of England.

Time: About 6.30 p.m. of a day in July

INTERVAL 15 MINUTES

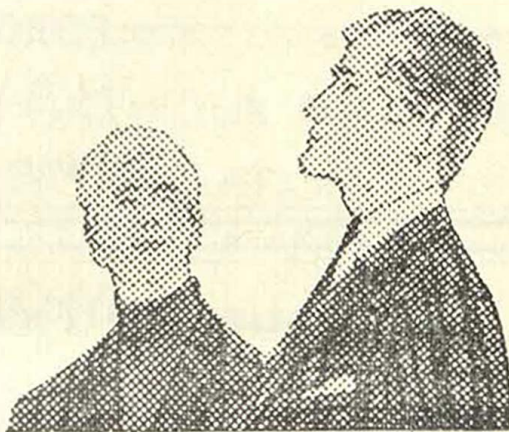
for men of today . . .

DAKS

clothes
from

WALTER MONCRIEFF

87/89 SANDGATE ROAD
FOLKESTONE



Acrise Place

NEAR FOLKESTONE OFF A.260

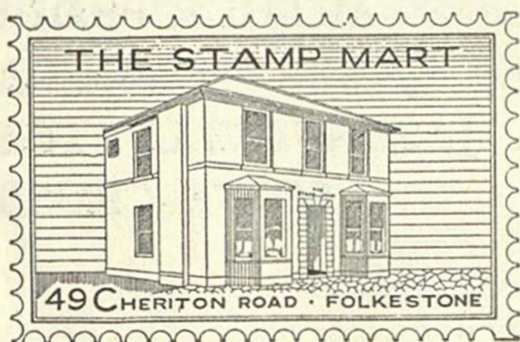
ELIZABETHAN HOUSE WITH GEORGIAN MAIN FRONT
STILL OWNED AND OCCUPIED BY THE FAMILY WHO
FIRST BOUGHT IT IN 1666.

Open from 1st May to
1st October on Sundays, Thursdays & Bank Holidays. 2.30-
6 p.m. Admission 3/- Children 1/6 Gardens only 1/-. Other
days and times for a minimum of 6 people, (parties over 20-
special terms) by previous appointment only.

HISTORIC COSTUME DISPLAY

Tel: Hawkinge 382

HOME MADE TEAS AVAILABLE.



The Stamp Mart

49 Cheriton Road, Folkestone

Telephone 54508

Kent

DEALERS IN

ALL BRITISH COMMONWEALTH
& FOREIGN STAMPS, ALBUMS
& ACCESSORIES

Open each weekday except Wednesday

E. K. PLANT LTD.

EARTH MOVING PLANT AND CONTRACTORS
ROAD MAKING FARM IMPROVEMENTS

WORKS AND YARD
FORGE MEADOW

HAWKINGE

Telephone: Hawkinge 488/9

Famous for Fashions & Furnishings

Bobbys of Folkestone

Telephone:
53171

COME INTO THE GARDEN MAUD

by NOEL COWARD

Characters in order of appearance

Anna-Mary Conklin	GAIL STARFORTH
Felix (a waiter)		ROGER TOLLIDAY
Verner Conklin	JOHN CLEGG
Maud Caragnani	MAVIS PUGH

Directed by PAUL BARKER

The scene is the sitting-room of a suite in a luxurious hotel in Lausanne, Switzerland. The action passes during the course of one evening.

Scene 1 7 p.m. on a Spring evening

Scene 2 The same. About 11 p.m.

Scenery designed and painted by Audrey Bellwood

Production Director	-	Paul Barker
Stage Director		Clive Bennett
Assistant Stage Managers		Sonja Crosbee Sarah Fisher Jason Twelvetrees Jill McGregor Roger Tolliday Chris Day
Stage Carpenter	-	Hugh Haymen

IF BLURRED **HEARING** MARS YOUR PLEASURE
YOU CAN TEST WITHOUT OBLIGATION
25 CORRECTORS OF THE 12 BEST MAKES

C. E. GROOM

M.S.H.A.A., Qualified Hearing Aid Consultant

168 Sandgate Road nr. Sandgate Hill Tel. Folkestone 54416

Our next production

Next week we are presenting "VERDICT" a play by Agatha Christie whose thrillers have fascinated theatregoers all over the country for many years. "VERDICT," however, is rather out of the run of the usual "whodunit" type of entertainment, being more in the nature of a domestic drama. The leading characters are extremely well drawn.

The story concerns Professor Karl Hendryk, an exile from his own country and living in England with his wife and her cousin, Lisa. Complications arise when the Professor takes as a pupil a young English girl. From then on the situation becomes increasingly tense with emotional scenes which are extremely moving.

This play is first-rate Agatha Christie in which suspense, drama and comedy are ingeniously blended.

The cast will include Ted Craig, Mavis Pugh, John Clegg, Phoebe Bradley-Williams, Gail Stanforth, Leslie Lawton, Sonja Crosbee, Richard Frost, Clive Bennett and Jason Twelvetrees. Paul Barker will direct the play.

We would like to extend our thanks to all who have kindly supplied furniture and properties for this production.

Cigarettes used on stage by courtesy of John Player & Sons
Lighters by Ronson
Telephones by G.P.O. Canterbury
Negligees and Nylon Stockings by Kayser
Champagne by Moët & Chandon
Handbags and Suitcases by 'Lindy Lou,' Sandgate Road

In the interest of the comfort of patrons we respectfully suggest that smoking should be restricted to the interval

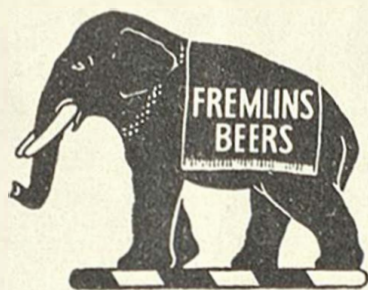
Visit the Prompt Corner Bar

O C L E E

Jewellers

35 SANDGATE ROAD, FOLKESTONE

Tel: Folkestone 52654



DRINK

FREMLINS

BEERS

ON SALE IN THE THEATRE BAR

You'll find us—

willing and able to give expert advice on
every form of business or holiday TRAVEL

***Milbanke
Travel Ltd.***

—at Bobbys
48-66 Sandgate Road, Folkestone
(52223)

**For all—AIR - SEA - RAIL - COACH - HOTEL
LONDON THEATRE — Reservations**

The Workbasket **of CHERITON PLACE** *FOR PERSONAL SERVICE*

KNITTING • CROCHET • TAPESTRIES

Jagaer and other leading makes

call and see a wide selection of exquisite
COSTUME JEWELLERY

You'll find us by turning right off the Leas and crossing
Sandgate Road. Telephone: 52802

The Store at the Water's Edge **FOLKESTONE MARINE LTD. FISHMARKET**

(under the arch, on the right) Tel. 55752

OPEN SEVEN DAYS A WEEK

You are welcome to come and see our exclusive range of
Norwegian knitwear, holiday and outdoor wear, waterproofs and sailing
clothing, genuine ships' bells, lamps, charts, all boat chandlery, fittings,
paints, ropes and services.

Also: Forepeak, 164, Snargate Street, Dover. (Tel. 1020)
(closed Wednesday & Sunday)

For ALL SPORTS and TRAVEL GOODS

VISIT

Martin
Walter Ltd

NEW DEPARTMENTAL STORE
BOUVERIE PLACE
(Opposite G.P.O.)

Open Wednesday mornings and until 6 p.m. Saturdays

THIS IS A WALK-ROUND STORE