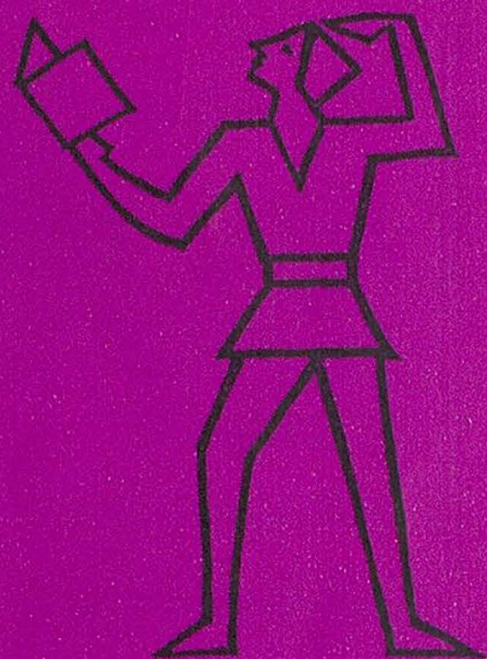


ARTHUR BROUGH PLAYERS



L



Leas Pavilion

FOLKESTONE

Monday 22nd May, 1937

Play: MURDER MISTAKEN

JOHN LUKEY & SONS, Ltd.

Established

Wine and Spirit Merchants

1853

- ★ Lukey's Finest Dry Gin. 70% Proof 42/6 Bottle
- ★ Pale Dry Sherry (Produce of Spain) 15/6 Bottle
- ★ Fine Old Golden Sherry (Produce of Spain) 15/6 Bottle
- ★ Try our popular $\frac{1}{2}$ gallon Pitchers of Table Wines from 17/3
- ★ We recommend our Elgin Scotch Whisky. 70% proof 43/6 Bottle

101 SANDGATE ROAD, FOLKESTONE

Also at Dover, Walmer, Hythe & Lyminge

Tel.: Folkestone 53169 (Two lines)

Consult us for all your building work

WILLIAM **DUNK** LIMITED

45/47 TONTINE STREET, FOLKESTONE

Telephone : Folkestone 51651

GOOD FOOD

--

INTIMATE SURROUNDINGS

***The Bay Tree Grill
and Bar***

at

The Burlington

400 yards from this Theatre

Late Meals : Weekdays 10 p.m. Saturdays 10.30 p.m.

TELEPHONE 55301

LEAS PAVILION

FOLKESTONE

Lessees - - - The Arthur Brough Players Ltd.

Telephone 52466

Licensee and Manager: RONALD W. LANE

THE

Arthur Brough Players

present

MURDER MISTAKEN

by JANET GREEN

Characters in order of appearance

Monica Bare	MAVIS PUGH
Emmie	JESSIE BALL
Philip Mortimer	JOHN CLEGG
Edward Bare	LESLIE LAWTON
Freda Jefferies	MURIEL BARKER
Charlotte Young	GAIL STARFORTH

The play directed by TED CRAIG

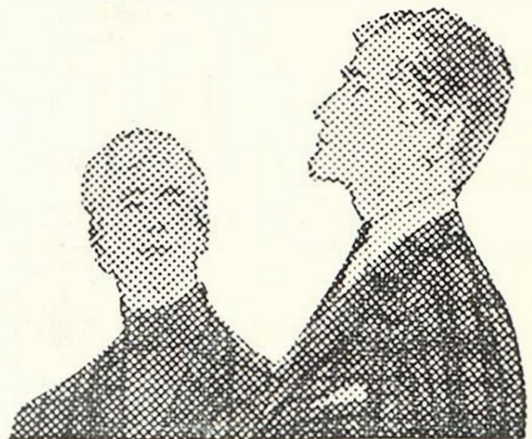
for men of today . . .

DAKS

clothes
from

WALTER MONCRIEFF

87/89 SANDGATE ROAD
FOLKESTONE



Acrise Place

NEAR FOLKESTONE OFF A.260

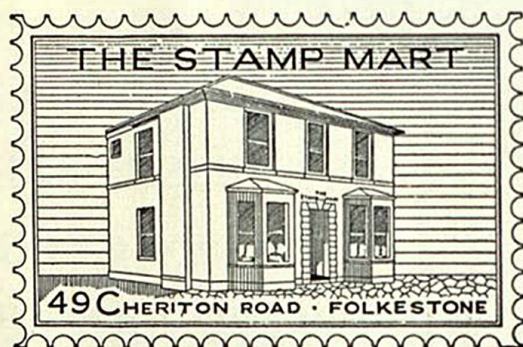
ELIZABETHAN HOUSE WITH GEORGIAN MAIN FRONT
STILL OWNED AND OCCUPIED BY THE FAMILY WHO
FIRST BOUGHT IT IN 1666.

Open from 21st May to
1st October on Sundays, Thursdays & Bank Holidays. 2.30-
6 p.m. Admission 3/- Children 1/6 Gardens only 1/-. Other
days and times for a minimum of 6 people, (parties over 20-
special terms) by previous appointment only.

HISTORIC COSTUME DISPLAY

Tel: Hawkinge 382

HOME MADE TEAS AVAILABLE.



The Stamp Mart

49 Cheriton Road, Folkestone

Telephone 54508

Kent

DEALERS IN

ALL BRITISH COMMONWEALTH
& FOREIGN STAMPS, ALBUMS
& ACCESSORIES

Open each weekday except Wednesday

E. K. PLANT LTD.

EARTH MOVING PLANT AND CONTRACTORS
ROAD MAKING FARM IMPROVEMENTS

WORKS AND YARD
FORGE MEADOW
HAWKINGE

Telephone: Hawkinge 488/9

Famous for Fashions & Furnishings

Bobbys of Folkestone

Telephone:
53171

Synopsis of Scenes

The action of the play takes place in the sitting-room of Monica Bare's house at the top of Sunrise Hill, just outside a small market town in Kent.

ACT I

- Scene 1 An afternoon in November
Scene 2 Afternoon — a few days later
Scene 3 Afternoon — eight weeks later

INTERVAL 15 MINUTES

ACT II

- Scene 1 Noon — Two months later
Scene 2 Noon — Ten days later
Scene 3 After tea, the same day

Time: The Present

Scenery designed and painted by Audrey Bellwood

Stage Director	Paul Barker
Assistant Stage Managers	Sonja Crosbee Jason Twelvetrees Jill McGregor Roger Tolliday
Lighting and Sound	- Chris Day
Stage Carpenter	- Hugh Haymen

IF BLURRED **HEARING** MARS YOUR PLEASURE

YOU CAN TEST WITHOUT OBLIGATION
25 CORRECTORS OF THE 12 BEST MAKES

C. E. GROOM

M.S.H.A.A., Qualified Hearing Aid Consultant

168 Sandgate Road nr. Sandgate Hill Tel. Folkestone 54416

Our next production

Next week we are presenting "FRESH FIELDS" by Ivor Novello. In this very amusing comedy, two sisters inherit a Belgravian mansion, with all its luxurious effects, but without the income necessary for its upkeep. They are visited by a rough but warm-hearted family of Australians, and after some gentle persuasion the Australians decide to take up their abode with the aristocratic sisters as paying guests. Out of this situation arise some very funny moments and just a little romance, and you are assured of a delightful evening.

Mavis Pugh and Muriel Barker will be playing the sisters with Jessie Ball leading the Australian battalion. Also in the cast will be John Clegg, Gail Starforth and Sonja Crosbee. The play will be directed by Ted Craig.

We wish to extend our thanks for the following:

Furniture	Lord & Fisher, Newman & Sons, Collectors Corner, Sandgate
Glass & China	Bobby & Co., Sandgate Road
Silverwork	Oclee & Sons, Sandgate Road

Cigarettes used on stage by courtesy of John Player & Sons
Lighters by Ronson
Telephones by G.P.O. Canterbury
Negligees and Nylon Stockings by Kayser

In the interest of the comfort of patrons we respectfully suggest that smoking should be restricted to the interval

Visit the Prompt Corner Bar

OCLEE

Jewellers

35 SANDGATE ROAD, FOLKESTONE

Tel: Folkestone 52654



DRINK

FREMLINS

BEERS

ON SALE IN THE THEATRE BAR

You'll find us—

willing and able to give expert advice on
every form of business or holiday TRAVEL

***Milbanke
Travel Ltd.***

—at Bobbys
48-66 Sandgate Road, Folkestone
(52223)

**For all—AIR - SEA - RAIL - COACH - HOTEL
LONDON THEATRE — *Reservations***

The Workbasket of **CHERITON PLACE** FOR PERSONAL SERVICE

KNITTING • CROCHET • TAPESTRIES

Jagaer and other leading makes

Call and see our wide selection of exquisite
COSTUME JEWELLERY

To find us — turn right outside the Theatre, first right
again, and cross Sandgate Road. Telephone: 52802

The Store at the Water's Edge **FOLKESTONE MARINE LTD. FISHMARKET**

(under the arch, on the right)

Tel. 55752

OPEN SEVEN DAYS A WEEK

You are welcome to come and see our exclusive range of
Norwegian knitwear, holiday and outdoor wear, waterproofs and sailing
clothing, genuine ships' bells, lamps, charts, all boat chandlery, fittings,
paints, ropes and services.

Also: Forepeak, 164, Snargate Street, Dover. (Tel. 1020)
(closed Wednesday & Sunday)

For ALL SPORTS and TRAVEL GOODS

VISIT

Martin
Walter Ltd

NEW DEPARTMENTAL STORE
BOUVERIE PLACE
(Opposite G.P.O.)

Open Wednesday mornings and until 6 p.m. Saturdays

THIS IS A WALK-ROUND STORE

Advertisements by Stillwell Darby & Co., Ltd., 24 Old Burlington Street, London W.1.

Telephone: Regent 8671/4

Printed by Kentfield Tayler & Co., Ltd., 13 Grace Hill, Folkestone.