

IF BLURRED **HEARING** MARS YOUR PLEASURE
YOU CAN TEST WITHOUT OBLIGATION
25 CORRECTORS OF THE 12 BEST MAKES

C. E. GROOM

M.S.H.A.A., Qualified Hearing Aid Consultant

168 Sandgate Road nr. Sandgate Hill Tel. Folkestone 54416

The Arthur Brough Players

A MESSAGE TO PATRONS

From the Director of Productions

It has always been the policy of this company to cater for the residents of Folkestone as well as the holidaymakers during the summer months. Therefore we try to give a frequent change of programme in the months when a handful of shows could probably each run for longer than usual. This year we are adopting the policy of a fortnightly change of programme. This seems the fairest arrangement for all concerned and as we have noted that most of our regular patrons take their holidays during August and September, we are going to run the two-week system during this period. Regular bookings will be reserved for the first week of each production unless patrons advise the box office staff otherwise.

The strain of producing a different play each week is enormous. It is almost impossible to attain a consistent standard; particularly in these days of S.E.T. and rising costs when we have to keep our production staff down to a minimum. Doing five plays for a fortnight each, however, will inevitably mean a higher standard of presentation in all ways. It also means that the company will have a slight 'breather', which I hope you will agree they deserve.

I honestly believe that this return to the fortnightly system will be to every one's advantage—and if you are worried about what to do with yourselves every other week, you could always come and see the show again!!

LESLIE LAWTON.

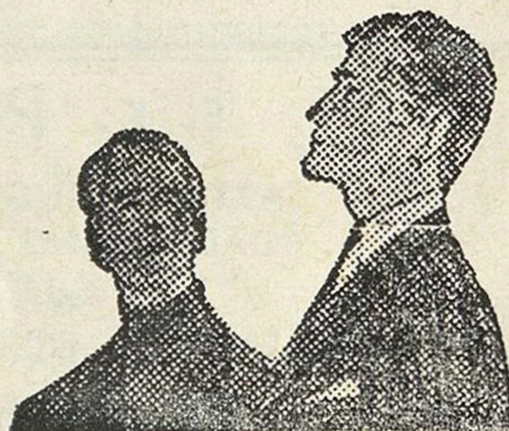
for men of today . . .

DAKS

clothes
from

WALTER MONCRIEFF

**87/89 SANDGATE ROAD
FOLKESTONE**



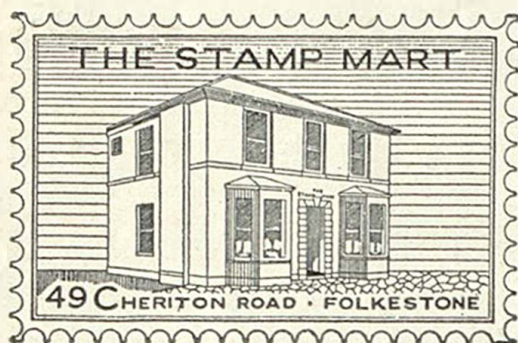
The Workbasket of **CHERITON PLACE** FOR PERSONAL SERVICE

KNITTING • CROCHET • TAPESTRIES

Jaeger and other leading makes

Call and see our wide selection of exquisite
COSTUME JEWELLERY

To find us — turn right outside the Theatre, first right
again, and cross Sandgate Road. Telephone: 52802



The Stamp Mart

49 Cheriton Road, Folkestone
Telephone 54508 **Kent**

DEALERS IN

ALL BRITISH COMMONWEALTH
& FOREIGN STAMPS, ALBUMS
& ACCESSORIES

Open each weekday except Wednesday

E. K. PLANT LTD.

EARTH MOVING PLANT AND CONTRACTORS
ROAD MAKING FARM IMPROVEMENTS

WORKS AND YARD
FORGE MEADOW
HAWKINGE

Telephone: Hawkinge 488/9

LEAS PAVILION

FOLKESTONE

Lessees - - The Arthur Brough Players Ltd.
Telephone 52466 Licensee and Manager: RONALD W. LANE
Director of Productions: LESLIE LAWTON

Monday, July 8th, and week

The ARTHUR BROUGH Players
present

SIGNPOST TO MURDER

by MONTE DOYLE

(by arrangement with EMILE LITTLER)

Cast in order of appearance:

Dr. Alan Forrest	JOHN HUGHES
Reg Cartwright	LESLIE LAWTON
Roy Collier	BERNARD FINCH
Austen	LOUIS CABOT
Sally Thomas	LINDA RENWICK
Inspector Bickford	ALEX LEPPARD
P.C. Jackson	BRIAN HONEYBALL

Directed by JENNY OULTON

Settings designed by
NEIL LITTLEWOOD

Lighting designed by
CHRIS DAY

Synopsis of Scenes

ACT ONE

- Scene 1 Dr. Forrest's office at Holbrook Asylum for the Criminal Insane. Late afternoon.
(During this scene lights fade to denote passage of two hours).
- Scene 2 Sally Thomas's cottage. The same night.
(During scene lights fade to denote passage of one hour)

ACT TWO

- Scene 1 The same. A few minutes later.
- Scene 2 The same. Fourteen days later. 8.0 p.m.

ACT THREE

The same. Fourteen days later. 11.45 p.m.
Time—the present

There will be two intervals of ten minutes

Our Next Production
Monday, July 15th, and week
BRENDA COWLING

in

“SAILOR, BEWARE!”

By PHILIP KING & FALKLAND CARY

Surely one of the funniest plays ever written, this comedy never fails to reduce an audience to helpless hysteria. Emma Hornett is everybody's idea of the murderous mother-in-law and watching her put her family through the hoops is doubly enjoyable, as there is the smug satisfaction of knowing it's not happening to you!

BRENDA COWLING (fast becoming one of Folkestone's favourite actresses) returns to the company to play Emma Hornett with PETER STREET as Henry, LINDA RENWICK as Edie and NADINE HANWELL as Shirley. ALEX LEPPARD is the unfortunate bridegroom, JENNY OULTON the bridesmaid, ALAN HALLEY the best man, MARTHA GIBSON the nosy neighbour and JOHN HUGHES the poor vicar who has to untangle the marital crisis. The play will be directed by LESLIE LAWTON who promises an evening packed with laughter.

COMING SOON:

Monday, July 22nd for TWO weeks
LESLIE LAWTON & JOHN HUGHES as
“THE ODD COUPLE”
in the fabulous hit comedy by
NEIL SIMON

Stage Director	SARAH FISHER
Resident Designer	NEIL LITTLEWOOD
Assistant Designer	MICAELA CORTEFEANU
Asst. Stage Managers	LOUIS CABOT MARTHA GIBSON BRIAN HONEYBALL
Lighting and Sound	CHRIS DAY

Furniture by Newman's and Counterpoint, Mr. Lawton's and Mr. Cabot's uniforms by The Royal Victoria Hospital, Bathroom, Sink and Washbasin by William Dunk Ltd., Records by Bobby's, Light fittings by Walter's. Tissues by Kleenex, Firearms by Bapty's Ltd., Telephones by G.P.O. Lighters by Ronson.

In the interest of the comfort of patrons we respectfully suggest that smoking should be restricted to the intervals

OCLEE

Jewellers

35 SANDGATE ROAD, FOLKESTONE

Tel: Folkestone 52654