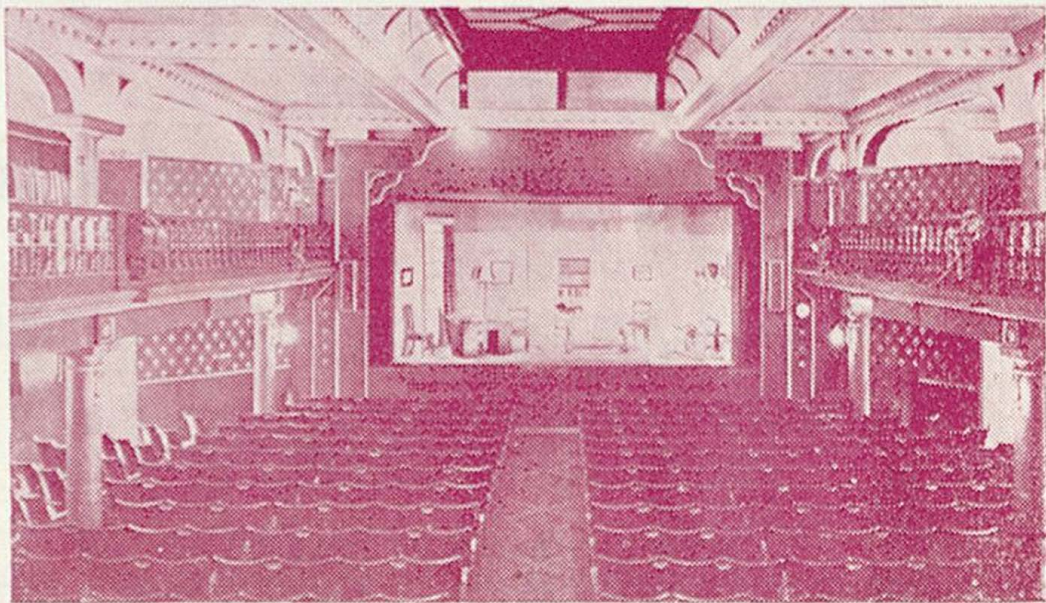


LEAS PAVILION

FOLKESTONE



PROGRAMME 6^D.

JOHN LUKEY & SONS, Ltd.

Established

Wine and Spirit Merchants

1853

- Lukey's Finest Dry Gin. 70% proof
- Pale Dry Sherry (Produce of Spain)
- Fine Old Golden Sherry (Produce of Spain)
- Try our popular $\frac{1}{2}$ gallon Pitchers of Table Wines
- We recommend our Elgin Scotch Whisky. 70% proof

101 SANDGATE ROAD, FOLKESTONE

TEL: FOLKESTONE 53169 (TWO LINES)

Also at Dover, Walmer, Hythe and Lyminge

The Workbasket **of Cheriton Place**

FOR PERSONAL SERVICE

JAEGER WOOLS AND OTHER LEADING MAKES

Call and see our wide selection of exquisite
COSTUME JEWELLERY

To find us — turn right outside the Theatre, first right again, and cross Sandgate Road. Telephone: 52802

GOOD FOOD

INTIMATE SURROUNDINGS

Highly recommended by Egon Ronay, the Good Food Guide,
Let's Halt Awhile, and many other publications

The Bay Tree Grill and Bar

at

THE BURLINGTON

400 yards from this Theatre

Late Meals: Weekdays 10 p.m. Saturdays 10.30 p.m

TELEPHONE 55301

LEAS PAVILION • FOLKESTONE

Licensee and Manager: John Cannan. Tel: 52466

The Arthur Brough Players Ltd.

in association with

THEATRE SOUTH EAST

present

PHOTO FINISH

The outstanding Play

by

PETER USTINOV

Directed by Bruce Bennett

Decor by Peter Fairchild

**Thursday, 2nd to
Wednesday, 8th April, 1970**

Nightly at 8.0

Matinees: Wednesday at 3.0 and Saturday at 5.0

PHOTO FINISH

BY PETER USTINOV

Sam Old	Bruce Bennett
Stella	Patricia Ivey
Sam at 60	Alan Mosby
Sam at 40	Bill Riley
Sam at 20	Ian Clegg
Clarice	Jill Meers
Ada Cooney	Jill Meers
Reginald Kinsale	Richard Burnett
Agnes Kinsale	Peggy Paige
Tommy	Ian Clegg
Alice Montego	Elsbeth Pirie

Directed by Bruce Bennett

Settings by Peter Fairchild

The play takes place in the study of Kinsale House in London

The action of the play is continuous—there will be two intervals

We gratefully acknowledge assistance given by:

Bobby and Company.
Walters of Folkestone.
Lindy Lou.
Newman and Sons, Hythe.
Leas Tobacco Company.
Trendan Fair.

For Theatre South East

General Manager and Director of Productions	Richard Burnett
Production Manager	David Blake
Publicity Manager	Douglas Addey
Company Stage Manager	Lee James
Technical Stage Manager	Anthony Medd
Assistant Stage Managers	Rachael Osborne and Phillida Welch

NEXT PRODUCTION—Thursday 9th to Wednesday 15th April

MARY, MARY

By Joan Kerr

Ladies and Gentlemen,

We hope very much that you will enjoy this production of what we consider a very fine play by Mr. Peter Ustinov.

Next week our mood changes completely, when we present a sparkling and modern comedy called "MARY, MARY" by Joan Kerr. It was in this play that the delightful Maggie Smith—now one of the stars of the National Theatre—made a very great hit in London. We are confident that you will find it a delightfully amusing and stimulating entertainment.

May we urge all of you who have not already joined our Playgoers' Club to do so as soon as possible.

Yours sincerely,

Richard Burnett
Peggy Paige

DURING THE INTERVALS

The Theatre Bar (fully licensed) at the rear of the Stalls is open from 7.30 before the performance and during the intervals. Orders taken for drinks before 8.0 will be ready for the intervals. The Coffee Bar is open during the intervals for the sale of coffee at evening performances and tea at matinees. Snacks are also available. Ice cream, chocolates and sweets can be purchased from the attendants in the auditorium.

LEAS PAVILION PLAYGOERS CLUB

The Leas Pavilion Playgoers' Club has been formed to build up a permanent and regular audience for dramatic presentations at the Leas Pavilion; to foster links between those taking part and those watching the productions; and to promote interest in the living theatre by the media of lectures, demonstrations, social and other activities.

Members' Privileges:

Season tickets at reduced prices for specific eight-week periods.

Priority booking facilities.

Advanced and full information of all presentations. Club meetings and various special activities.

Regular Newsheet of local and general theatrical interest.

Membership Subscription: 10s per year.

Enrolment Forms from: **Hon. Secretary, Playgoers' Club, Leas Pavilion, Folkestone.**

FORTHCOMING PRODUCTIONS

Thursday 9th April

The Hilarious Comedy by Jean Kerr, MARY, MARY

Thursday 16th April

George Batson's Outstanding Comedy-Thriller MURDER ON ARRIVAL

Thursday 23rd April

The Delightful Light Comedy by John Dighton, WHO GOES THERE?

Thursday 30th April

Oscar Wilde's Witty and Elegant Comedy LADY WINDERMERE'S FAN

Thursday 7th May

The brilliant play by Wynyard Browne A QUESTION OF FACT

BOOKING FACILITIES

The Box Office is open weekdays 10 a.m. to 7 p.m. (Tel.: 52466). Postal bookings will be dealt with in strict order of receipt provided remittance is enclosed. Telephone bookings are accepted during Box Office hours, but must be collected and paid for half-an-hour before commencement of the performance. Under no circumstances can they be held longer if other customers wish to purchase them.

BOOKING AGENTS

Swinards, 26 High Street, Hythe

Goulden and Wind, Cannon Street, Dover

Baldwin's Travel Agency, High Street, Ashford

The management reserve the right to refuse admission

The management reserve the right to make any alteration in the Cast which may be rendered necessary by unavoidable cause

Patrons are invited not to smoke during the action of the play

OCLEE

JEWELLERS

FINE DIAMONDS — OMEGA WATCHES
ANTIQUÉ AND MODERN SILVER

35 SANDGATE ROAD, FOLKESTONE

IF BLURRED **HEARING** MARS YOUR PLEASURE...

YOU CAN TEST WITHOUT OBLIGATION
25 CORRECTORS OF THE 8 BEST MAKES

C. E. GROOM

M.S.H.A.A., Qualified Hearing Aid Consultant

168 SANDGATE ROAD, Nr. SANDGATE HILL

Tel. Folkestone 54416

**For Advertising Space in
this Programme**

Apply to
THE MANAGER
LEAS PAVILION THEATRE

for men of today . . .



DAKS clothes
from

WALTER MONCRIEFF

87/89 SANDGATE ROAD
FOLKESTONE

CONSULT US FOR ALL YOUR BUILDING WORK

WILLIAM **DUNK** LIMITED
45/47 TONTINE STREET, FOLKESTONE

Telephone: FOLKESTONE 51651

DECORATIONS — REPAIRS — CENTRAL HEATING

For a full guide to your . . .

HOLIDAY ENTERTAINMENT

read the . . .

Folkestone & Hythe

GAZETTE

Wednesdays

Folkestone, Hythe & District

HERALD

Saturdays

YOUR TWO LOCAL LIVELY NEWSPAPERS

NOTICE TO PATRONS

We will be pleased to welcome your suggestions concerning your comfort and entertainment in this theatre. Please contact our Manager, Mr. John Cannan.