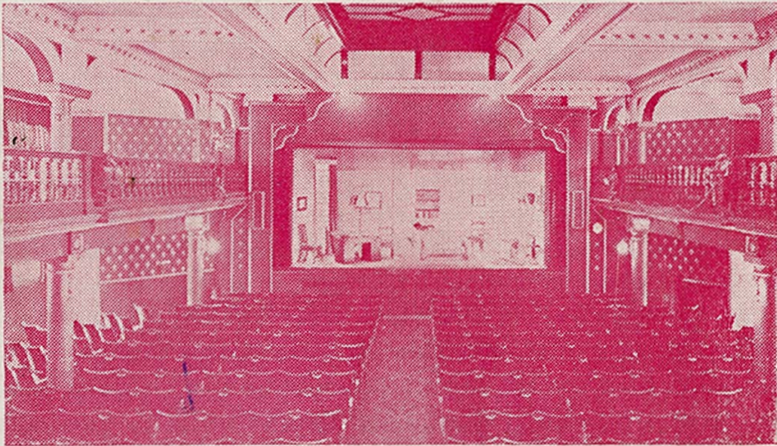


LEAS PAVILION

FOLKESTONE



PROGRAMME 6^D.

JOHN LUKEY & SONS, Ltd.

Established

Wine and Spirit Merchants

1853

- Lukey's Finest Dry Gin. 70% proof
- Pale Dry Sherry (Produce of Spain)
- Fine Old Golden Sherry (Produce of Spain)
- Try our popular $\frac{1}{2}$ gallon Pitchers of Table Wines
- We recommend our Elgin Scotch Whisky. 70% proof

101 SANDGATE ROAD, FOLKESTONE

TEL: FOLKESTONE 53169 (TWO LINES)

Also at Dover, Walmer, Hythe and Lyminge

The Workbasket **of Cheriton Place**

FOR PERSONAL SERVICE

IAEGER WOOLS AND OTHER LEADING MAKES

Call and see our wide selection of exquisite
COSTUME JEWELLERY

To find us — turn right outside the Theatre, first right again, and cross Sandgate Road. Telephone: 52802

GOOD FOOD

INTIMATE SURROUNDINGS

Highly recommended by Egon Ronay, the Good Food Guide,
Let's Halt Awhile, and many other publications

The Bay Tree Grill and Bar

at

THE BURLINGTON

400 yards from this Theatre

Late Meals: Weekdays 10 p.m. Saturdays 10.30 p.m

TELEPHONE 55301

LEAS PAVILION · FOLKESTONE

Licensee and Manager: John Cannan. Tel: 52466

What Makes a Play?—2

The production team is an integral part of any theatrical company and ensures the smooth running of rehearsals and performance. Before rehearsals start the set has to be designed and the style of the production formulated. Furniture and properties have to be made, bought, borrowed or begged and attention to detail is essential. Lighting and sound have to be considered and at least one member of stage management is on hand during rehearsals and performances to set furniture and props., prompt the actors and cue the various effects. The entire operation is directed by the producer and put into action by the key man—the stage manager. At the first rehearsal the stage manager and his staff list the properties, furniture, costumes, wigs and special effects required, and assemble them before dress rehearsal. Authors and producers often make impossible demands and a good stage manager readily accepts the challenge! Whilst the actors are rehearsing, stage management order costumes and wigs, go into the town to find furniture and properties and the designer is busy in the workshop painting the set. Within seconds of the final curtain on the last night of a play, stage management 'strike' the set and prepare furniture and properties for storage or return to the people who have loaned them. It is almost certain that the set is dismantled before the audience arrive home—quite a lot has been done before you actually leave the theatre! Then the set for the next play is built and this work goes on into the early hours. After a few hours sleep the production team is back at the theatre to complete, dress and light the production. Light fittings have to be wired and fitted, curtains hung and all the furniture polished. The properties are set, the sound finalised and then a final clean-up before the dress rehearsal. There is no time for the team to stop for a meal on production day and coffee and sandwiches are hungrily devoured on stage during a snatched break. Dress rehearsal can be a long and tense drawn-out affair with last minute changes until eventually the production is ready for the first night audience—even though the sound of a hammer may seep through the curtain as the audience arrives! The duties of the stage-management team are endless. There is coffee to be made, the stage to be swept and the production to be kept in good order. A good stage management never panics and every item is set on stage according to a pre-conceived plan. Hand in hand with preparations for the forthcoming play, properties, furniture, wigs, costumes and scripts for the last play have to be returned. I am sure our stage manager, Lee James, and his staff would wish me to take this opportunity of thanking all the people who so kindly loan items and in doing so make our productions possible. In turn I would like to thank our production team which is so dedicated and takes a pride in each production. Stage Management at Folkestone is one of the best I have known.

TONY CLAYTON.

THURSDAY 16TH
TO
WEDNESDAY 22ND
JULY

DON'T TELL FATHER

NIGHTLY AT 8.0
MATINEES:
WEDNESDAY AT 3.0
SATURDAY AT 5.0

by HAROLD BROOKE AND KAY BANNERMAN

Miss Yardley	Patricia Ivey
General Barclay	Dennis Tynsley
Sir Matthew Carr	Derek Wright
Tansy Carr	Elsbeth Pirie
Thomas Barclay	Paul Ratcliffe
Cornelius Allingham	Ian Clegg

Directed by Tony Clayton

Scenery painted by Brian Bartle

The action of the play takes place in the offices of
the Carr Investment Trust in the City of London

ACT 1

An afternoon in May

ACT 2

The following morning

ACT 3

Three weeks later

Time—The Present

We gratefully acknowledge assistance given by:

Bobby and Company.	Leas Tobacco Company.
Walters of Folkestone.	Trendan Fair.
Lindy Lou.	General Post Office.
Newman and Sons, Hythe.	Royal Victoria Hospital, Folkestone.
Cigarettes by the House of Piccadilly.	Lighters by Ronson.

For Theatre South East

General Manager and Director of Productions	Richard Burnett
Publicity Manager	Douglas Addey
Company Stage Manager	Lee James
Technical Stage Manager	Anthony Medd
Deputy Stage Manager	Rachel Osborne
Student Stage Managers	Phillida Welch, John Blackman

Ladies and Gentlemen,

Commencing next Thursday we are presenting the outstanding thriller "PORTRAIT OF MURDER", which enjoyed a long and successful run at the Savoy and Vaudeville Theatres in London.

The play opens with the return to her home of a successful writer who has been badly injured in an accident which, unbeknown to her, has been contrived by her husband and his mistress in an attempt to murder her. Her character, however, has now completely changed—whereas before the accident she had been capricious and malevolent, she is now docile and charming. The action of this production swings between the past and the present so that we see the lady as she is and as she was—the suspense builds up relentlessly to a denouement that is both stunning and completely unexpected.

DURING THE INTERVALS

The Theatre Bar (fully licensed) at the rear of the Stalls is open from 7.30 before the performance and during the intervals. Orders taken for drinks before 8.0 will be ready for the intervals. The Coffee Bar is open during the intervals for the sale of coffee at evening performances and tea at matinees. Snacks are also available. Ice cream, chocolates and sweets can be purchased from the attendants in the auditorium.

LEAS PAVILION PLAYGOERS CLUB

The Leas Pavilion Playgoers' Club has been formed to build up a permanent and regular audience for dramatic presentations at the Leas Pavilion; to foster links between those taking part and those watching the productions; and to promote interest in the living theatre by the media of lectures, demonstrations, social and other activities.

Members' Privileges:

Season tickets at reduced prices for specific eight-week periods.

Priority booking facilities.

Advanced and full information of all presentations. Club meetings and various special activities.

Regular Newsheet of local and general theatrical interest.

Membership Subscription: 10s per year.

Enrolment Forms from: Hon. Secretary, Playgoers' Club, Leas Pavilion Folkestone.

FORTHCOMING PRODUCTIONS

Thursday 23rd July

The Fine Mystery play by Robert Bloomfield **PORTRAIT OF MURDER**

Thursday 30th July

A Riotous Comedy by Arthur Lovegrove **GOODNIGHT, Mrs. PUFFIN**

Thursday 6th August

The Outstanding Thriller by Agatha Christie **MURDER AT THE VICARAGE**

BOOKING FACILITIES

The Box Office is open weekdays 10 a.m. to 7 p.m. (Tel.: 52466). Postal bookings will be dealt with in strict order of receipt provided remittance is enclosed. Telephone bookings are accepted during Box Office hours, but must be collected and paid for half-an-hour before commencement of the performance. Under no circumstances can they be held longer if other customers wish to purchase them.

BOOKING AGENTS

Swinards, 26 High Street, Hythe

Goulden and Wind, Cannon Street, Dover

Baldwin's Travel Agency, High Street, Ashford

The management reserve the right to refuse admission

The management reserve the right to make any alteration in the Cast which may be rendered necessary by unavoidable cause

Patrons are invited not to smoke during the action of the play

BRIAN HEWETT

Master Decorator

63 SOMERSET ROAD · FOLKESTONE 76693

Member of the National Federation of Master Painters and Decorators

OCLEE

JEWELLERS

FINE DIAMONDS — OMEGA WATCHES
ANTIQUE AND MODERN SILVER

35 SANDGATE ROAD, FOLKESTONE

IF BLURRED HEARING MARS YOUR PLEASURE...

YOU CAN TEST WITHOUT OBLIGATION
25 CORRECTORS OF THE 8 BEST MAKES

C. E. GROOM

M.S.H.A.A., Qualified Hearing Aid Consultant

168 SANDGATE ROAD, Nr. SANDGATE HILL

Tel. Folkestone 54416

**For Advertising Space in
this Programme**

Apply to
**THE MANAGER
LEAS PAVILION THEATRE**

for men of today . . .



DAKS clothes
from

WALTER MONCRIEFF

**87/89 SANDGATE ROAD
FOLKESTONE**

CONSULT US FOR ALL YOUR BUILDING WORK

WILLIAM **DUNK** LIMITED
45/47 TONTINE STREET, FOLKESTONE

Telephone: FOLKESTONE 51651

DECORATIONS — REPAIRS — CENTRAL HEATING

For a full guide to your . . .

HOLIDAY ENTERTAINMENT

read the . . .

Folkestone & Hythe

GAZETTE

Wednesdays

Folkestone, Hythe & District

HERALD

Saturdays

YOUR TWO LOCAL LIVELY NEWSPAPERS

NOTICE TO PATRONS

We will be pleased to welcome your suggestions concerning your comfort and entertainment in this theatre. Please contact our Manager, Mr. John Cannan.