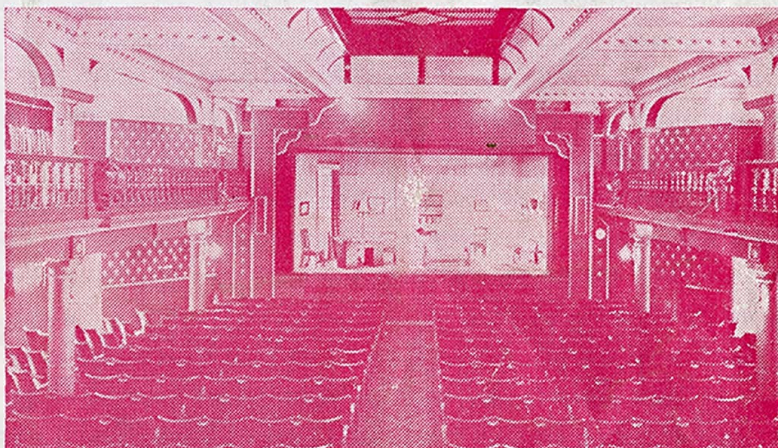


# LEAS PAVILION

FOLKESTONE



PROGRAMME 6<sup>D</sup>.

# JOHN LUKEY & SONS, Ltd.

Established

Wine and Spirit Merchants

1853

- Lukey's Finest Dry Gin. 70% proof
- Pale Dry Sherry (Produce of Spain)
- Fine Old Golden Sherry (Produce of Spain)
- Try our popular  $\frac{1}{2}$  gallon Pitchers of Table Wines
- We recommend our Elgin Scotch Whisky. 70% proof

**101 SANDGATE ROAD, FOLKESTONE**

TEL: FOLKESTONE 53169 (TWO LINES)

Also at Dover, Walmer, Hythe and Lyminge

## *The Workbasket* of Cheriton Place

FOR PERSONAL SERVICE

**JAEGER WOOLS AND OTHER LEADING MAKES**

Call and see our wide selection of exquisite  
**COSTUME JEWELLERY**

---

To find us — turn right outside the Theatre, first right again, and cross Sandgate Road. Telephone: 52802

**GOOD FOOD**

**INTIMATE SURROUNDINGS**

Highly recommended by Egon Ronay, the Good Food Guide,  
Let's Halt Awhile, and many other publications

## *The Bay Tree Grill and Bar*

at

# **THE BURLINGTON**

400 yards from this Theatre

Late Meals: Weekdays 10 p.m. Saturdays 10.30 p.m

TELEPHONE 55301

# LEAS PAVILION · FOLKESTONE

Licensee and Manager: John Cannan. Tel: 52466

---

## *What Makes a Play?—4*

The audience is as important in the making of a play as the producer, the leading man or the designer. Without an audience our work is worthless. After a week's rehearsal culminating in a hectic full-dress rehearsal we feel drained, exhausted and at times dispirited. The doors open, the audience begins to arrive and the theatre with everybody in it (backstage and front of house) becomes alive. You are not merely witnesses but participants in a dramatic experience. If the invisible but vital contact between the actor and his audience is missing, the production has failed. No doubt you frequently praise or criticise an actor, a play or a production. I wonder if you realise you are discussed backstage and accordingly praised or criticised? You may be praised for your attention, your quick reaction or your intelligent appreciation of a play. You may be criticised for arriving late, chattering in such a way as to destroy an actor's concentration or simply rattling a chocolate box at a crucial point in the action. It has even been known for a member of an audience to attempt to carry out a *soto voce* conversation with an actor on stage during a performance! The true professional admires and respects his audience and cares about the reaction to his work. I care so much that I frequently hover in the bar eavesdropping to collect unsolicited opinions during the interval. It can be gratifying but it can also be extremely humiliating! The company is delighted to receive letters of praise from satisfied patrons and such letters are displayed prominently on the backstage notice board. I, personally, would love to receive letters telling us what you dislike about our work because you can't all be satisfied all the time! Whilst we value greatly the patronage of our older audience, it is exciting to see the number of young people who support us because if the theatre is to continue to thrive we must attract young people to provide an audience for the future. You can do our company and the theatre in general a great service by telling people if you enjoy a production. If you don't—tell me—I look forward to hearing from you.

TONY CLAYTON

---

THURSDAY 30TH JULY  
TO WEDNESDAY  
5TH AUGUST

# Goodnight, Mrs. Puffin

by ARTHUR LOVEGROVE

NIGHTLY AT 8.0  
MATINEES:  
WEDNESDAY AT 3.0  
SATURDAY AT 5.0

Ethel Fordyce ... ..	Patricia Ivey
Jacqueline Fordyce ... ..	Jill Meers
Pamela Fordyce ... ..	Elsbeth Pirie
Nicholas Fordyce ... ..	Ian Clegg
Annie ... ..	Rachel Osborne
Mrs. Puffin ... ..	Peggy Paige
Henry Fordyce ... ..	Derek Wright
Stephen Parker ... ..	Richard Burnett
Victor Parker ... ..	Jonathan Prince
Roger Vincent ... ..	Paul Ratcliffe

Directed by Tony Clayton

Scenery painted by Brian Bartle

The action of the play passes in the drawing-room of the Fordyce family at their home in Hampstead, a week before Christmas

ACT 1

About 4 p.m.

ACT 2

Later that evening

ACT 3

An evening three days later

During this act the lights will be lowered to denote the passing of an hour

We gratefully acknowledge assistance given by:

Bobby and Company.	Leas Tobacco Company.	Walters of Folkestone.
Trendan Fair.	Lindy Lou.	General Post Office.
Newman and Sons, Hythe.	Royal Victoria Hospital, Folkestone.	
Lighters by Ronson.	Cigarettes by the House of Piccadilly.	Currys Ltd.

## For Theatre South East

General Manager and Director of Productions .. ..	Richard Burnett
Publicity Manager .. ..	Douglas Addey
Company Stage Manager .. ..	Lee James
Technical Stage Manager .. ..	Anthony Medd
Deputy Stage Manager .. ..	Rachel Osborne
Student Stage Managers .. ..	Phillida Welch, John Blackman

Ladies and Gentlemen,

Next Thursday we are presenting one of the most famous of the Agatha Christie thrillers, "MURDER AT THE VICARAGE". The plot concerns a Colonel who is found murdered at the Vicarage whilst waiting for an appointment with the Vicar. As usual in Miss Christie's plays, almost everyone has a motive for wishing the victim dead and the atmosphere of tension which she knows how to create so well is built up by a bogus telephone call and anonymous letters. The most important figure in this net of intrigue is "Miss Marple"—a middle-aged spinster living close to the Vicarage, an ardent gardener who has a habit of being in her garden at the very moment when most persons wish they were unseen, and she is able to disprove most of the alibis, proving how true it is that "the onlooker sees most of the game".

To all of our patrons who enjoy a first-class thriller, this production will ensure an excellent evening's entertainment.

## DURING THE INTERVALS

The Theatre Bar (fully licensed) at the rear of the Stalls is open from 7.30 before the performance and during the intervals. Orders taken for drinks before 8.0 will be ready for the intervals. The Coffee Bar is open during the intervals for the sale of coffee at evening performances and tea at matinees. Snacks are also available. Ice cream, chocolates and sweets can be purchased from the attendants in the auditorium.

## LEAS PAVILION PLAYGOERS CLUB

The Leas Pavilion Playgoers' Club has been formed to build up a permanent and regular audience for dramatic presentations at the Leas Pavilion; to foster links between those taking part and those watching the productions; and to promote interest in the living theatre by the media of lectures, demonstrations, social and other activities.

### Members' Privileges:

Season tickets at reduced prices for specific eight-week periods.

Priority booking facilities.

Advanced and full information of all presentations. Club meetings and various special activities.

Regular Newsheet of local and general theatrical interest.

Membership Subscription: 10s per year.

Enrolment Forms from: Hon. Secretary, Playgoers' Club, Leas Pavilion Folkestone.

## FORTHCOMING PRODUCTIONS

Thursday 6th August

The Outstanding Thriller by Agatha Christie **MURDER AT THE VICARAGE**

Thursday 13th August

The Successful Comedy by John Chapman **THE BRIDES OF MARCH**

Thursday 20th August

The Comedy-Thriller Hit by John Willard **THE CAT AND THE CANARY**

---

### BOOKING FACILITIES

The Box Office is open weekdays 10 a.m. to 7 p.m. (Tel.: 52466). Postal bookings will be dealt with in strict order of receipt provided remittance is enclosed. Telephone bookings are accepted during Box Office hours, but must be collected and paid for half-an-hour before commencement of the performance. Under no circumstances can they be held longer if other customers wish to purchase them.

---

### BOOKING AGENTS

Swinards, 26 High Street, Hythe  
Goulden and Wind, Cannon Street, Dover  
Baldwin's Travel Agency, High Street, Ashford

---

The management reserve the right to refuse admission  
The management reserve the right to make any alteration in the Cast which may be rendered necessary by unavoidable cause

---

Patrons are invited not to smoke during the action of the play

**BRIAN HEWETT**

---

*Master Decorator*

---

**63 SOMERSET ROAD · FOLKESTONE 76693**

Member of the National Federation of Master Painters and Decorators

# OCLEE

JEWELLERS

FINE DIAMONDS — OMEGA WATCHES  
ANTIQUE AND MODERN SILVER

35 SANDGATE ROAD, FOLKESTONE

IF BLURRED **HEARING** MARS YOUR PLEASURE . . .

YOU CAN TEST WITHOUT OBLIGATION  
25 CORRECTORS OF THE 8 BEST MAKES

**C. E. GROOM**

M.S.H.A.A., Qualified Hearing Aid Consultant

168 SANDGATE ROAD, Nr. SANDGATE HILL

Tel. Folkestone 54416

**For Advertising Space in  
this Programme**

Apply to  
**THE MANAGER  
LEAS PAVILION THEATRE**

*for men of today . . .*



**DAKS** clothes  
from

**WALTER MONCRIEFF**

87/89 SANDGATE ROAD  
FOLKESTONE

CONSULT US FOR ALL YOUR BUILDING WORK

WILLIAM DUNK LIMITED  
45/47 TONTINE STREET, FOLKESTONE

Telephone: FOLKESTONE 51651

DECORATIONS — REPAIRS — CENTRAL HEATING

*For a full guide to your . . .*

HOLIDAY ENTERTAINMENT

*read the . . .*

**Folkestone & Hythe**

**GAZETTE**

**Wednesdays**

**Folkestone, Hythe & District**

**HERALD**

**Saturdays**

**YOUR TWO LOCAL LIVELY NEWSPAPERS**

**NOTICE TO PATRONS**

**We will be pleased to welcome your suggestions concerning your comfort and entertainment in this theatre. Please contact our Manager, Mr. John Cannan.**