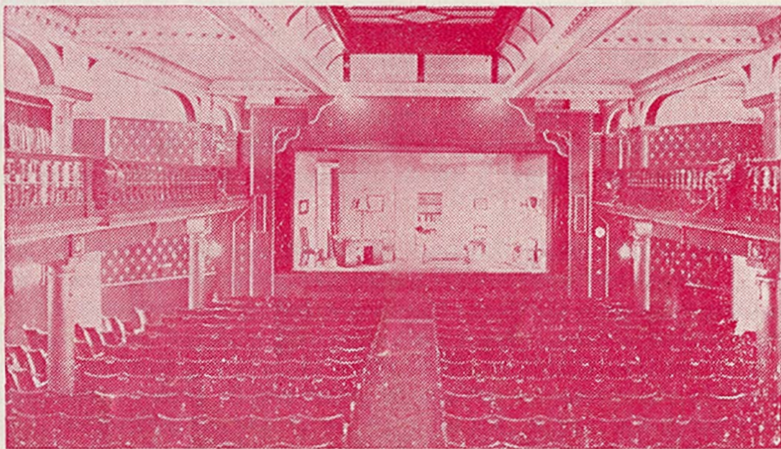


LEAS PAVILION

FOLKESTONE



PROGRAMME 6^D.

JOHN LUKEY & SONS, Ltd.

Established

Wine and Spirit Merchants

1853

- Lukey's Finest Dry Gin. 70% proof
- Pale Dry Sherry (Produce of Spain)
- Fine Old Golden Sherry (Produce of Spain)
- Try our popular $\frac{1}{2}$ gallon Pitchers of Table Wines
- We recommend our Elgin Scotch Whisky. 70% proof

101 SANDGATE ROAD, FOLKESTONE

TEL: FOLKESTONE 53169 (TWO LINES)

Also at Dover, Walmer, Hythe and Lyminge

The Workbasket of Cheriton Place

FOR PERSONAL SERVICE

JAEGER WOOLS AND OTHER LEADING MAKES

Call and see our wide selection of exquisite
COSTUME JEWELLERY

To find us — turn right outside the Theatre, first right again, and cross Sandgate Road. Telephone: 52802

GOOD FOOD

INTIMATE SURROUNDINGS

Highly recommended by Egon Ronay, the Good Food Guide,
Let's Halt Awhile, and many other publications

The Bay Tree Grill and Bar

at

THE BURLINGTON

400 yards from this Theatre

Late Meals: Weekdays 10 p.m. Saturdays 10.30 p.m

TELEPHONE 55301

LEAS PAVILION · FOLKESTONE

Licensee and Manager: John Cannan. Tel: 52466

Ladies and Gentlemen,

With this production of "Book of the Month"—which we hope you will thoroughly enjoy—we come to the end of the first year of Theatre South East productions in the Leas Pavilion. We should like to express our sincere gratitude to all of you who have given us your support, and particularly, of course, to those of you who have been able to do so throughout the season. Many of you have been kind enough to write and say how much you have appreciated the high standard maintained by the talented members of our company, and on behalf of the Directors of the theatre I should like to say how much we too have appreciated the hard work they have put in and the splendid results they have achieved. We hope very much that we shall have many of them back with us next year and in subsequent years.

I should like also to express our thanks to all the members of the staff, both backstage and front-of-house, whose sterling efforts and cheerful co-operation have added so much to the success of the season. They have all done a really splendid job, and I am sure none of them will resent my conveying our special thanks to Mr. John Cannan who in his first year as theatre manager has been a tower of strength, carrying out what can be a trying task with efficiency, tact and great good humour.

As most of you will know from the national press, these are far from easy days for the provincial theatre. The competition from television is intense, and combined with the decrease in the amount of spending money available, especially in towns of this type, has brought about a situation where only a very few provincial theatres can keep going at all without heavy subsidies from local authorities or the Arts Council. And all the time, of course, expenses are rising rapidly and relentlessly. Nevertheless we hope very much, when we have reviewed the situation, to be able to decide to open again next Easter for another long season until the end of October.

One thing, I must admit, which would have made it easier for us to come to this decision would have been if the support we received during the early and late months of this year had been more in relation to the splendidly full houses we had during the real "holiday" season, when we smashed all records for the theatre on at least three occasions. Naturally we appreciate that we must expect less support when the holiday visitors are not here. But all the same, to play such plays as "The Heiress" and "A Question of Fact" in a town of this size to a bare sprinkling of patrons is heartbreaking at the time, and more than disappointing even in retrospect.

In writing this in our programme at the end of October I am no doubt preaching to the converted, for your very presence here will in most cases vouch for you as most regular supporters, whose goodwill we greatly value. But may I still impress on you, and ask you to impress on all your friends, our vital need for the maximum support during the early and late months of the season next year—and all subsequent years!

(continued on page 3)

THURSDAY 29th
TO SATURDAY
31st OCTOBER

Book of the Month

NIGHTLY AT 8.0
MATINEE:
SATURDAY AT 3.0

BY BASIL THOMAS

Edward Halliday	Roy Purcell
Joanna Halliday	Peggy Paige
Marcia Wentworth	Thelma Rogers
Betty Halliday	Elsbeth Pirie
Doris	Jill Meers
Col. Howard Barnes-Bradley	Richard Burnett
Doctor Ian MacLure	Jonathan Prince
Nicholas Barnes-Bradley	Ian Clegg

Directed by Richard Burnett
Scenery painted by Brian Bartle

The action of the play passes in the lounge hall of Edward Halliday's house near Cheltenham

ACT 1

- Scene 1. A Sunday morning in August
Scene 2. "Bare Bosom'd Night" by Betty Halliday

ACT 2

- Scene 1. Later the same Sunday morning
Scene 2. The following Monday evening

We gratefully acknowledge assistance given by:

Bobby and Company.	Leas Tobacco Company.	Walters of Folkestone.
Trendan Fair.	Lindy Lou.	General Post Office.
Newman and Sons, Hythe.	Royal Victoria Hospital, Folkestone.	
Lighters by Ronson.	Cigarettes by the House of Piccadilly.	Currys Ltd.

For Theatre South East

General Manager and Director of Productions	Richard Burnett
Publicity Manager	Douglas Addey
Company Stage Manager	Ian Drake
Technical Stage Manager	Anthony Medd
Assistant Stage Managers	Phillida Welch
	Rennie Tasker
Student Stage Manager	John Blackman

(Letter continued from page 1)

Before closing I want to tell you that we have gone very carefully and thoroughly into the possibility of reopening the theatre over the Christmas period, and presenting an attraction that would add to the gaiety of the town at that time. Unfortunately it has just not been possible for us to settle on any way of doing this with even a slender chance of recovering the expenses involved in planning, rehearsing and presenting a special show, and organising a staff front-of-house and back stage and so on. So for this year at least we have had to let the project rest.

In spite of which, while we again thank you for your support, and tell you how much we shall look forward to being back with you next year, may we also be among the first to wish you all a very happy Christmas and a prosperous and peaceful New Year.

On behalf of all the Directors of Arthur Brough Players Limited,

Yours sincerely,

Richard Burnett.

DURING THE INTERVALS

The Theatre Bar (fully licensed) at the rear of the Stalls is open from 7.30 before the performance and during the intervals. Orders taken for drinks before 8.0 will be ready for the intervals. The Coffee Bar is open during the intervals for the sale of coffee at evening performances and tea at matinees. Snacks are also available. Ice cream, chocolates and sweets can be purchased from the attendants in the auditorium.

LEAS PAVILION PLAYGOERS CLUB

The Leas Pavilion Playgoers' Club has been formed to build up a permanent and regular audience for dramatic presentations at the Leas Pavilion; to foster links between those taking part and those watching the productions; and to promote interest in the living theatre by the media of lectures, demonstrations, social and other activities.

Members' Privileges:

Season tickets at reduced prices for specific eight-week periods.

Priority booking facilities.

Advanced and full information of all presentations. Club meetings and various special activities.

Regular Newsheet of local and general theatrical interest.

Membership Subscription: 10s per year.

Enrolment Forms from: Hon. Secretary, Playgoers' Club, Leas Pavilion Folkestone.

PLAYGOERS CLUB OUTING

Thursday, November 19

The Leas Pavilion Playgoers Club is visiting the De La Warr Pavilion, Bexhill-on-Sea, on Thursday, November 19, for a matinee performance of Joyce Rayburn's new comedy "THE MAN MOST LIKELY TO . . ."

Coaches will depart at approx. 1 p.m. and return at approx. 7.30. Tickets including Coach Fare, Theatre Seat, and Tea are available from the Theatre Manager, John Cannan, at 20/-.

BOOKING FACILITIES

The Box Office is open weekdays 10 a.m. to 7 p.m. (Tel.: 52466). Postal bookings will be dealt with in strict order of receipt provided remittance is enclosed. Telephone bookings are accepted during Box Office hours, but must be collected and paid for half-an-hour before commencement of the performance. Under no circumstances can they be held longer if other customers wish to purchase them.

BOOKING AGENTS

Swinards, 26 High Street, Hythe
Goulden and Wind, Cannon Street, Dover
Baldwin's Travel Agency, High Street, Ashford

The management reserve the right to refuse admission
The management reserve the right to make any alteration in the Cast which may be rendered necessary by unavoidable cause

Patrons are invited not to smoke during the action of the play

BRIAN HEWETT

Master Decorator

63 SOMERSET ROAD · FOLKESTONE 76693

Member of the National Federation of Master Painters and Decorators

OCLEE

JEWELLERS

FINE DIAMONDS — OMEGA WATCHES
ANTIQUE AND MODERN SILVER

35 SANDGATE ROAD, FOLKESTONE

IF BLURRED **HEARING** MARS YOUR PLEASURE...

YOU CAN TEST WITHOUT OBLIGATION
25 CORRECTORS OF THE 8 BEST MAKES

C. E. GROOM

M.S.H.A.A., Qualified Hearing Aid Consultant

168 SANDGATE ROAD, Nr. SANDGATE HILL

Tel. Folkestone 54416

For Advertising Space in
this Programme

Apply to
THE MANAGER
LEAS PAVILION THEATRE

for men of today . . .



DAKS clothes
from

WALTER MONCRIEFF

87/89 SANDGATE ROAD

FOLKESTONE

CONSULT US FOR ALL YOUR BUILDING WORK

WILLIAM **DUNK** LIMITED
45/47 TONTINE STREET, FOLKESTONE

Telephone: FOLKESTONE 51651

DECORATIONS — REPAIRS — CENTRAL HEATING

For a full guide to your . . .

HOLIDAY ENTERTAINMENT

read the . . .

Folkestone & Hythe

GAZETTE

Wednesdays

Folkestone, Hythe & District

HERALD

Saturdays

YOUR TWO LOCAL LIVELY NEWSPAPERS

NOTICE TO PATRONS

We will be pleased to welcome your suggestions concerning your comfort and entertainment in this theatre. Please contact our Manager, Mr. John Cannan.