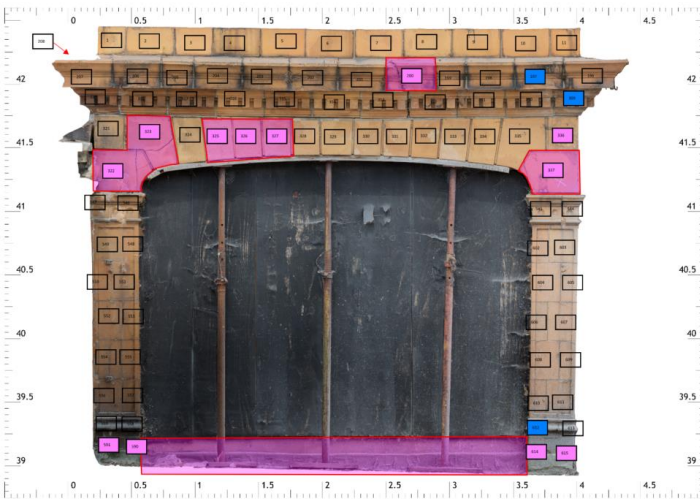


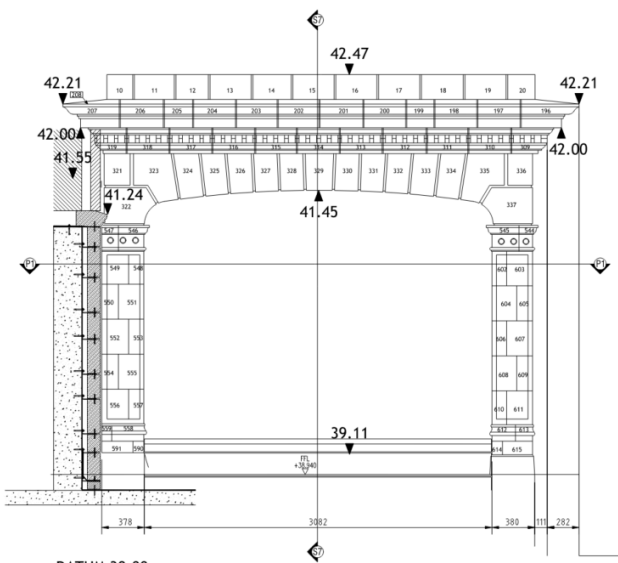
Restoration have undertaken a survey of the existing façade and produced a photographic record to scale, these were then converted into a document allowing us to detail new replacement terracotta units.



Orthographic elevation of existing



Orthographic elevation with replacement units marked up



Orthographic elevation converted to line drawing and rectified to enable accurate rebuild in the corrected position to levels and plumb

DATUM 38.00
ELEVATION N2

Following identity of the replacement units these were detailed in situ to ensure accuracy of replacements.



From these site details manufacture commenced. In some instances details cannot be taken and the units were sent to the manufacturer to produce maquettes for copying.

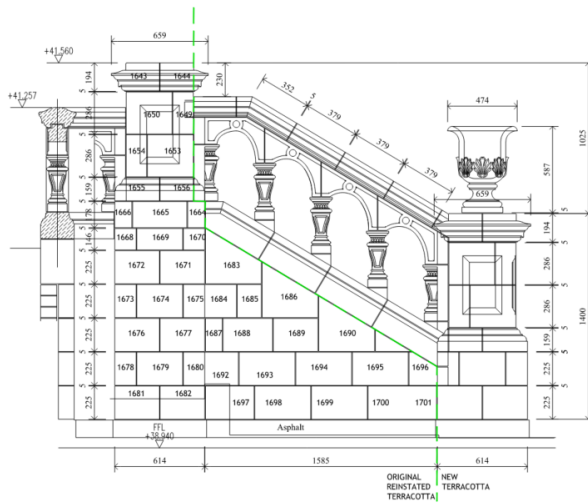


All units were numbered as per the elevatiun drawings and photographed before packing into numbered crates and securing storing in an off site covered facility.





Where there were no details to copy due to elements missing being like the urns that sit on the piers, drawings were produced and plaster moulds made to which embellishments were added to ensure the scale of the new items were correct.



DATUM 38.00
ELEVATION E3

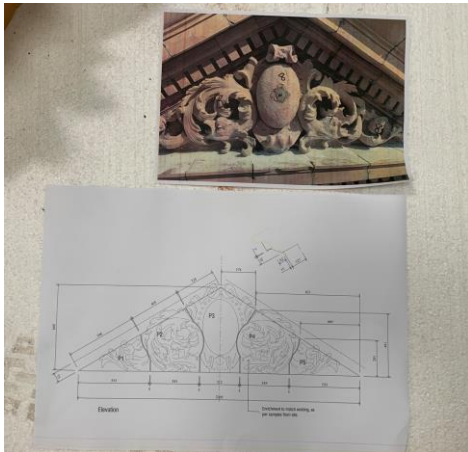


Once drawings, samples and benchmarks were approved the moulds for the units were produced in plaster



The clay is then pressed into the moulds ensuring the walls of the units are approx. 25mm thick and allowed to air dry slowly before removal and placing in the drying shed for 1 week

Following sufficient air drying the units are placed into the kiln for firing. On completion of the firing process the units are removed and checked against full sized drawings to ensure the shrinking of the clay is within tolerance before being packed into crates.









LPF-45

LPF-45
TOP piece

LPF-45

LPF-45



LPF-53

LPF-01

LPF-02

LPF-01

LPF-01

LPF-01

LPF-01



LPT-52

LPT-52

LPT-54

LPT-54

Копировать

47-8

LPT-53

13100







LPT-63

#3

LPT 63





Reception

ACT

2 Fire assembly point